



# Leggett & James

The Vale of Evesham Property Experts



## 11 St. Pauls Close

, Evesham, WR11 2EY

Asking Price £310,000



\*\*\*EXTENDED FOUR BEDROOM FAMILY HOME LOCATED WITHIN A POPULAR CUL DE SAC\*\*\*

This extended four bedroom family home is located within a cul de sac on the ever popular 'charity crescent' development, close by to great amenities and transport links.

The property boasts four bedrooms, generous & flexible ground floor reception space and a well kept enclosed rear garden. The property would make a perfect family home.



### The Property

Upon arrival at the property you can appreciate the position within a popular cul de sac and will find off road parking for two vehicles to the front.

The spacious ground floor comprises: entrance hall, living room, kitchen, dining area, family room, ground floor WC.

The first floor comprises: first floor landing, four well proportioned bedrooms and the family bathroom.

The property further benefits from gas central heating and double glazing throughout.

Tenure - Freehold  
Council Tax Band - C

### Entrance Hall

The welcoming entrance hall makes a great first impression for the home. The entrance hall has a door opening into the living room, panel radiator and stairs rising to the first floor.

### Living Room 14'11 x 11'6 (4.55m x 3.51m)

The spacious living room is the ideal place to relax and unwind. The room has a double glazed window to the front aspect and panel radiator.

### Kitchen 10'1 x 7'2 (3.07m x 2.18m)

The modern kitchen is open to the dining area and family room, ideal for those that like to entertain, the room has a double glazed window to the rear aspect. The kitchen has a range of wall & base units, sink with drainer and space for a washing machine, tumble dryer, dishwasher and oven.

### Dining Area 10'2 x 7'5 (3.10m x 2.26m)

The dining area is open to the kitchen and family room, ideal for those that like to entertain. The room has a double glazed window and door to the rear aspect, opening into the garden, two panel radiators, useful storage cupboard (under the stairs) and space for an 'American' style fridge freezer.

### Family Room 12'2 x 7'8 (3.71m x 2.34m)

This versatile space is formed by part of the double story extension. The room could be used for a number of purposes including a home office, play room, family room or separate snug area. The room has a double glazed window to the front aspect and panel radiator.

### Ground Floor WC 7'8 x 3'2 (2.34m x 0.97m)

The useful ground floor WC has a double glazed window to the side aspect. The suite comprises of a low level WC and hand wash basin.

### First Floor Landing

The first floor landing has doors opening into all four bedrooms, the family bathroom and a useful storage cupboard.

### Bedroom One 14'1 x 8'8 (4.29m x 2.64m)

Double bedroom with double glazed window to the front aspect and panel radiator.

### Bedroom Two 11'4 x 8'1 (3.45m x 2.46m)

Double bedroom with double glazed window to the rear aspect and panel radiator.

### Bedroom Three 12'2 x 7'8 (3.71m x 2.34m)

Double bedroom with double glazed window to the front aspect and panel radiator.

### Bedroom Four 9'1 x 6'5 (2.77m x 1.96m)

Bedroom with double glazed window to the front aspect and panel radiator.

### Bathroom 6'5 x 5'6 (1.96m x 1.68m)

The modern family bathroom has a double glazed window to the rear aspect. The suite comprises of a low level WC, hand wash basin, bath with shower over and shower screen and heated towel rail.

### Outside

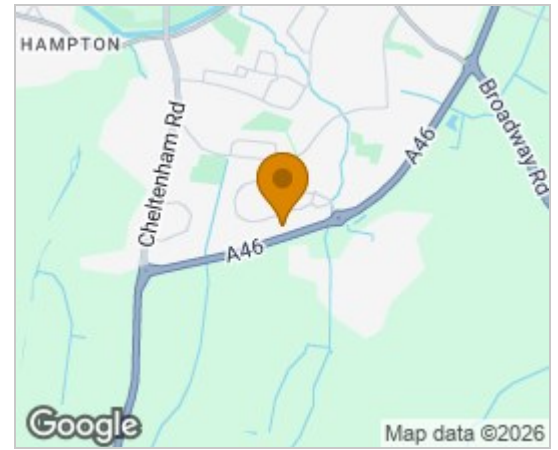
As you approach the property you can appreciate the position within a popular cul de sac and will find off road parking for two vehicles to the front.

To the rear of the home is a well presented rear garden. The garden has a spacious patio with lawn beyond and a side gate for rear access.

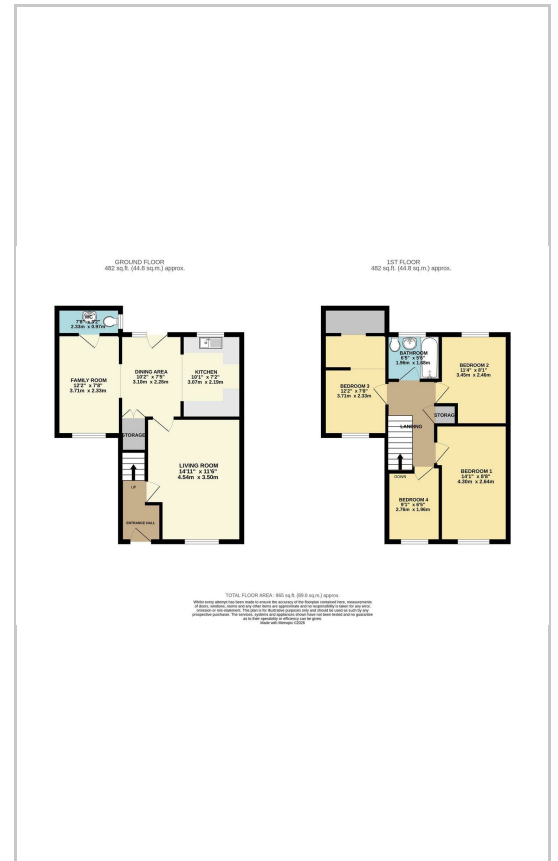
### Referrals

We routinely refer to the below companies in connection with our business. It is your decision whether you choose to deal with these. Should you decide to use a company below, referred by Leggett & James Ltd, you should know that Leggett & James Ltd would receive the referral fees as stated. Team Property Services £100 per transaction on completion of sale and £30 of Love2Shop vouchers on completion of sale per transaction.

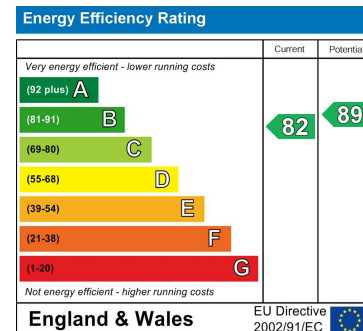
## Area Map



## Floor Plans



## Energy Efficiency Graph



These particulars, whilst believed to be accurate are set out as a general outline only for guidance and do not constitute any part of an offer or contract. Intending purchasers should not rely on them as statements of representation of fact, but must satisfy themselves by inspection or otherwise as to their accuracy. No person in this firm's employment has the authority to make or give any representation or warranty in respect of the property.