



47-51 Mersey View, Liverpool, L22 6AB

£900 PCM

We are pleased to offer TO LET UNFURNISHED 2 Bedroom FIRST FLOOR Apartment, The building has been subject to an exceptional conversion, set in the heart of Brighton - Le- Sands, one of Liverpool's most affluent suburbs. Located close to local transport links, beach and amenities.

The property comprises of hallway, Open plan Lounge Kitchen, kitchen includes appliances fridge/freezer, electric oven and hob, plumbing for washing machine. Two double bedrooms and shower room. The property benefits from double glazing, electric heating, carpets, communal parking to rear

Council Tax Band: A

Deposit: £1038.00



Hallway

Laminate flooring

Open Plan Lounge Kitchen

Double glazed windows, 2 x electric wall heaters , laminate flooring kitchen comprises of a range of fitted base and wall units with stainless steel single sink with mixer tap, hob, oven, extractor hood integrated fridge / freezer

Bedroom 1

Double glazed window electric wall heater and carpet

Bedroom 2

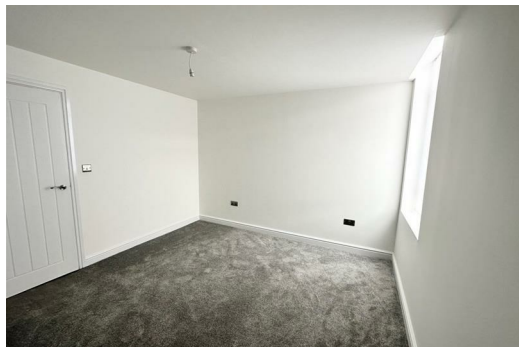
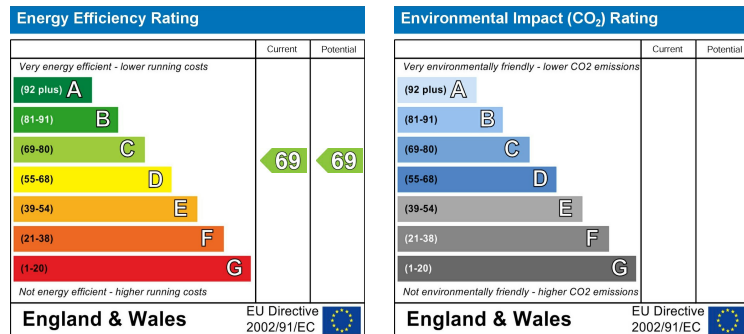
Double glazed window, Electric wall heater and carpet

Shower Room

High gloss wall tiles, large walk in shower unit , electric shower, vanity sink low level w.c.

Rear Exterior

Communal Parking



Berkeley Shaw Estate Agents Limited.
Company No. 0784754

Berkeley Shaw Real Estate Limited.
Company No. 05206927

