



The Avenue, TW9

£475,000

An exceptional opportunity to acquire a beautifully presented top-floor conversion apartment, offering 577 sq ft of stylish and well-designed living space within an elegant period building. This attractive property benefits from a share of the freehold, no onward chain, and access to well-maintained communal gardens. Additional features include off-street parking, enhancing both convenience and desirability.

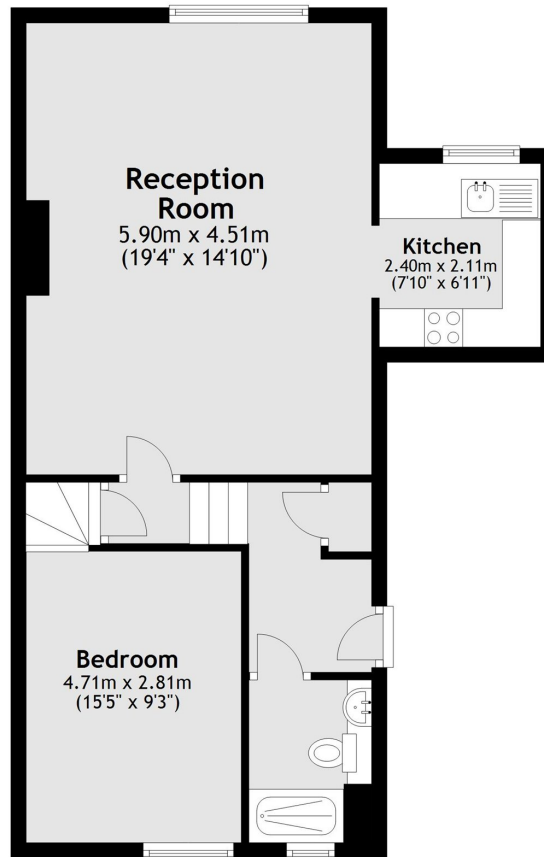
The Avenue is ideally located for Richmond Park and Royal Botanic Gardens Kew. The commuter is equally well catered for with Kew Gardens, Richmond and North Sheen stations close to hand with additional excellent bus services to Central London.

Features

- One Double Bedroom
- Spacious Reception Room
- Share Of Freehold
- Off Street Parking
- No Forward Chain
- Communal Garden

The Avenue, Kew, TW9

Second Floor



Total area: approx. 53.6 sq. metres (577.2 sq. feet)