



6 The Wend, Longhope GL17 0QR
£325,000



6 The Wend, Longhope GL17 0QR

• Four bedroom family home • Located in the village of Longhope • Close to local amenities • Off road parking for several vehicles • Private rear garden • NO CHAIN • Forest of Dean District Council. Tax Band D - £2,375.64 (2026/27) • EPC E54

£325,000



1 High Street, Newent, GL18 1AN

01531 828970

newent@naylorpowell.com

www.naylorpowell.com

Entrance Hall

Entrance hall to provide access to Living room and stairs to first floor.

Living Room

Spacious living room with a door leading through to the dining room / kitchen. Window overlooking front aspect.

Kitchen / Dining Room

A well maintained kitchen with a range of floor and eye level units and integrated appliances to include dishwasher and stainless steel sink along with space for an oven. Window overlooking the rear garden and a sliding door leading out.

Family Room / Bedroom Four

Family room to include French doors leading to rear garden.

Shower Room

A fully tiled shower room to include a white suite comprising WC, wash hand basin and enclosed shower cubical.

Study

Study to include a window overlooking the front aspect and a door leading out.

Bedroom One

Double bedroom with window overlooking the front aspect.

Bedroom Two

Double bedroom with window overlooking rear aspect

Bedroom Three

Window overlooking front aspect.

Family Bathroom

Fully tiled bathroom with a white suite comprising a bath with overhead shower, WC and hand wash basin. Frosted window to rear aspect

Outside

To the front of the property is a paved driveway with off road parking for several vehicles. The rear garden has a patioed area suitable for alfresco dining along with a lawned area boasting a range of mature shrubs and bushes.

Location

Longhope is a small village in west Gloucestershire, situated within the Forest of Dean it has been in existence since before the invasion of the Normans in 1066. The place name means long, enclosed valley which describes the aspect of the village. With the local Hope Brook C of E primary school for 4-11 years and Pippins Preschool Nursery from 2 years, an active football club and local post office.

Material Information

Tenure - Freehold

Council Tax Band D

Forest of Dean District Council - £2,375.64 (2026/27)

Electricity supply: Mains

Water supply: Mains

Sewerage: Mains

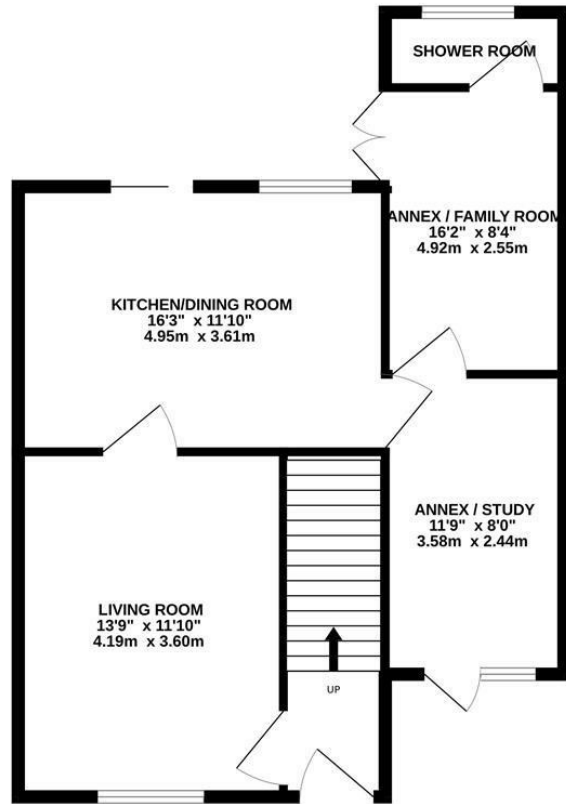
Heating: Electric Underfloor heating in all rooms with individual thermostatic controllers

Broadband speed: Standard 13 Mbps, Superfast 75 Mbps, Ultrafast 1000 Mbps. Gigaclear currently.

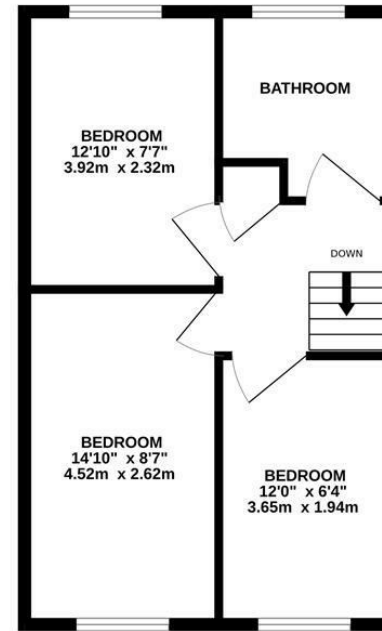
Mobile phone coverage: Vodafone, EE, Three and O2



GROUND FLOOR



1ST FLOOR



Whilst every attempt has been made to ensure the accuracy of the floorplan contained here, measurements of doors, windows, rooms and any other items are approximate and no responsibility is taken for any error, omission or mis-statement. This plan is for illustrative purposes only and should be used as such by any prospective purchaser. The services, systems and appliances shown have not been tested and no guarantee as to their operability or efficiency can be given.
Made with Metroplan ©2026

Disclaimer: These particulars do not form part of any contract and no responsibility is accepted for any errors or omissions in any statement made, whether verbally or written for or on behalf of Naylor Powell.

Floorplans have been prepared for identification purposes only, they are not to scale and no guarantee can be given as to their accuracy.

Prospective purchasers please be aware none of the appliances, boiler, heaters etc. which may have been mentioned in these particulars have been tested and no guarantee can be given that they are in working order. Prospective purchasers should arrange for such items to be tested at their own expense.

