



8 Brentwood Road, Brincliffe, Sheffield, S11 9BU

Saxton Mee

8 Brentwood Road Brincliffe

Offers Around

£700,000

Guide Price £700,000-£725,000

Spacious Five-Bedroom Detached Family Home in Desirable Nether Edge

Nestled in a quiet cul-de-sac in the sought-after Nether Edge, this extended and deceptively spacious five double bedroom detached home offers exceptional accommodation for modern family living. Lovingly maintained, it's perfect for growing or multi-generational families, featuring a versatile ground-floor bedroom/study ideal for a dependent relative or home office.

The generous hallway leads to a spacious lounge with a charming fireplace and Barbas multi-fuel stove, creating a cozy focal point. At the heart of the home is the light-filled open-plan kitchen, living, and dining area. Skylights and patio doors open onto the rear garden, providing a bright, welcoming space for family life and entertaining. The kitchen boasts a central island, multi-fuel range cooker, and extensive storage, with room for both a dining suite and a relaxed seating area.

A practical utility room with garage access and a downstairs WC complete the ground floor. Upstairs, four large double bedrooms await. The master enjoys an en suite shower, while the remaining rooms share a well-appointed family bathroom. There's also potential to add two further en suites.

Outside, the front garden offers off-road parking, and the private rear garden is beautifully tiered with mature shrubs, a herb garden, and multiple decked areas—perfect for relaxing or entertaining.

The property is ideally positioned for a wide range of local amenities, with the vibrant Nether Edge village just a short walk away. The area is also well served by excellent public transport links and provides convenient access to Sheffield city centre. Families are particularly well catered for, with a selection of highly regarded primary and secondary schools close by, both state and independent.

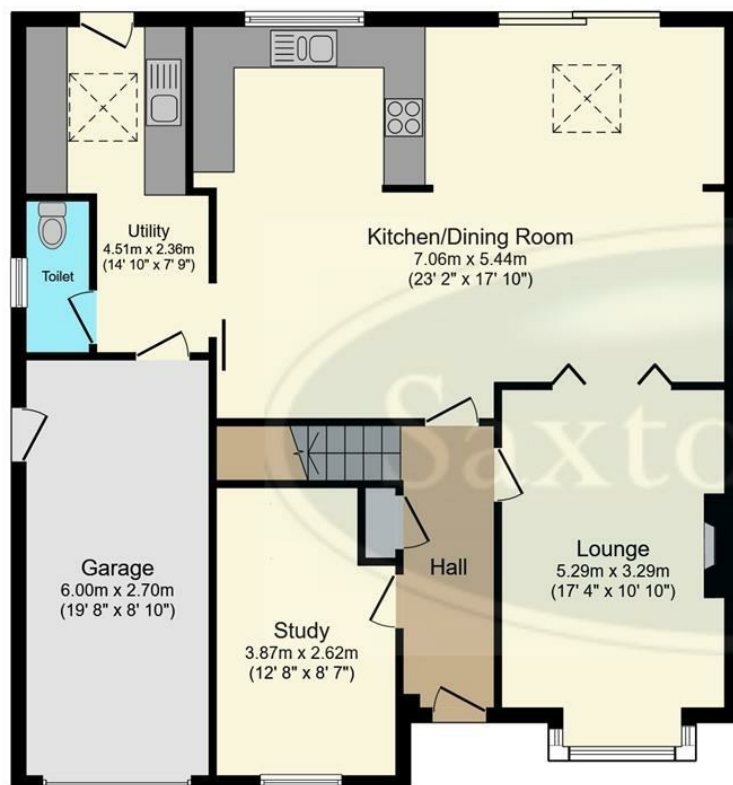
This is a rare opportunity to acquire a substantial, flexible family home in a prime location.



- Spacious Five Double Bedroom Detached Home
- Fabulous Open-Plan Kitchen, Living And Dining Area
- Patio Doors Leading Out Onto Rear Garden
- Lounge With Feature Fireplace
- Utility Room With Internal Access To Garage
- Master Bedroom With En Suite Shower Room
- Beautiful Private Rear Garden Plus Front Garden And Off Road Parking
- Close To Well Regarded Schools
- Popular And Vibrant Location Of Nether Edge Close To Excellent Amenities
- Freehold

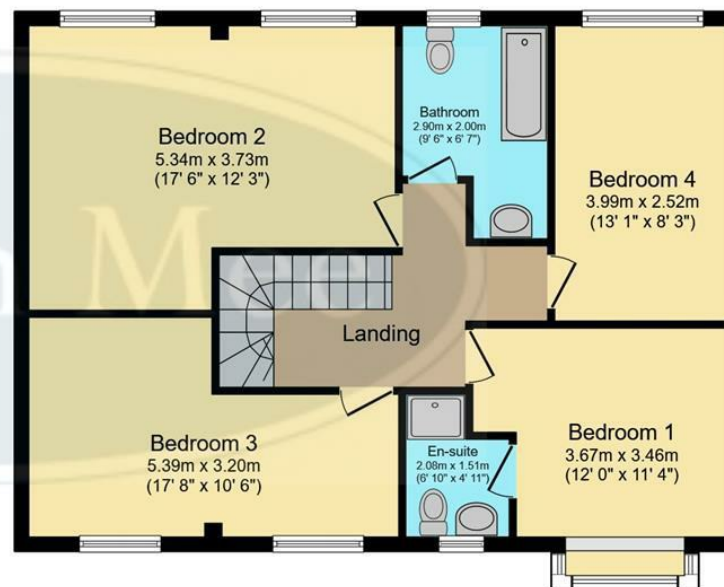






Ground Floor

Floor area 107.3 sq.m. (1,155 sq.ft.)



First Floor

Floor area 76.7 sq.m. (826 sq.ft.)

Total floor area: 184.0 sq.m. (1,981 sq.ft.)

This floor plan is for illustrative purposes only. It is not drawn to scale. Any measurements, floor areas (including any total floor area), openings and orientations are approximate. No details are guaranteed, they cannot be relied upon for any purpose and do not form any part of any agreement. No liability is taken for any error, omission or misstatement. A party must rely upon its own inspection(s). Powered by www.Propertybox.io

While we endeavour to make our sales particulars fair, accurate and reliable, they are only a general guide to the property and, accordingly, if there is any point, which is of particular importance to you, please contact the relevant office. The Agents have not tested any apparatus, equipment, fittings or services and so cannot verify they are in working order. The buyer is advised to obtain verification. Please note all the measurement details are approximate and should not be relied upon as exact. All plans, floor plans and maps are for guidance purposes only and are not to scale. Under no circumstances should they be relied upon as exact or for use in planning carpets and other such fixtures, fittings or furnishings. YOUR HOME IS AT RISK IF YOU DO NOT KEEP UP REPAYMENTS ON A MORTGAGE OR OTHER LOAN SECURED ON IT. 'A Life Assurance policy may be requested.' 'Written Quotations of credit terms available on request.'

Banner Cross
T: 0114 268 3241
E: bannercross@saxtonmee.co.uk
www.saxtonmee.co.uk

Hathersage
T: 01433 650009
E: hathersage@saxtonmee.co.uk

Bakewell
T: 01629 815307
E: bakewell@saxtonmee.co.uk

Matlock
T: 01629 828250
E: matlock@saxtonmee.co.uk

