



Somerleyton Court, Kidderminster, DY10 3DW

**SHELDON
BOSLEY
KNIGHT**

LAND AND
PROPERTY
PROFESSIONALS

Property Description

*** Deposit Alternative Available ***

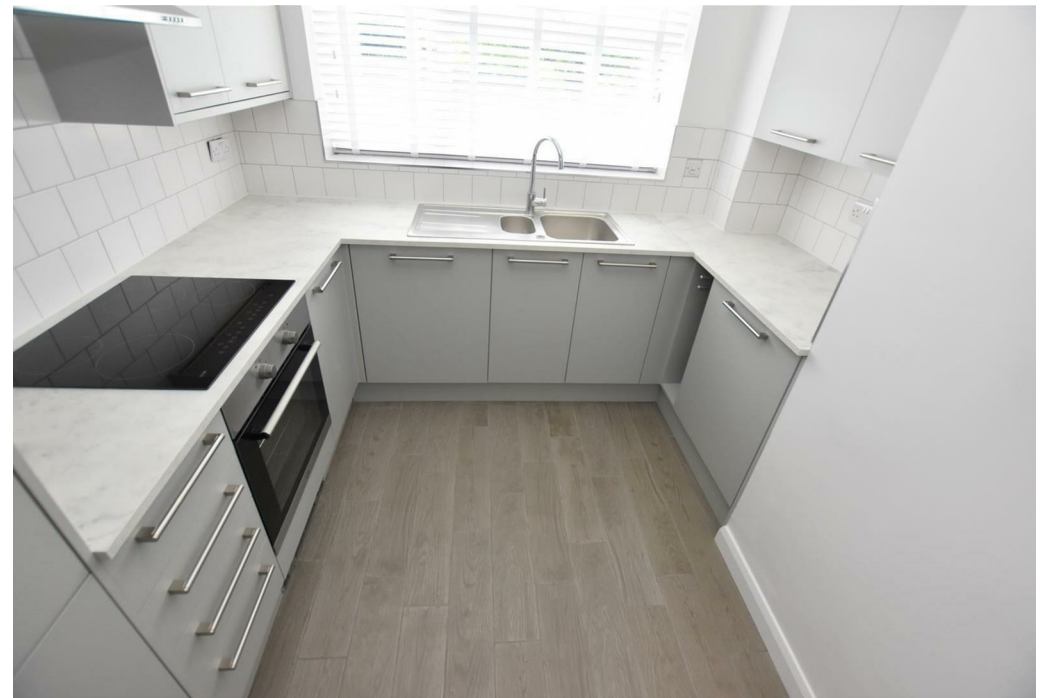
We are delighted to present this beautifully presented ground floor apartment at Somerleyton Court, ideally located within walking distance of Kidderminster town centre and train station. Finished to an exceptional standard throughout, this stylish home offers modern, spacious living in a quiet and well-maintained setting.

The property features a bright and generously sized living room with a large window allowing plenty of natural light into the space. The contemporary fitted kitchen comes complete with integrated appliances including a dishwasher, washer-dryer, and fridge-freezer.

There are two well-proportioned double bedrooms, with one benefitting from built-in wardrobes, alongside a modern bathroom fitted with a shower over the bath. The hallway also offers two large storage cupboards, providing excellent additional space.

Surrounded by attractive communal gardens, the property enjoys a peaceful location while remaining conveniently close to local amenities and excellent transport links, including easy access to Birmingham, Worcester, and the M42/M5 motorway network.





Key Features

- *** Deposit Alternative Available ***
- Ground Floor Flat
- Spacious Lounge
- Modern Fully Fitted Kitchen
- Modern Bathroom with Shower over Bath
- Two Equal Sized Double Bedrooms
- Generous storage
- Well Maintained Gardens
- EPC Rating: D
- Council Tax Band: B

£825 PCM