



Connells

Hyde Street
Aston Clinton Aylesbury



Property Description

This beautifully presented four-bedroom detached family home is nestled in the sought-after village of Aston Clinton, offering generous and versatile accommodation set across three well-planned floors. Blending modern finishes with excellent functionality, this is an ideal home for growing families.

The property is approached via an attractive hedged frontage and opens into a welcoming entrance hall with useful under-stair storage. The ground floor benefits from underfloor heating throughout and comprises a bright dual-aspect living room featuring a large bay window, a stylish downstairs WC, and an impressive open-plan kitchen/dining space. The kitchen is fitted with sleek quartz worktops, integrated appliances, and ample room for entertaining, while a separate utility room provides additional practicality.

On the first floor are three well-proportioned bedrooms, one of which enjoys a private ensuite, along with a modern family bathroom featuring both a bath and separate shower. The top floor is dedicated to a superb principal suite, complete with eaves storage, a contemporary shower room, and a separate dressing room with built-in wardrobes.

Externally, the enclosed rear garden offers a combination of lawn and patio seating areas with side access—perfect for relaxing or hosting guests. The home is further enhanced

by a private driveway and double garage with power and lighting.

Entrance Hall

Door to front
Understairs storage
Tiling underfoot with underfloor heating

Cloakroom

WC
Wash hand basin
Tiling underfoot with under floor heating
Radiator

Lounge

21' 7" max x 14' 9" max (6.58m max x 4.50m max)
Bay window to side
Window to front
Carpet underfoot
Radiator

Kitchen/Diner

21' 6" max x 9' 1" max (6.55m max x 2.77m max)
Window to front
French doors to side
Tiling underfoot with underfloor heating
Wall and base units
Quartz countertops
Gas hob and double electric oven

Integrated fridge/freezer and dishwasher

Utility Room

8' x 5' 10" (2.44m x 1.78m)

Wall and base units

Tiling underfoot with underfloor heating

Space for washing machine and dryer

Sink/drain

Landing

Carpet underfoot

Double airing cupboard on top floor

Bedroom One (1st floor)

21' 7" max x 9' 2" max (6.58m max x 2.79m max)

Window to front and side

Carpet underfoot

Radiator

En-Suite To Bedroom One

WC,

Wash hand basin

Shower cubicle

Tiling underfoot

Part tiling

Towel radiator

Bedroom Three (1st Floor)

12' 6" max x 11' 4" max (3.81m max x 3.45m max)

Window to rear

Carpet underfoot

Radiator

Bedroom Four (1st Floor)

10' 8" max x 9' 9" max (3.25m max x 2.97m max)

Window to front

Carpet underfoot

Radiator

Bathroom (1st Floor)

Window to front

Towel radiator

WC

Wash hand basin

Bath/mixer with shower

Tiling underfoot

Part tiling

Bedroom Two (2nd Floor)

15' 9" max x 12' 7" max (4.80m max x 3.84m max)

Bay window to rear

Carpet underfoot

Radiator

Eaves storage

Dressing Room (2nd Floor)

9' 3" max x 7' 9" max (2.82m max x 2.36m max)

Carpet underfoot

Radiator

Built in wardrobes

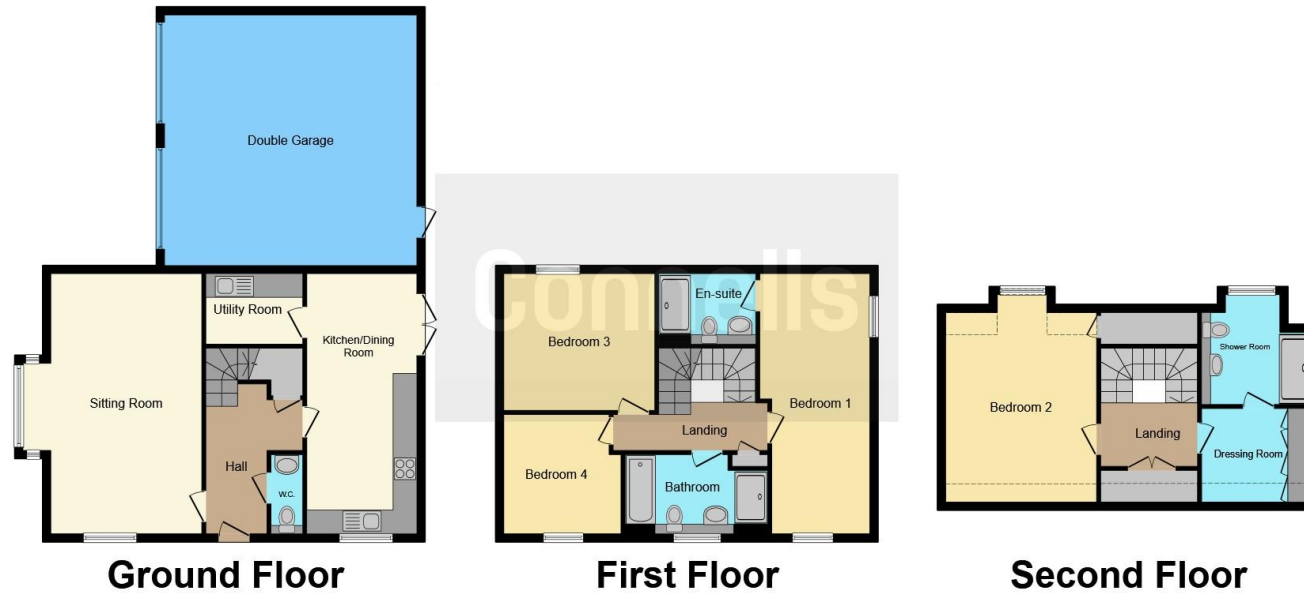
Bathroom (2nd floor)

Bay window to rear









This floor plan is for illustrative purposes only. It is not drawn to scale. Any measurements, floor areas (including any total floor area), openings and orientation are approximate. No details are guaranteed, they cannot be relied upon for any purpose and they do not form part of any agreement. No liability is taken for any error, omission or misstatement. A party must rely upon its own inspection(s). Powered by www.focalagent.com

To view this property please contact Connells on

T 01296 395 111
E aylesbury@connells.co.uk

2 Temple Street
 AYLESBURY HP20 2RH

EPC Rating: B Council Tax
 Band: G

Tenure: Freehold

view this property online connells.co.uk/Property/ALS312619



1. MONEY LAUNDERING REGULATIONS Intending purchasers will be asked to produce identification documentation at a later stage and we would ask for your co-operation in order that there will be no delay in agreeing the sale. 2. These particulars do not constitute part or all of an offer or contract. 3. The measurements indicated are supplied for guidance only and as such must be considered incorrect. Potential buyers are advised to recheck measurements before committing to any expense. 4. We have not tested any apparatus, equipment, fixtures, fittings or services and it is in the buyers interest to check the working condition of any appliances.

Connells Residential is registered in England and Wales under company number 1489613, Registered Office is Cumbria House, 16-20 Hockliffe Street, Leighton Buzzard, Bedfordshire, LU7 1GN. VAT Registration Number is 500 2481 05.

See all our properties at www.connells.co.uk | www.rightmove.co.uk | www.zoopla.co.uk

Property Ref: ALS312619 - 0007