

*Franklyn
James*



Plate House, 3 Burrells Wharf Square, E14 3TH

£1,750 Per Month

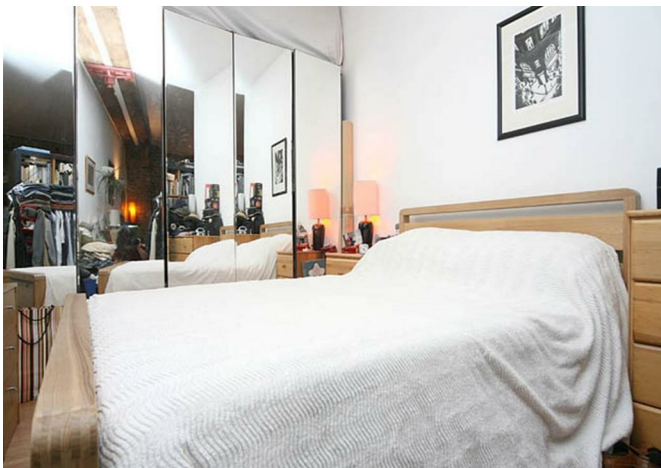


Plate House, 3 Burrells Wharf Square, E14 3TH

£1,750 Per Month

- Studio apartment
- High ceilings
- Rarely available duplex apartment within a characterful converted school building
- Stylish mezzanine bedroom with attractive architectural features
- Generous reception room perfect for entertaining and relaxing
- Abundance of natural light throughout the property
- 24 hour concierge service
- Residents' gym and swimming
- Easy access into the City
- Conveniently positioned within easy reach of Westferry DLR and Canary Wharf

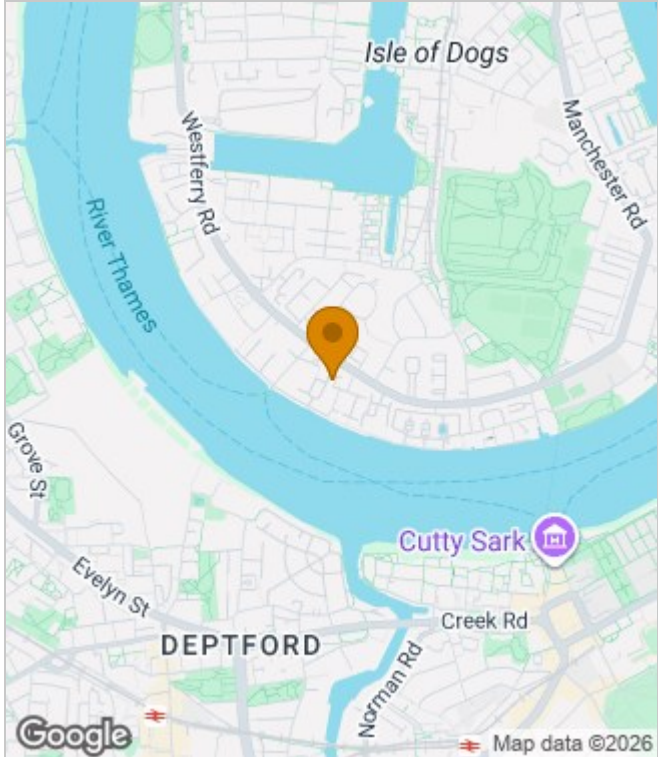
EPC rating- C
Tax band- D



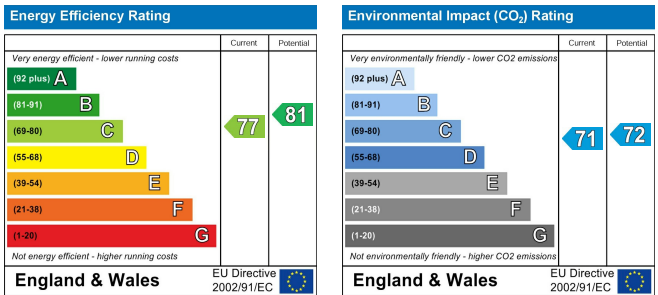
A rare opportunity to rent this stunning duplex apartment set within a beautifully converted former school building. Boasting impressive high ceilings and an abundance of natural light, the property offers a spacious reception area, a superb mezzanine bedroom and a separate study on the mezzanine level, ideal for home working.

Finished and furnished to a high standard throughout, the apartment combines character and contemporary living in a highly sought-after development. Old School Square is conveniently located within easy reach of Westferry DLR, providing excellent transport links to Canary Wharf and the City

Area Map



Energy Performance Graph



These particulars, whilst believed to be accurate are set out as a general outline only for guidance and do not constitute any part of an offer or contract. Intending purchasers should not rely on them as statements of representation of fact, but must satisfy themselves by inspection or otherwise as to their accuracy. No person in this firm's employment has the authority to make or give any representation or warranty in respect of the property.



29 Narrow Street, London, E14 8DP
 Tel: 02077911777 Email: lettings@franklynjames.co.uk <https://www.franklynjames.co.uk>