



Eastcombe Avenue, SE7

£850,000

A stunning three bedroom Victorian terraced house, beautifully presented throughout and thoughtfully extended to the rear to create exceptional living and entertaining space.

Located on the popular Charlton Slopes within the catchment area of popular primary schools, an outstanding secondary school and nurseries. There are excellent transport links to the City and Canary Wharf with regular buses for North Greenwich station and within 0.5 miles of Westcombe Park Station. This property is also a short walk away from Blackheath Standard and Greenwich Park.

Features

Three Bedroom Terrace
Refurbished & Extended
Sought After Road
Within Catchment Area Of
Outstanding Schools
Beautifully Fitted Kitchen
Potential to Extend (STPP)



Eastcombe Avenue, SE7

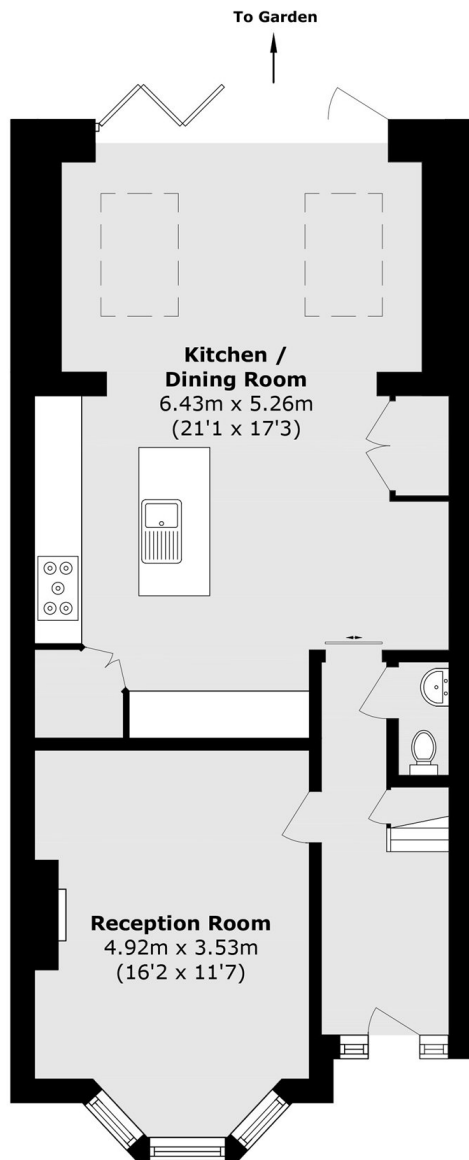
The ground floor offers a striking separate reception room to the front, elegantly decorated and featuring a beautiful original fireplace. Throughout the ground floor there is parquet herringbone flooring, adding both character and continuity. To the rear, the impressive kitchen/diner forms the heart of the home, with fully integrated appliances, a popular larder cupboard and including a concealed utility area. Bi-folding doors open directly onto an east-facing garden which is completely not overlooked, providing a private and tranquil outdoor space. A convenient downstairs WC completes the ground floor.

Upstairs, the first floor comprises three genuine double bedrooms, with the principal bedroom benefiting from built-in wardrobes. The family bathroom is finished to an exceptional standard and presented in stunning condition.

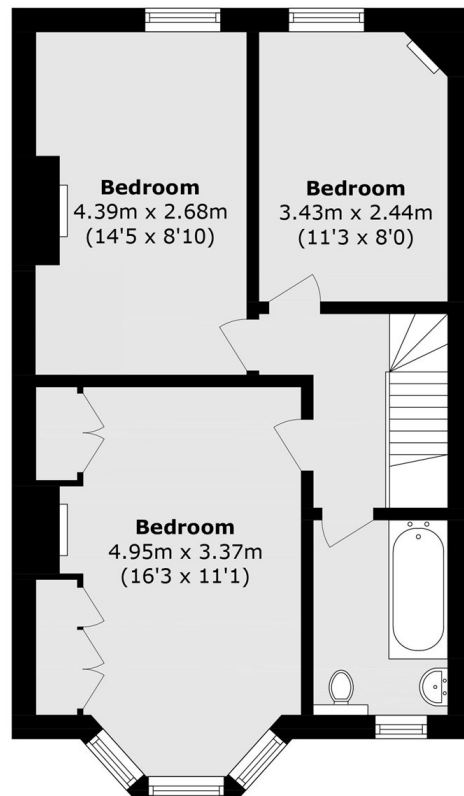
Further benefits include the potential to extend into the loft (STPP), offering scope to add additional accommodation.



Eastcombe Avenue, London, SE7



Ground Floor



First Floor

Total area (approx.): 107.3 sq. m (1154.9 sq. ft)