

Harlow Crescent, Oxley Park

Guide Price £375,000

 4  2  2



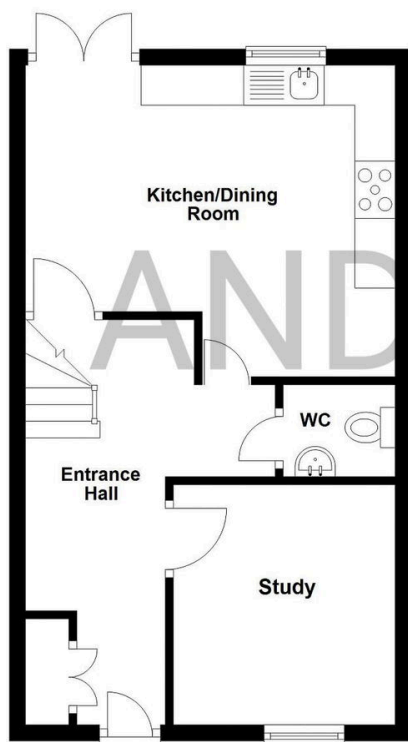
A spacious and freshly redecorated four bedroom town house set over three floors in the ever-popular Oxley Park, offered for sale vacant with no onward chain. With a kitchen/diner, study, first floor living room, en-suite to the main bedroom, garage and driveway to the rear, this is a superb, move-straight-in family home.

Key Features

- Originally built in 2006
- Council tax band - D
- 113m² = 1216.7 Sq Ft
- No onward chain
- Garage and driveway to rear
- Current owners from new
- Approx. monthly utility bills = £180pcm
- Vacant property
- Recently re-decorated throughout
- REF: AJ1276

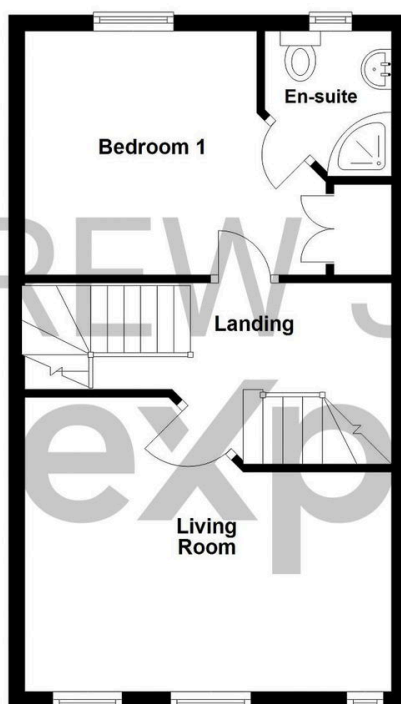
Ground Floor

Approx. 37.8 sq. metres (407.3 sq. feet)



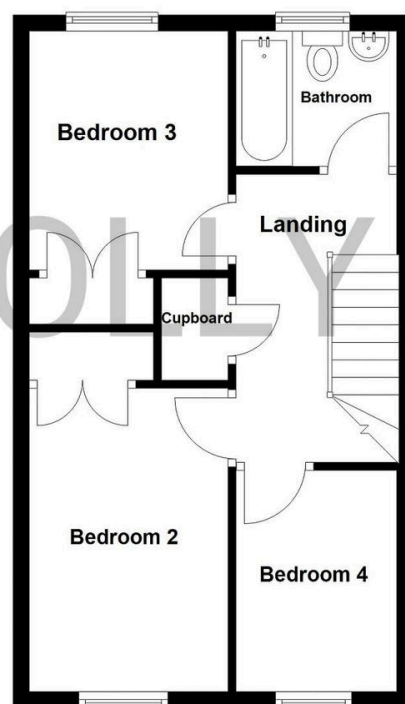
First Floor

Approx. 37.5 sq. metres (404.1 sq. feet)



Second Floor

Approx. 37.7 sq. metres (405.3 sq. feet)



Total area: approx. 113.0 sq. metres (1216.7 sq. feet)