



goundrys
SALES

experts in selling & buying

Harbour Court, Portreath

Guide Price £164,500

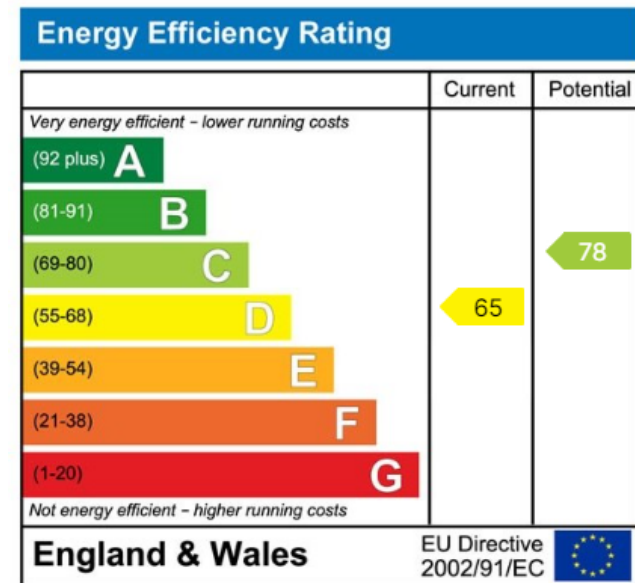
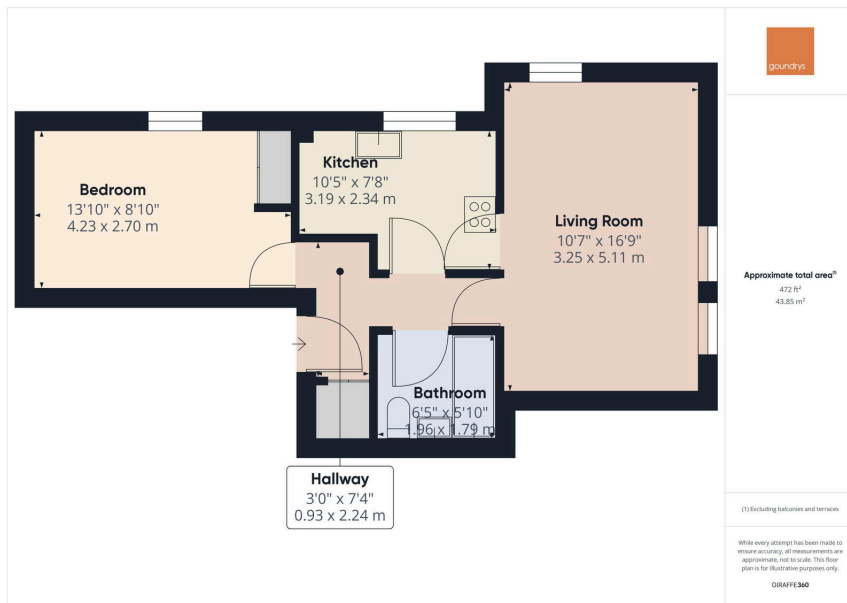
🛏️ 1 🚿 1 🚗 1



- One Bedroom Apartment
- Parking To The Rear
- Communal Gardens
- Well Presented
- No Onward Chain
- Estimated Rental Income of £850 PCM



Situated in the heart of Portreath, just moments from local amenities, the harbour, and the popular beach, this beautifully presented one-bedroom apartment benefits from off-road parking and access to attractive communal gardens.



ST AGNES

6 Churchtown, St Agnes, Cornwall, TR5 0QW

01872 552560 - Sales

01872 278306 - Lettings

www.goundrys.co.uk

Agents Note: Whilst every care has been taken to prepare these sales particulars, they are for guidance purposes only. All measurements are approximate and for general guidance purposes only and whilst every care has been taken to ensure their accuracy, they should not be relied upon and potential buyers are advised to recheck the measurements