



Fletcher Road, W4

£450,000

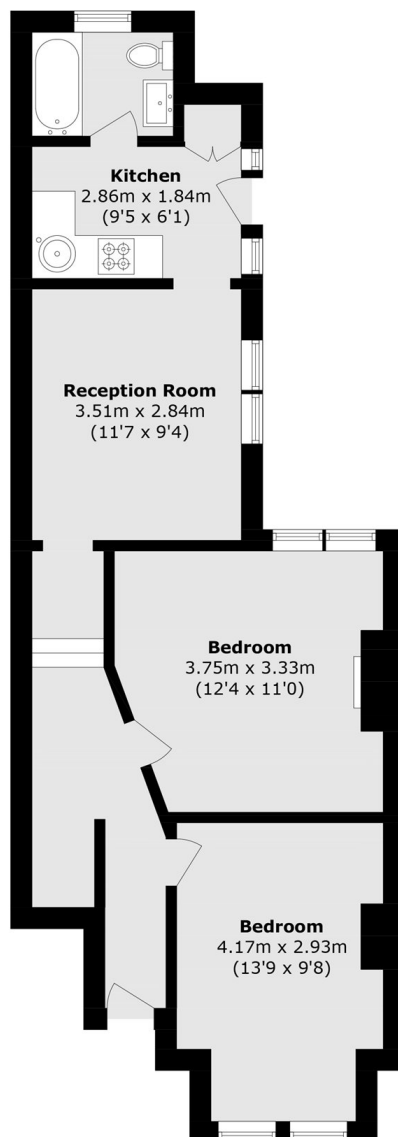
A ground floor, two bedroom maisonette. With private entrance and south-facing patio garden, share of freehold and no onward chain.

Fletcher Road is ideally located in Chiswick, within easy reach of Turnham Green Underground station (District line), providing convenient access into Central London. Chiswick High Road is nearby, offering a wide range of shops, cafes, and restaurants, along with excellent road links via the A4/M4 for driving in and out of London.

Features

Ground Floor Maisonette
Two Bedrooms
Private Courtyard Garden
Share Of Freehold
Close To Transport
No Onward Chain

Fletcher Road,
London, W4



Total area (approx.): 53.8 sq. m (579.1 sq. ft)