



Rubens Place, SW4

£375,000

Dexters



Rubens Place, SW4

A stylish and contemporary one-bedroom apartment set within a secure gated development, offering a perfect blend of comfort and convenience. The property features a bright and well-proportioned living space, complemented by a modern kitchen and a well-appointed bathroom. A standout feature is the private garden, along with the added benefit of an allocated parking space.

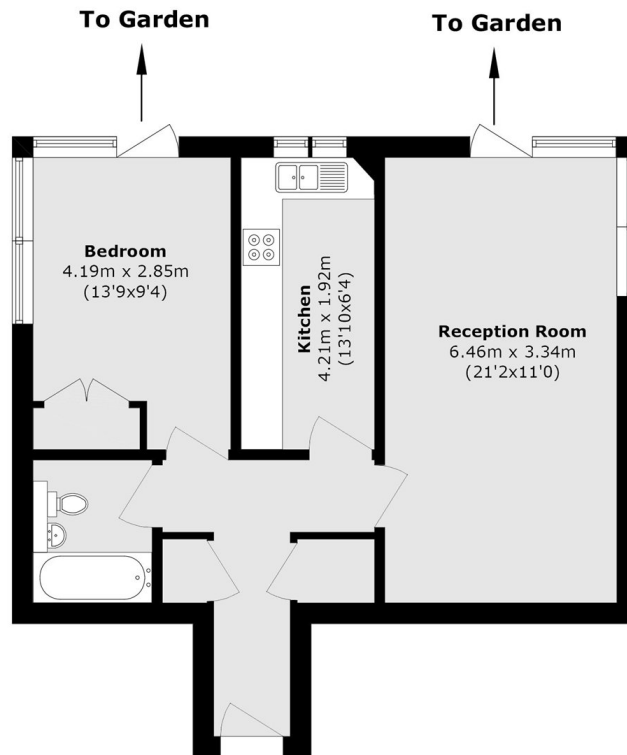
Lethaby House on Rubens Place lies midway between Clapham and Brixton making it very convenient for transport via Clapham North (Northern line) Underground (0.5 mile), Clapham High Street (Windrush line) Overground (0.6 mile) and Brixton (Victoria line) Underground (0.5 mile), as well as shops, bars and restaurants.

Features

- Gated Development
- Parking
- One Bedroom
- Private Garden



Rubens Place, London, SW4



Total area (approx.): 56.0 sq. m (602.8 sq. ft)