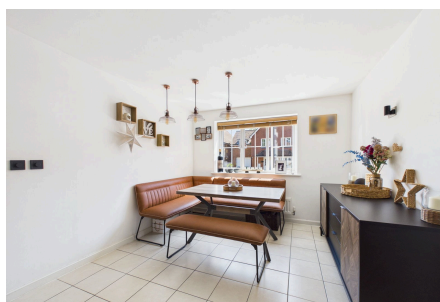


## Roman Lane, Southwater

Guide Price £600,000

 4  2  2

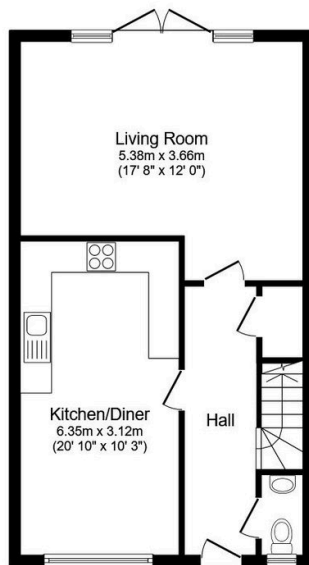


A beautifully presented Detached Family Home, boasting a bright 20ft Kitchen Diner, Four Generous Bedrooms, and a triple glazed 14ft Cabin/Home Office.

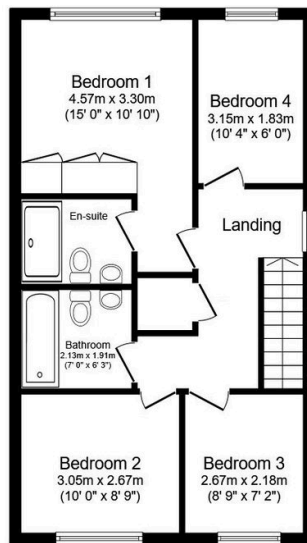
Tenure: Freehold  
Council Tax Band: F  
EPC: Current A - Potential A

## Key Features

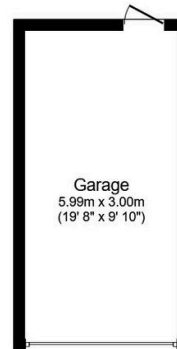
- Watch Our Video Tour
- En Suite to Principal Bedroom
- 19ft Garage & Driveway Parking
- 14ft Triple Glazed Cabin/Home Office
- Close to Popular Schools
- Detached Family Home
- Bright 20ft Kitchen Diner
- Popular Village Location
- Solar Panelling & Home Battery
- Beautifully Presented Throughout



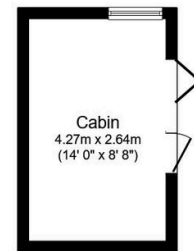
**Ground Floor**  
Floor area 53.4 sq.m. (575 sq.ft.)



**First Floor**  
Floor area 53.4 sq.m. (575 sq.ft.)



**Garage**  
Floor area 28.7 sq.m. (309 sq.ft.)



Total floor area: 135.6 sq.m. (1,460 sq.ft.)

This floor plan is for illustrative purposes only. It is not drawn to scale. Any measurements, floor areas (including any total floor area), openings and orientations are approximate. No details are guaranteed, they cannot be relied upon for any purpose and do not form any part of any agreement. No liability is taken for any error, omission or misstatement. A party must rely upon its own inspection(s). Powered by [www.Propertybox.io](http://www.Propertybox.io)