



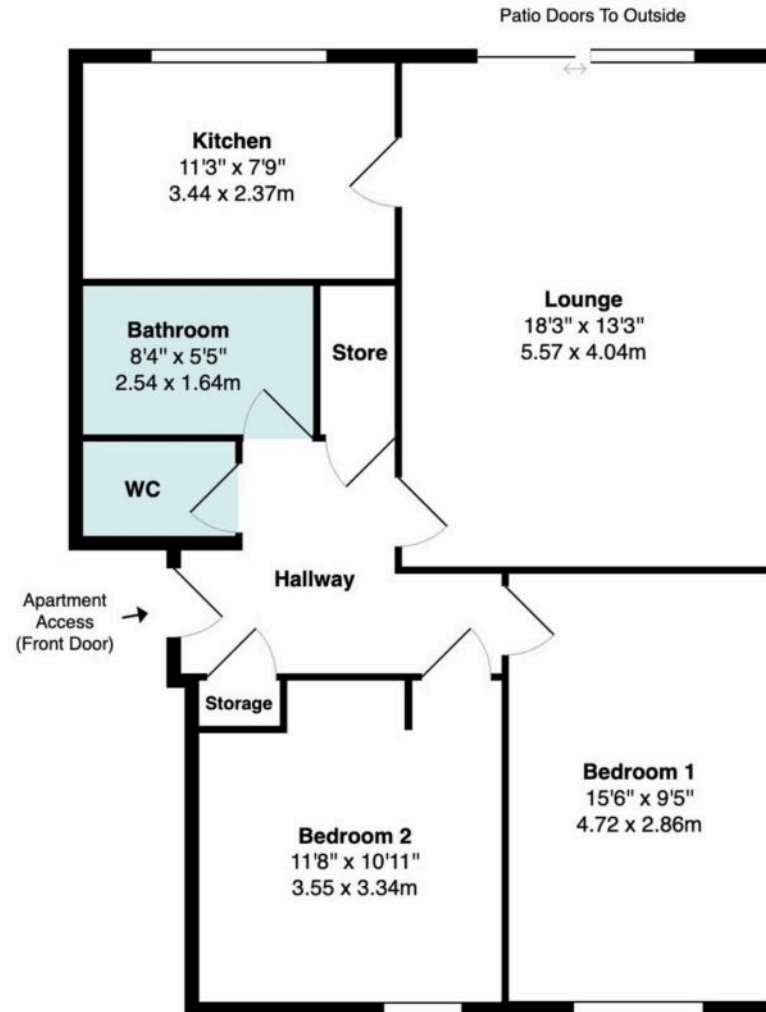
SNAPES
SALES & LETTINGS AGENTS

3 Ravenswood Court, 291 Bramhall Lane - SK3 8TA

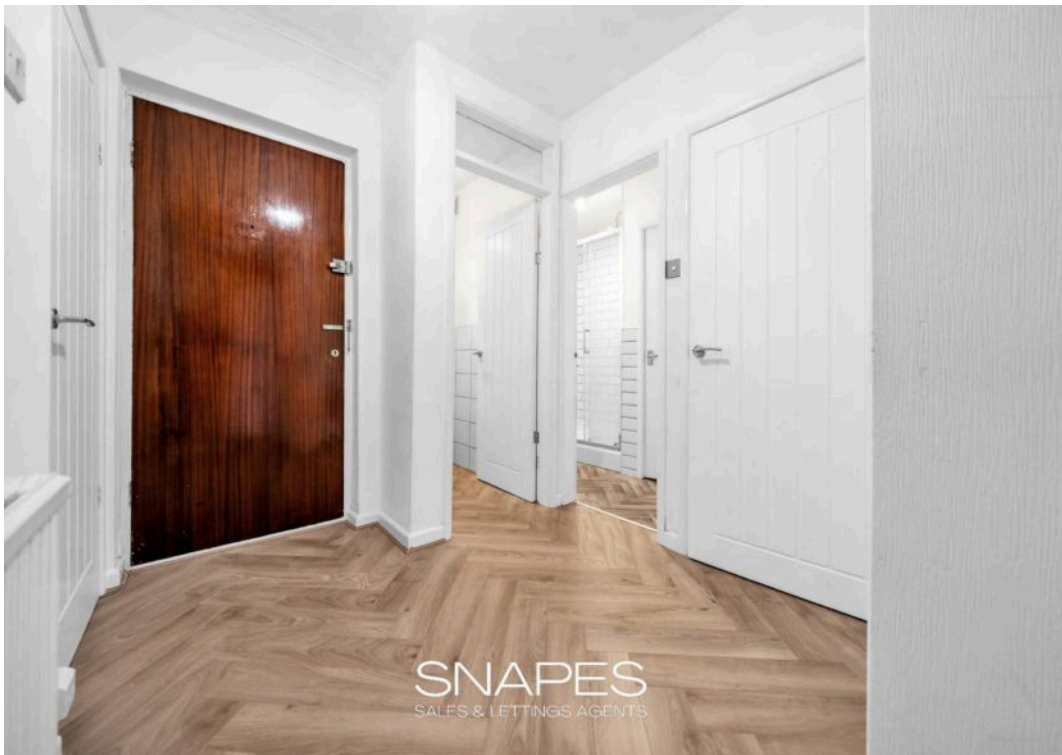
Guide Price £195,000



Ground Floor Apartment



Approximate Total Area: 776 ft² ... 72.1 m²



SNAPES
SALES & LETTINGS AGENTS



SNAPES
SALES & LETTINGS AGENTS



SNAPES
SALES & LETTINGS AGENTS



SNAPES
SALES & LETTINGS AGENTS





Description

A well-proportioned two double bedroom ground floor apartment with patio doors to outside, garage and no onward chain – ideal for down-sizers, first-time buyers or investors.

Offered for sale with **no onward chain**, this well-proportioned **two double bedroom ground floor apartment** presents an excellent opportunity for a variety of buyers, including down-sizers seeking an alternative to a bungalow, first-time buyers or investors.

The property is accessed via a communal entrance leading into a **private hallway**, which provides access to all rooms and useful built-in storage. The standout feature of the apartment is the **generous lounge**, a bright and spacious living area with **patio doors opening directly outside**, allowing plenty of natural light and providing a pleasant outlook. The lounge also leads conveniently through to the **separate fitted kitchen**, creating a practical layout for everyday living.

There are **two good-sized double bedrooms**, both offering ample space for bedroom furniture and making the property suitable for couples, sharers or those needing a guest room or home office.

The accommodation is complemented by a **modern bathroom** and a **separate WC**, adding practicality for households and visiting guests.

Externally, the development benefits from **communal gardens**, while the apartment is sold with the advantage of **its own garage**, as well as **off-street parking**, providing valuable storage and parking solutions.

Situated on **Bramhall Lane**, the property enjoys a **convenient location for transport links**, local amenities and is within easy reach of **Davenport Village**, offering shops, cafes and everyday facilities.

With its **spacious layout (approx. 776 square foot)**, **ground floor position and no onward chain**, this apartment represents a fantastic opportunity for buyers seeking comfortable, low-maintenance living in a well-connected location.

IMPORTANT INFORMATION also know as MATERIAL INFORMATION

Tenure: Freehold / Leasehold

Lease Dates: 999 Years from 01.07.1974

Rent Charge: £10 Per Annum

Service Charge: £257.42 per month.

Material Information: Please read below.

~~~~~

### DISCLAIMER

We use various photo editing services to enhance the photos of the property, including virtual staging (to show an empty property with furniture) and item removal services. This is done to assist house hunters in understanding the space, layout and potential style of the home without the owners' belongings, which would not remain at the property on completion. Any digitally altered, virtually staged or edited images are for illustrative purposes only and must not be relied upon as an accurate representation of the property's current condition, contents, fixtures, fittings or final appearance.

Appliances and services have not been tested, including (but not limited to) heating, water, electrical, plumbing, drainage, alarms, and any other mechanical or electrical installations. No warranty or representation is given as to their condition or working order. Purchasers are advised to obtain independent professional verification and carry out their own inspections prior to exchange of contracts.

All measurements, dimensions and floor areas are approximate and provided for guidance only. Where measurements are stated, they are likely to represent the maximum room dimensions unless otherwise specified. Any reference to area has been calculated using floor plan software and is for indicative purposes only. Buyers must not rely on any stated measurements or floor areas for valuation, mortgage, legal, or purchasing purposes, and should satisfy themselves as to accuracy by inspection and/or professional survey.

**\*Important / Material Information:** When viewing this property online, please locate and click the link, tab or call-to-action (CTA) labelled "**Material Information**" or "**Important Information**", as it contains material information relevant to the property, its position and surroundings. This may include (but is not limited to) tenure, title information, local planning applications, schools, transport links and flood risk. Some websites may remove, rename, truncate or display this information incorrectly. If the link is not visible, unavailable, or you are viewing these particulars in printed form, you must contact our office to request access prior to viewing and/or making an offer. It is the responsibility of any buyer to ensure they have read and understood this information before proceeding.

Whilst every effort is made to ensure the accuracy of these particulars, they may be produced, reproduced or displayed by third-party websites and platforms over which we have no control. As a result, information, links, formatting or wording may be altered, omitted or displayed incorrectly. We cannot accept responsibility for any inaccuracies arising from third-party reproduction. Prospective purchasers are therefore advised to refer to the full property details provided directly by our office and to raise any queries prior to viewing or offering. We strongly advise any prospective buyer to consult with their solicitor and to obtain an independent survey or specialist reports before entering into any agreement to purchase, and prior to exchange of contracts.

EPC Rating: C



## Snapes Estate Agents Bramhall

Snapes Estate Agents, Maple House Maple Road - SK7 2DH

0161 440 8700

[bramhall@snapes.co.uk](mailto:bramhall@snapes.co.uk)

[www.snapes.co.uk](http://www.snapes.co.uk)

