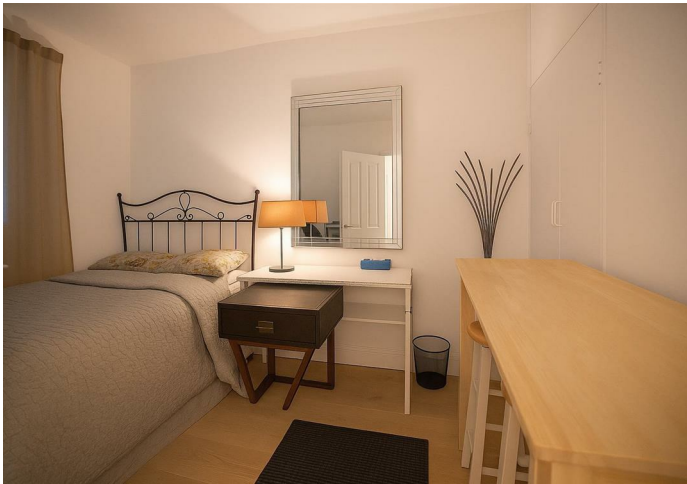


LEASEHOLD



Flat - Purpose Built

WINDMILL NEW NORTH STREET, LONDON, WC1N 3PG

£825,000

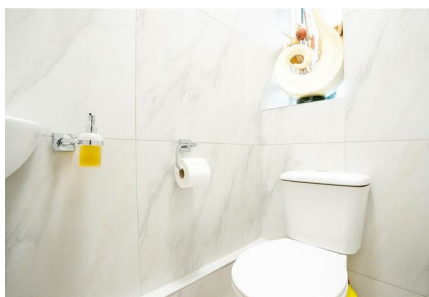
FEATURES

- Walking distance to Holburn Underground Station
- Links to Central and Piccadilly lines
- Two double bedrooms
- Spacious living area
- Balcony
- Two Wc's
- Recently refurbished to a high standard



PARK & VALE
sales | lettings | management

2 Bedroom Flat - Purpose Built located in London



PARK AND VALE LIMITED | 241 MAIDA VALE, LONDON, W9 1QJ



PARK AND VALE LIMITED | 241 MAIDA VALE, LONDON, W9 1QJ



PARK AND VALE LIMITED | 241 MAIDA VALE, LONDON, W9 1QJ

Call us on

0207 112 8323

info@parkandvale.co.uk

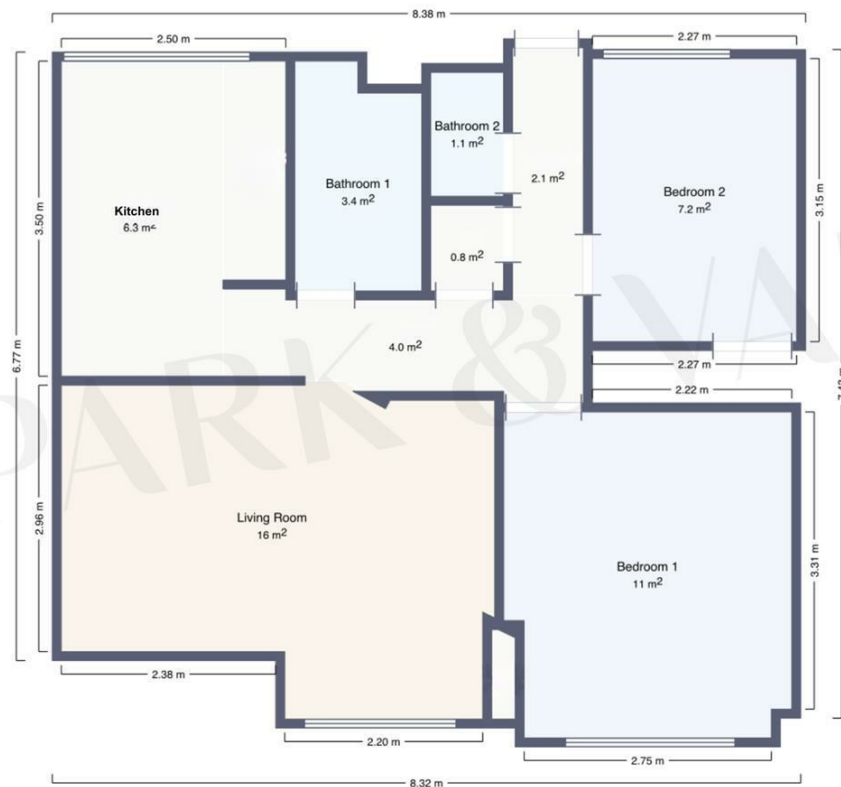
Council Tax Band

Floorplan

Approximately 60 m² total

Ground floor

2 Windmill, New North Street, London



Approx Gross Internal Area: 60 sq m

For Illustration Purposes Only – Not to Scale / Floor Plan by Park & Vale
This floor plan should be used as a general outline for guidance only.
Any intending purchaser or lessee should satisfy themselves by inspection, searches, enquiries and full survey as to the correctness of each statement. Any areas, measurements or distances quoted are approximate and should not be used to value a property or be the basis of any sale or let.

Energy Efficiency Rating		
	Current	Potential
Very energy efficient - lower running costs		
(92 plus) A		
(81-91) B		
(69-80) C		
(55-68) D		
(39-54) E		
(21-38) F		
(1-20) G		
Not energy efficient - higher running costs		
England & Wales		EU Directive 2002/91/EC

Agents Note: Whilst every care has been taken to prepare these particulars, they are for guidance purposes only. All measurements are approximate and are for general guidance purposes only and whilst every care has been taken to ensure their accuracy, they should not be relied upon and potential buyers are advised to recheck the measurements.

PARK & VALE
sales | lettings | management