



Connells

Westmeads Road
WHITSTABLE



Property Description

Sold with on onward chain, we recommend internal viewings of this modern, two bedroom apartment, part of a modern block within moments of Whitstable's amenities and sea front.

The property sits on the top floor of an immaculately maintained building with covered allocated parking and access to a communal courtyard for residents private use.

The apartment itself opens in to the open plan living dining room with double doors to a Juliet balcony. There is a modern fitted kitchen complete with integrated fridge freezer, washing machine, dishwasher, oven and hob. The hallway leads to the modern bathroom with matching suite of bath with shower over, WC and wash hand basin.

The main bedroom enjoys its own built in wardrobe space and more double doors with Juliet balcony, the second bedroom also with a storage cupboard and window area overlooking the rear.

Sold with no onward chain, the property offers an ideal first time buy or ready made investment. Accompanied viewings are available on request.

Lounge Diner

19' 9" x 15' 3" (6.02m x 4.65m)

Kitchen

8' 9" x 6' 11" (2.67m x 2.11m)

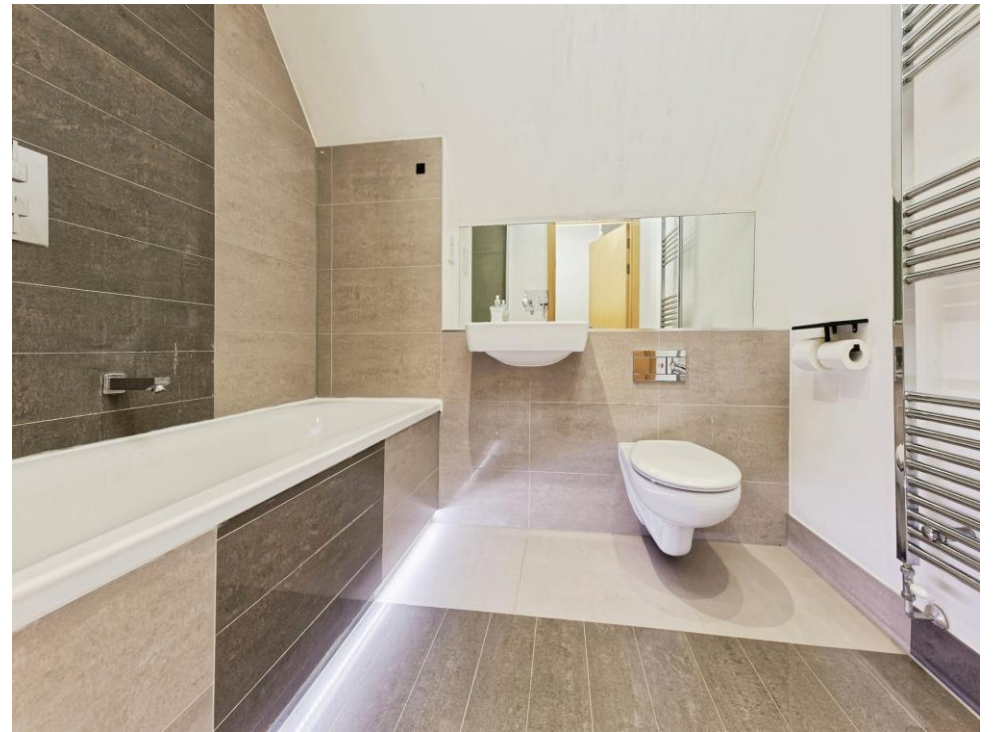
Bedroom One

Irregular Shaped Room 9' 5" max x 9' 11" max (2.87m max x 3.02m)

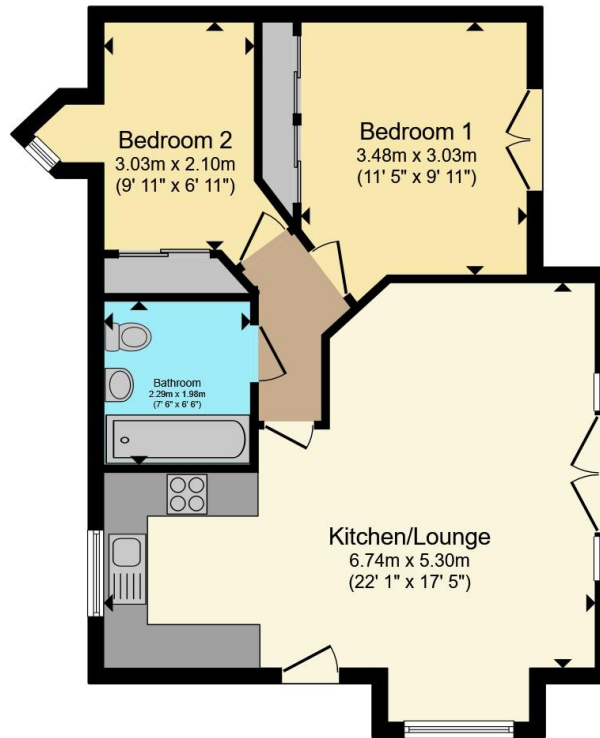
Bedroom Two

Irregular Shaped Room 11' 6" max x 9' max (3.51m max x 2.74m)









Total floor area 58.5 m² (630 sq.ft.) approx

This floor plan is for illustrative purposes only. It is not drawn to scale. Any measurements, floor areas (including any total floor area), openings and orientation are approximate. No details are guaranteed, they cannot be relied upon for any purpose and they do not form part of any agreement. No liability is taken for any error, omission or misstatement. A party must rely upon its own inspection(s). Powered by www.propertybox.io



To view this property please contact Connells on

T 01227 764 720
E canterbury@connells.co.uk

29-30 Watling Street
 CANTERBURY CT1 2UD

EPC Rating:
 Awaited

Council Tax
 Band: C

Service Charge:
 1200.00

Ground Rent:
 300.00

Tenure: Leasehold

view this property online connells.co.uk/Property/CBY407099

This is a Leasehold property. We are awaiting further details about the Term of the lease. For further information please contact the branch. Please note additional fees could be incurred for items such as Leasehold packs.



1. MONEY LAUNDERING REGULATIONS Intending purchasers will be asked to produce identification documentation at a later stage and we would ask for your co-operation in order that there will be no delay in agreeing the sale. 2. These particulars do not constitute part or all of an offer or contract. 3. The measurements indicated are supplied for guidance only and as such must be considered incorrect. Potential buyers are advised to recheck measurements before committing to any expense. 4. We have not tested any apparatus, equipment, fixtures, fittings or services and it is in the buyers interest to check the working condition of any appliances.

Connells Residential is registered in England and Wales under company number 1489613, Registered Office is Cumbria House, 16-20 Hockliffe Street, Leighton Buzzard, Bedfordshire, LU7 1GN. VAT Registration Number is 500 2481 05.

See all our properties at www.connells.co.uk | www.rightmove.co.uk | www.zoopla.co.uk

Property Ref: CBY407099 - 0002