



Compton Road, N1

£1,250,000

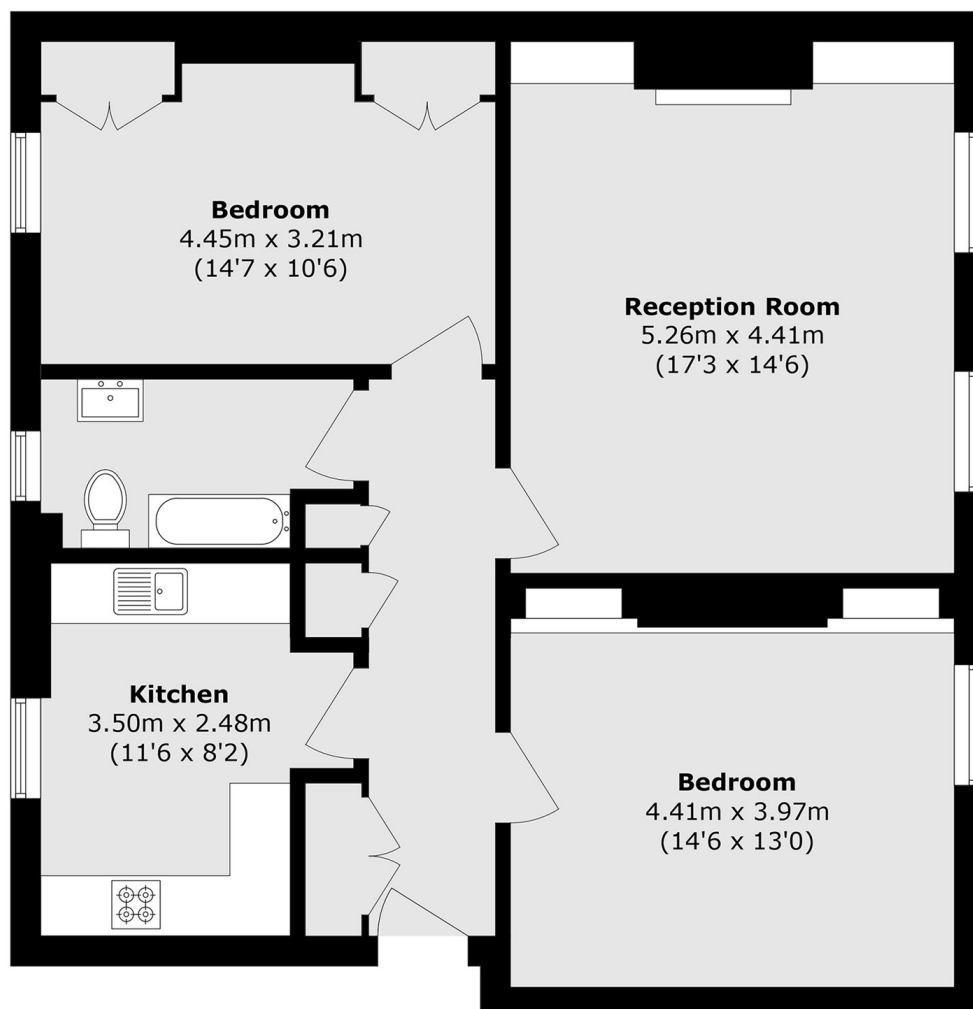
Set within a picturesque terrace of Grade II listed, Georgian houses in Canonbury. This two bedroom home is situated on the raised ground floor, with high ceilings and period features throughout. Other benefits include a communal garden, double glazed sash windows and a share of the freehold.

Compton Road is a prime residential street in the heart of Canonbury. Highbury & Islington Station (Victoria line, London Overground and National Rail) provides excellent transport links as well as numerous bus routes from Highbury Corner providing links to the City, West End and beyond. Upper Street is a short walk away with an array of cafés, independent shops, restaurants and bars.

Features

- Two Bedrooms
- Raised Ground Floor
- Desirable Location
- Communal Garden
- Bike Storage
- Grade II Listed
- Share Of Freehold

Compton Road, London, N1



Total area (approx.): 83.1 sq. m (894.5 sq. ft)