

Hallam Street, W1W

£1,038 Per week

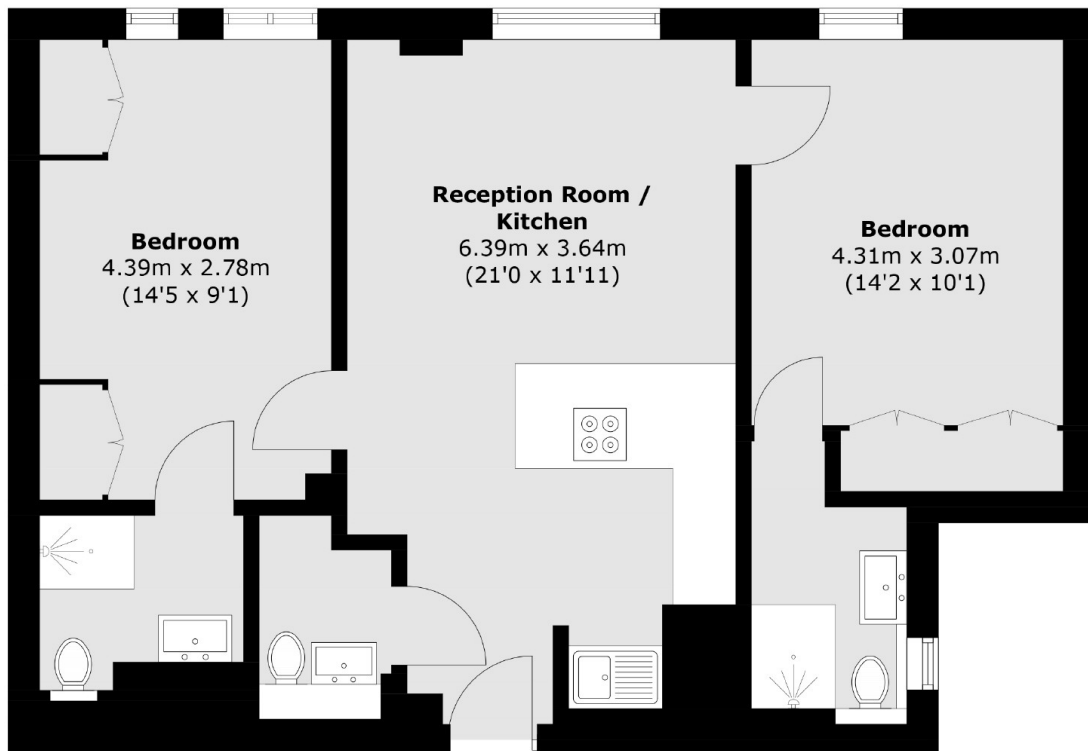
A beautifully refurbished two bedroom apartment on the third floor of a portered building close to Regent's Park. The flat has an open-plan kitchen/reception room, two double bedrooms, two shower rooms and a guest WC. Fully furnished.

Hallam Street is located between Portland Place and Great Portland Street. It is within easy access to Marylebone Village as well as the green open spaces of Regent's Park and all the amenities of the West End.

Features

Lift And Porter
Third Floor Apartment
Newly Refurbished
Kitchen/Reception
Two Double Bedrooms
Fully Furnished

Hallam Street,
London, W1W



Total area (approx.): 59.8 sq. m (643.7 sq. ft)

Dexters

Marylebone
53-55 Weymouth Street
London
W1G 8NJ
Lettings
0207 224 5545

Energy Rating: C. We aim to make our particulars both accurate and reliable. However they are not guaranteed; nor do they form part of an offer or contract. If you require clarification on any points then please contact us, especially if you're traveling some distance to view. Please note that appliances and heating systems have not been tested and therefore no warranties can be given as to their good working order.

 **RICS** | Regulated
Estate Agent
and Letting Agent

[dexters.co.uk](https://www.dexters.co.uk)