



ZENOBIA MANSIONS

Queen's Club Gardens W14



ZENOBIA MANSIONS QUEEN'S CLUB GARDENS W14

A light-filled two-bedroom, two-bathroom mansion flat moments from The Queen's Club, with residents enjoying priority access to tickets for the prestigious HSBC Championships.



Local Authority: London Borough of Hammersmith and Fulham

Council Tax band: E

Tenure: Share of freehold, plus leasehold, approximately 999 years remaining*

Ground rent: £75.00 per annum, reviewed annually, next review due 2026

Service charge: £4,503 per annum, reviewed annually, next review due 2026

Guide price: £825,000



STYLISH OPEN-PLAN LIVING

Situated on the second floor of Zenobia Mansions, this beautifully presented apartment offers well-proportioned accommodation of approximately 847 sq ft. The property balances the classic proportions of a Victorian mansion block with a contemporary layout and finish. The façade of Zenobia Mansions was recently refurbished in 2023 by Queens Club Gardens.

The apartment was completely renovated in 2017, making it more suitable for modern living with an open plan kitchen and sitting room. The generous kitchen/sitting room has integrated storage and plenty of natural light providing an excellent space for both everyday living and entertaining. The modern kitchen is thoughtfully designed with sleek cabinetry and integrated appliances, perfectly complementing the open plan feel of the room.

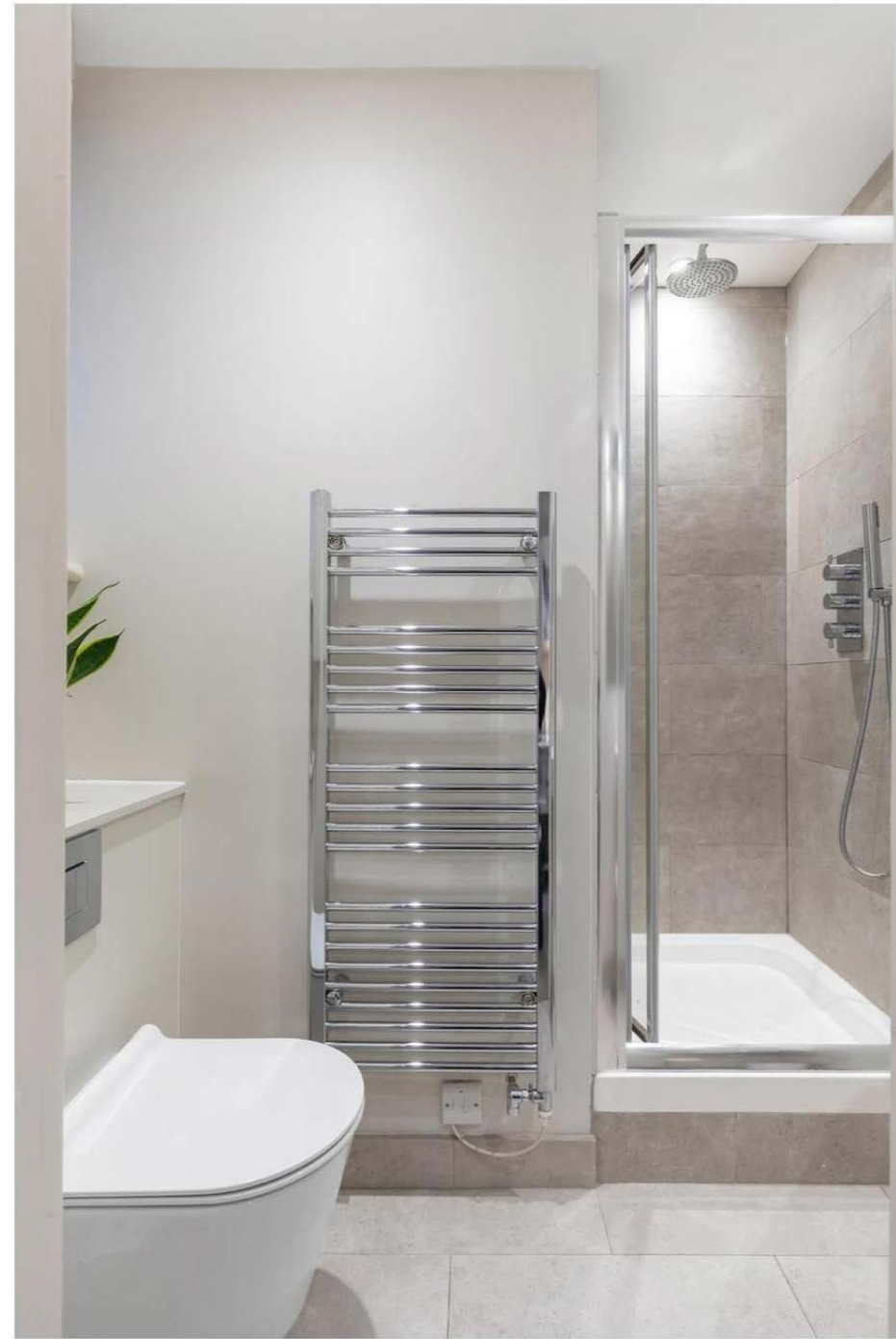


WELL-PROPORTIONED LIGHT-FILLED BEDROOMS

The two well-proportioned bedrooms are both filled with natural light and feature large built-in wardrobes. The principle bedroom has an en suite bathroom and, during the renovation, an additional bathroom was created for the second bedroom. A second bathroom is unusual in apartments at Queens Club Gardens.

The apartment features high ceilings and period detailing, typical of a Victorian mansion block, further enhancing the sense of space and character throughout the apartment.

Zenobia Mansions is set within a beautiful shared private garden featuring lawns and seating areas, all of which are carefully maintained. Thoughtful planting provides year round interest with traditional seasonal bedding in keeping with the Victorian heritage of the building. Residents also enjoy access to the estate's two tennis courts which were refurbished in 2024. The property forms part of a well managed, portered estate, with the estate office conveniently located next to the entrance of Zenobia Mansions.





A DISTINGUISHED ADDRESS CLOSE TO THE QUEEN'S CLUB

Zenobia Mansions is ideally situated on Queen's Club Gardens, just moments from the renowned Queen's Club Tennis Grounds and the surrounding open green spaces. The area is exceptionally well connected, with Barons Court and West Kensington Underground stations both located within 0.5 miles, offering access to the Piccadilly and District lines and providing links to the City, West End and Heathrow Airport. For those travelling by car, there is also convenient access out of London via the nearby A4. The property is well placed for healthcare services, with NHS Charing Cross Hospital, including A&E facilities, approximately 0.5 miles away, while the NHS Cassidy Road Medical Centre and NHS dentist at 355 North End Road are also close at hand.

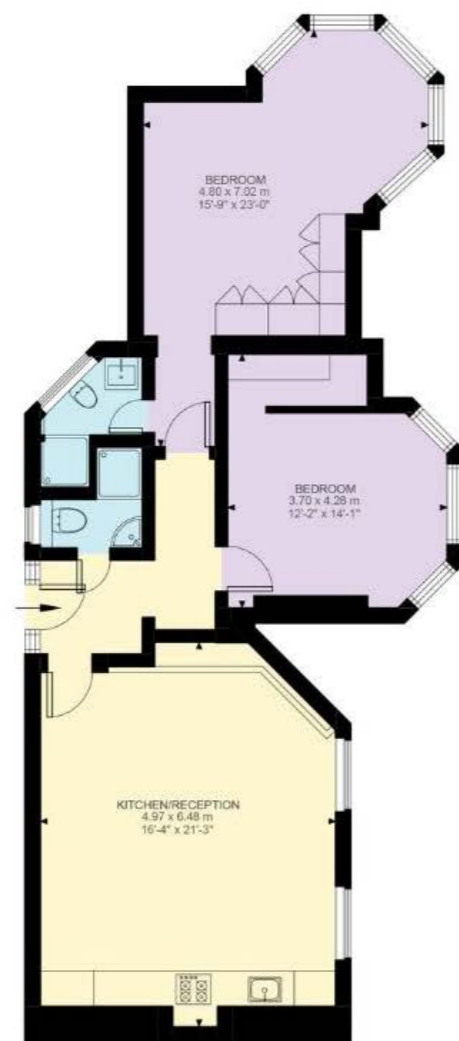
A diverse selection of cafés, restaurants and shops can be found along North End Road and Fulham Palace Road. The area is also well served by popular local pubs such as The Curtains Up and The Pear Tree, while Carbon Kopi, a highly regarded independent coffee shop, is just 0.3 miles away. The Thames River Path lies approximately 0.8 miles from the property, offering scenic riverside walks, The Crabtree pub, and the world famous River Café.

Please note:

The Land Registry title has not yet been updated to reflect the recently agreed lease extension to 999 years.

Any references to timings and distances are approximate and have been provided for guidance only. They should not be relied upon as exact.





Second Floor
847 ft²

Approximate Gross Internal Area = 78.72 sq m / 847 sq ft

This plan is for layout guidance only. Not drawn to scale unless stated. Windows and door openings are approximate. Whilst every care is taken in the preparation of this plan, please check all dimensions, shapes and compass bearings before making any decisions reliant upon them. (ID767266)



Lewin Craig-Corbett

+44 2077512406

lewin.craig-corbett@knightfrank.com

Knight Frank Fulham

203 New Kings Road

Fulham SW6 4SR

knightfrank.co.uk

Your partners in property

1. Particulars: These particulars are not an offer or contract, nor part of one. You should not rely on statements given by Knight Frank in the particulars, by word of mouth or in writing ("information") as being factually accurate about the property, its condition or its value. Neither Knight Frank nor any joint agent has any authority to make any representations about the property, and accordingly any information given is entirely without responsibility on the part of Knight Frank. 2. Material Information: Please note that the material information is provided to Knight Frank by third parties and is provided here as a guide only. While Knight Frank has taken steps to verify this information, we advise you to confirm the details of any such material information prior to any offer being submitted. If we are informed of changes to this information by the seller or another third party, we will use reasonable endeavours to update this as soon as practical. 3. Photos, Videos etc: The photographs, property videos and virtual viewings etc. show only certain parts of the property as they appeared at the time they were taken. Areas, measurements and distances given are approximate only. 4. Regulations etc: Any reference to alterations, or use of, any part of the property does not mean that any necessary planning, building regulations or other consent has been obtained. A buyer must find out by inspection or in other ways that these matters have been properly dealt with and that all information is correct. 5. Fixtures and fittings: A list of the fitted carpets, curtains, light fittings and other items fixed to the property which are included in the sale (or may be available by separate negotiation) will be provided by the Seller's Solicitors. 6. VAT: The VAT position relating to the property may change without notice. 7. To find out how we process Personal Data, please refer to our Group Privacy Statement and other notices at <https://www.knightfrank.com/legals/privacy-statement>.

Particulars dated April 2026. Photographs and videos dated January 2024 & April 2026 (external photos). All information is correct at the time of going to print. Knight Frank is the trading name of Knight Frank LLP. Knight Frank LLP is a limited liability partnership registered in England and Wales with registered number OC305934. Our registered office is at 55 Baker Street, London W1U 8AN. We use the term "partner" to refer to a member of Knight Frank LLP, or an employee or consultant. A list of members names of Knight Frank LLP may be inspected at our registered office. If you do not want us to contact you further about our services then please contact us by either calling 020 3544 0692, email to marketing.help@knightfrank.com or post to our UK Residential Marketing Manager at our registered office (above) providing your name and address.

