



**Price**  
**£525,000**

**Freehold**

3x  1x  1x 

**Hampton Road,  
Chingford, E4**

**OVER 60?**

Secure this property  
for up to **59% less!**

 **DOUGLAS  
ALLEN**  
Helping you move forwards



## Main features

- Sizeable Three Bedroom Terraced
- Off road parking
- Large rear garden
- Potential to extend into the rear and loft (STPP)
- An array of local amenities close by in Chingford Mount

## Accommodation

### GROUND FLOOR

- Lounge: 13'0 x 12'2 (3.97m x 3.71m)
- Dining Room: 14'5 x 11'2 (4.40m x 3.41m)
- Kitchen: 8'4 x 7'8 (2.54m x 2.34m)
- Utility Room: 13'4 x 7'6 at widest point (4.07m x 2.29m)

### FIRST FLOOR

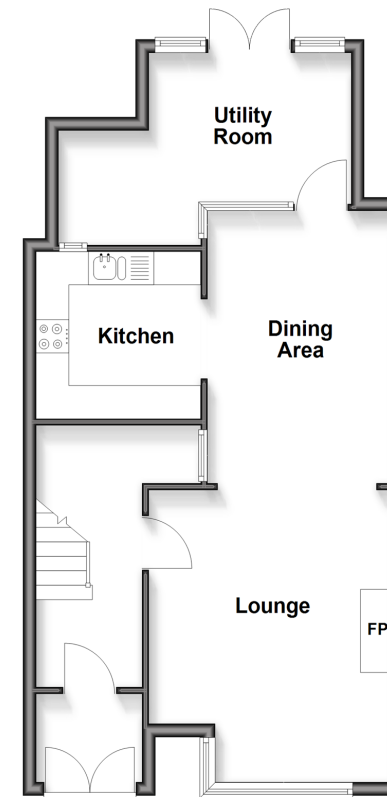
- Bedroom 1: 13'9 x 9'6 (4.19m x 2.90m)
- Bedroom 2: 11'3 x 9'9 (3.43m x 2.97m)
- Bedroom 3: 7'8 x 6'6 (2.34m x 1.98m)
- Family Bathroom

### OUTSIDE

- Driveway
- Rear Garden

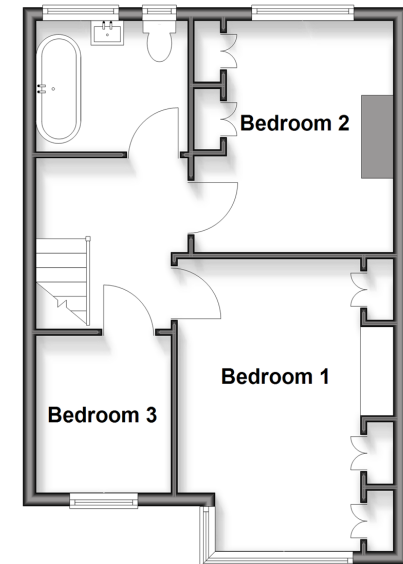
### Ground Floor

Approx. 54.7 sq. metres (589.1 sq. feet)



### First Floor

Approx. 41.1 sq. metres (442.9 sq. feet)



Call Chingford - 020 8524 6331 ■ [douglasallen.co.uk](http://douglasallen.co.uk)

- If buying to rent, please check if Local Authority licensing schemes apply before proceeding
- Through a Homewise Home For Life Plan people aged 60+ can secure this property for up to 59% less, by purchasing a Lifetime Lease



51013527/20260509/KS/RUM