



Ravens Close, KT6

£465,000

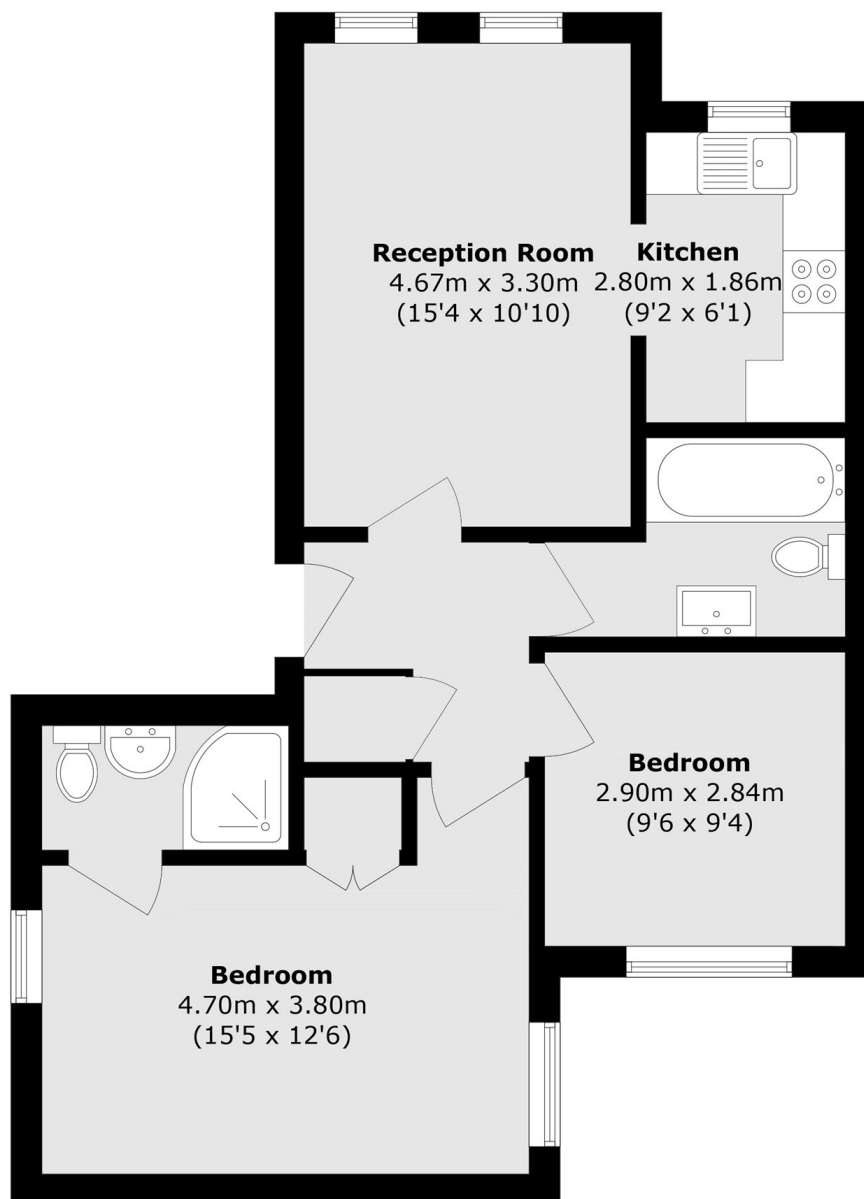
A spacious and light-filled top floor apartment offering two generous double bedrooms and well-balanced accommodation throughout. The property features a large reception room, a separate fitted kitchen, and a modern family bathroom. The master bedroom benefits from its own en-suite shower room, while the apartment is presented in good condition throughout. Further benefits include attractive communal gardens and the advantage of no onward chain.

Ravens Close is a peaceful cul-de-sac, just around the corner from the vibrant Maple Road and Surbiton High Street with its mainline train station offering fast links to Waterloo in 16 minute's

Features

- Top Floor
- Modern Kitchen
- Two Double Bedrooms
- Two Bathrooms
- Allocated Parking
- Central Location

Ravens Close, Surbiton, KT6



Total area (approx.): 59.2 sq. m (637.2 sq. ft)