



## FLAT 29, BELLE VUE COURT BELLE VUE GARDENS BRIGHTON, BN2 0AN

£1,600 PER MONTH

Property to be fully redecorated and recarpeted.

Two double bedroom, third floor, apartment with allocated parking space and amazing city views.

Belle Vue Court is a purpose-built development just moments from the Royal Sussex Hospital and seafront. This two bedroom apartment is well-presented throughout and resides on the third floor, benefiting from delightful views across the city and out to the sea in the west.

**Nicholas  
James**

SALES LETTINGS AUCTIONS





### Flat 29 Belle Vue Court

Approximate Gross Internal Area = 72.6 sq m / 781 sq ft

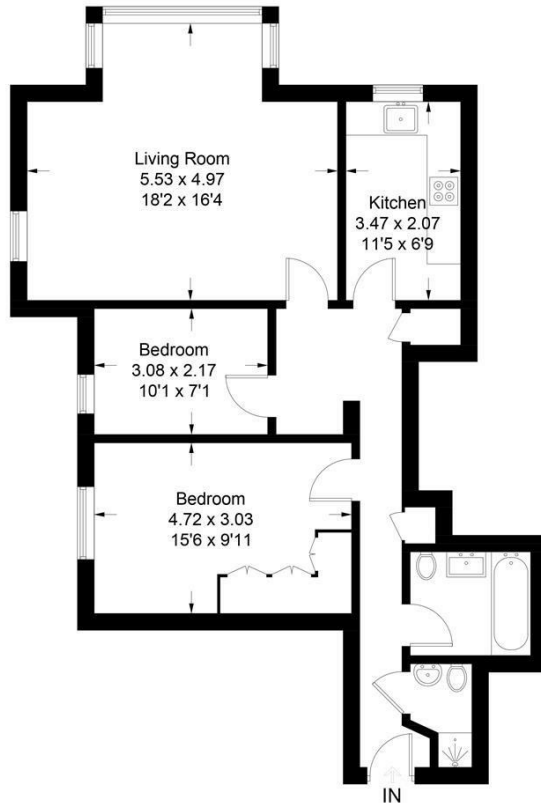


Illustration for identification purposes only, measurements are approximate, not to scale. Fourlabs.co © (ID1298627)



Energy Efficiency Rating		Current	Potential
Very energy efficient - lower running costs			
(92 plus) A			
(81-91) B			
(69-80) C		69	76
(55-68) D			
(39-54) E			
(21-38) F			
(1-20) G			
Not energy efficient - higher running costs			
<b>England &amp; Wales</b>		EU Directive 2002/91/EC	

Agents Note: Whilst every care has been taken to prepare these particulars, they are for guidance purposes only. All measurements are approximate and are for general guidance purposes only and whilst every care has been taken to ensure their accuracy, they should not be relied upon and potential buyers/tenants are advised to recheck the measurements

Hove Lettings  
 Ground Floor 8 The Drive  
 Hove  
 East Sussex  
 BN3 3JA

01273 917915  
 hello@nicholasjamesproperty.co.uk  
 www.nicholasjamesproperty.co.uk

**Nicholas  
 James**

SALES LETTINGS AUCTIONS