

Ashtons



Apartment 2 Castle Chambers 5 Clifford Street YO1 9RG

£1,050 PCM

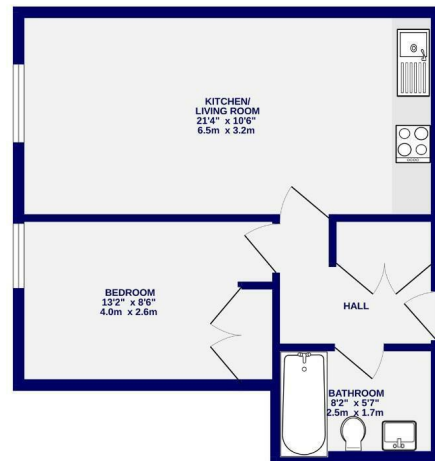


This one bedroom first floor apartment is located within this converted building, enjoying a superb position on Clifford Street, just moments from Clifford's Tower and King's Staith, with the city's vibrant amenities on its doorstep. The property is offered on a furnished basis and briefly comprises; Entrance hall with utility cupboard with washer/dryer. Bathroom suite with shower over the bath. Open plan living / kitchen. Kitchen includes integrated induction hob, oven, fridge/freezer and dishwasher. Double bedroom with fitted wardrobes  
Internal bike storage and lifts to all floors

Available 19th June

Deposit £1200 / EPC rating D / Council tax Band C

1ST FLOOR  
436 sq.ft. (40.5 sq.m.) approx.



TOTAL FLOOR AREA - 436 sq.ft. (40.5 sq.m.) approx.  
While every effort has been made to ensure the accuracy of the floorplan, some elements of rooms and any other areas are approximate. It is advised to visit the property with your agent for the exact floor plan and measurements. All rights reserved. © 2024. This plan is for illustrative purposes only and should not be used as a contract. For further details, please contact your agent. All specifications shown may vary without notice and are subject to change without notice.



Ashtons Lettings



01904 731404



lettings@ashtonsnet.com

