



DALES & PEAKS



## Nant Cottage St. Johns Road

Matlock Bath, Matlock, DE4 3PR

£325,000



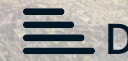
3



1



2



D



## Nant Cottage St. Johns Road

Matlock Bath, Matlock, DE4 3PR

A quaint 3 bedroom end terrace cottage, occupying a generous plot with beautifully presented gardens and views of the surrounding countryside. The property boasts 990 sqft of living accommodation over 2 storeys and features original period features throughout.

The ground floor comprises; Front aspect living room with log burning stove, formal dining room with the original quarry tiles, kitchen with flag stone flooring and access onto the rear, separate pantry room.

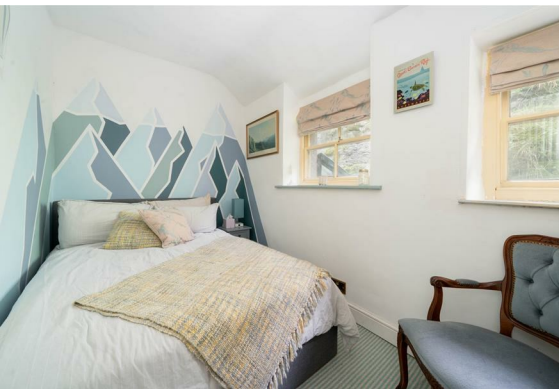
The first floor comprises; Two front aspect double bedrooms, one with a log burning stove and currently used as another reception room. Third bedroom and bathroom with walk in shower and double basin.

Please note: The furniture can be available by separate negotiation.

**Dales and Peaks ForwardMove**  
- Please read









Floor Plan



Viewing

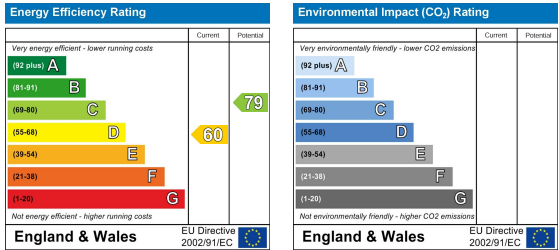
Please contact our Chesterfield Office on 01246 567540 if you wish to arrange a viewing appointment for this property or require further information.

These particulars, whilst believed to be accurate are set out as a general outline only for guidance and do not constitute any part of an offer or contract. Intending purchasers should not rely on them as statements of representation of fact, but must satisfy themselves by inspection or otherwise as to their accuracy. No person in this firms employment has the authority to make or give any representation or warranty in respect of the property.

Area Map



Energy Efficiency Graph



131 Chatsworth Road, Chesterfield, Derbyshire, S40 2AP  
T: 01246 567540



E: info@dalesandpeaks.co.uk  
www.dalesandpeaks.co.uk