

An aerial photograph of a coastal city at sunset. The sky is a mix of blue and orange, with wispy clouds. In the background, there are mountains. The city below is densely packed with buildings and greenery. The text "18 INDIVIDUALLY DESIGNED SUSTAINABLE VILLAS" is overlaid in white, bold, sans-serif font in the center of the image.

18 INDIVIDUALLY DESIGNED SUSTAINABLE VILLAS

VILLA
N°14

VILLA Nº14

Villa Nº14 sits on a south-southwest facing plot and enjoys magnificent views straight across the Mediterranean. The carefully thought-out orientation of the villa ensures uninterrupted sea views and complete privacy. The villa has ample terraces which increases the living space and makes the most of the fabulous Marbella climate. The landscaped garden and large plot can easily accommodate an organic vegetable garden if so desired. In key parts of the villa the windows disappear into the walls, framing the undisturbed, panoramic views of the idyllic natural surroundings. There are four spacious ensuite bedrooms, with three having their own terrace. Built over three floors with a 200 metre squared basement, this is a perfect family home.





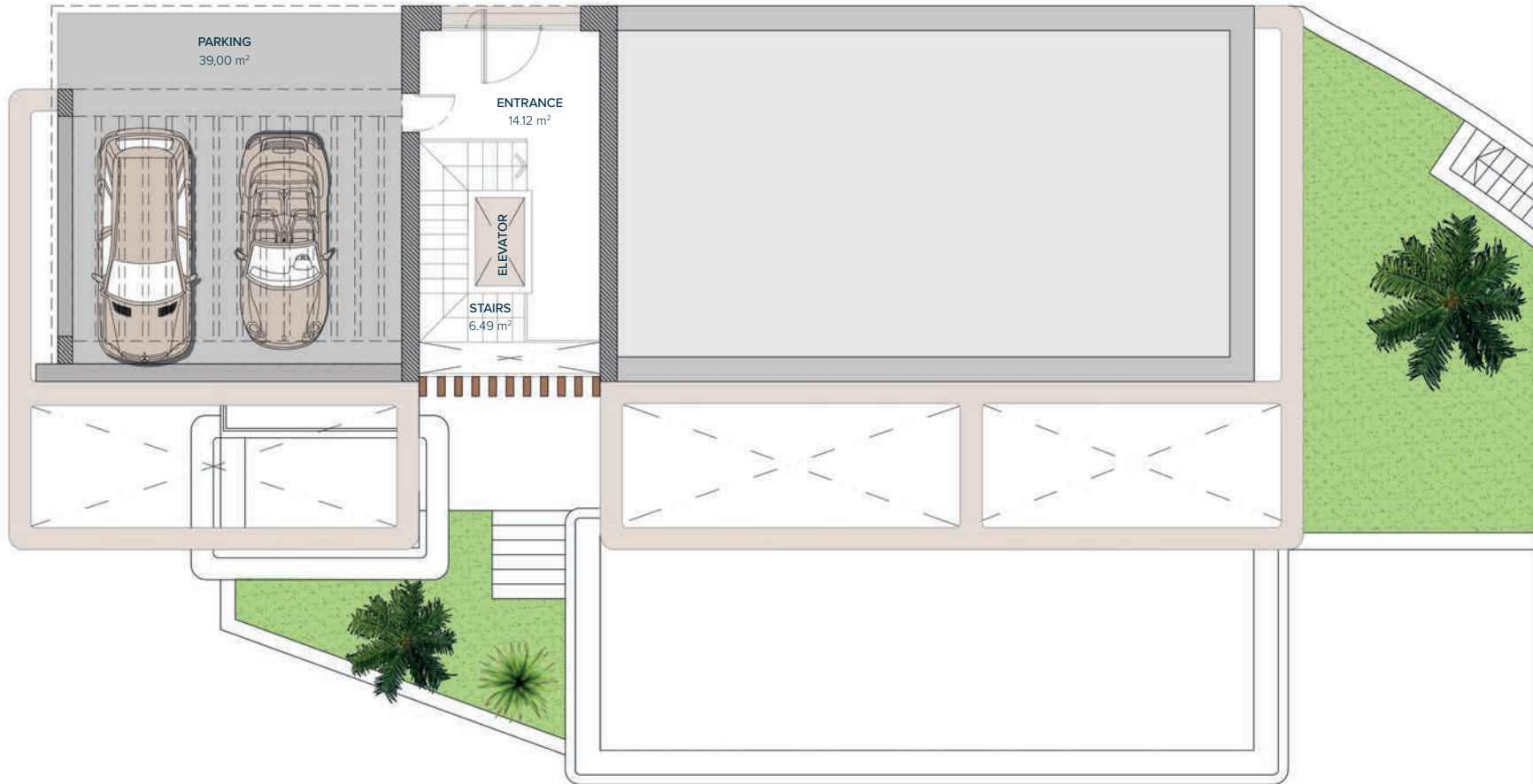
VILLA Nº14

SECOND FLOOR	20,94 m ²
FIRST FLOOR	144,89 m ²
GROUND FLOOR	111,36 m ²
BASEMENT	259,10 m ²
TOTAL	535,98 m²

TERRACES	52,47 m ²
PERGOLAS	48,69 m ²
CARPORT	41,44 m ²
COMUN AREAS	8,70 m ²
TOTAL	687,28 m²

PLOT	5.281,00 m²
GARDEN	93,12 m ²
SWIMMING POOL	56,45 m ²
TOTAL USEFUL AREA	492,66 m²
DECREE 218/2005	

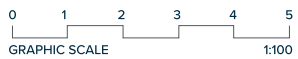
These images are not contractual but only for illustrative purposes. The images are subject to technical, legal or commercial modifications approved by the project management or the competent authority. The 3D images corresponding to the facades, common elements, and the rest of the spaces are merely indicative and will be subject to verification or Modification in the technical projects. The furniture of the 3D images is not included and the equipment of the villas will be indicated in the corresponding building and quality specifications. The energy certification corresponds with the one established in the project in process. All the information and documentation will be provided according to the terms established in the Royal Decree 515/1989 and in the rest of the autonomous or state regulations currently in force that could complement the Mentioned Decree.



VILLA Nº14

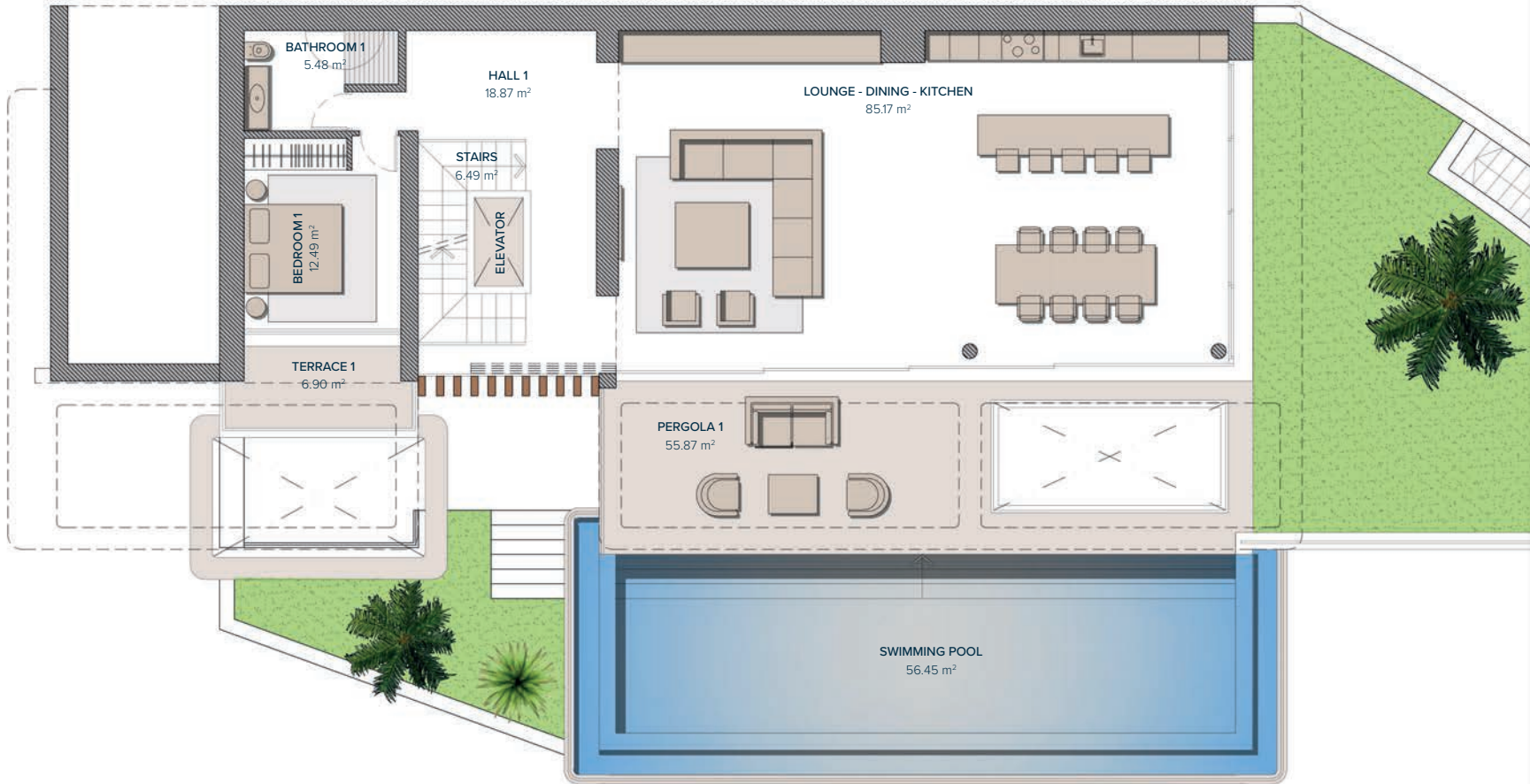
SECOND FLOOR

ACCESS	14,12 m ²
STAIRS	6,49 m ²
TOTAL	20,61 m²
PARKING (PERGOLA)	39,00 m ²
TOTAL	39,00 m²



Entrance	2
	1
	0
	-1

These images are not contractual but only for illustrative purposes. The images are subject to technical, legal or commercial modifications approved by the project management or the competent authority. The 3D images corresponding to the facades, common elements, and the rest of the spaces are merely indicative and will be subject to verification or Modification in the technical projects. The furniture of the 3D images is not included and the equipment of the villas will be indicated in the corresponding building and quality specifications. The energy certification corresponds with the one established in the project in process. All the information and documentation will be provided according to the terms established in the Royal Decree 515/1989 and in the rest of the autonomous or state regulations currently in force that could complement the Mentioned Decree.



VILLA Nº14

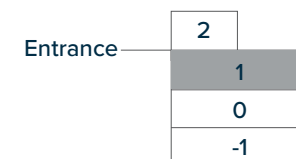
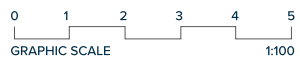
FIRST FLOOR

LIVING AREA

HALL 1	18,87 m ²
STAIRS	6,49 m ²
LOUNGE-DINING - KITCHEN	85,17 m ²
BATHROOM 1	5,48 m ²
BEDROOM 1	12,49 m ²
TOTAL	128,50 m²

PERGOLAS & TERRACES

TERRACE 1	6,90 m ²
PERGOLA 1	55,87 m ²
TOTAL	62,77 m²



These images are not contractual but only for illustrative purposes. The images are subject to technical, legal or commercial modifications approved by the project management or the competent authority. The 3D images corresponding to the facades, common elements, and the rest of the spaces are merely indicative and will be subject to verification or Modification in the technical projects. The furniture of the 3D images is not included and the equipment of the villas will be indicated in the corresponding building and quality specifications. The energy certification corresponds with the one established in the project in process. All the information and documentation will be provided according to the terms established in the Royal Decree 515/1989 and in the rest of the autonomous or state regulations currently in force that could complement the Mentioned Decree.



VILLA Nº14

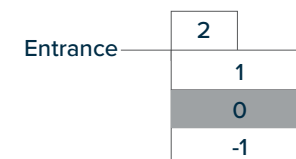
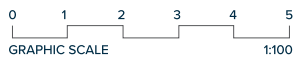
GROUND FLOOR

BEDROOMS

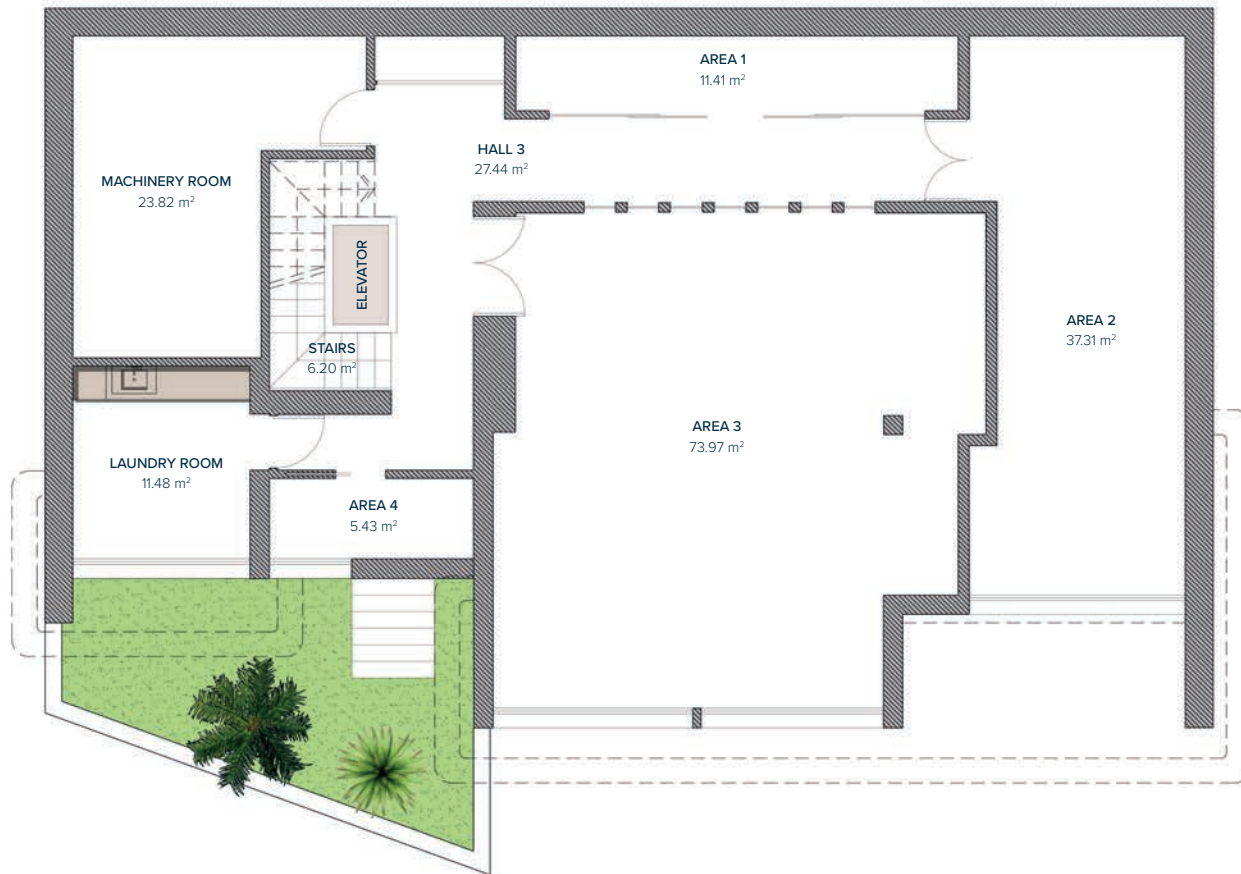
HALL 2	15,55 m ²
STAIRS	8,82 m ²
BATHROOM 2	4,67 m ²
BEDROOM 2	15,61 m ²
BATHROOM 3	4,68 m ²
BEDROOM 3	16,32 m ²
BATHROOM 4	4,99 m ²
BEDROOM 4	19,21 m ²
TOTAL	89,85 m²

PERGOLAS & TERRACES

PERGOLA 2	7,36 m ²
TERRACE 2	9,61 m ²
TERRACE 3	18,02 m ²
POOL MACHINE ROOM	110,05 m ²
TOTAL	34,99 m²



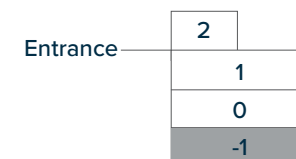
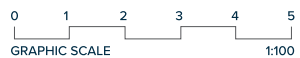
These images are not contractual but only for illustrative purposes. The images are subject to technical, legal or commercial modifications approved by the project management or the competent authority. The 3D images corresponding to the facades, common elements, and the rest of the spaces are merely indicative and will be subject to verification or Modification in the technical projects. The furniture of the 3D images is not included and the equipment of the villas will be indicated in the corresponding building and quality specifications. The energy certification corresponds with the one established in the project in process. All the information and documentation will be provided according to the terms established in the Royal Decree 515/1989 and in the rest of the autonomous or state regulations currently in force that could complement the Mentioned Decree.



VILLA Nº14

BASEMENT

HALL 3	27,44 m ²
STAIRS	6,20 m ²
AREA 1	11,41 m ²
AREA 2	37,31 m ²
AREA 3	73,97 m ²
AREA 4	5,43 m ²
MACHINERY ROOM	23,82 m ²
LAUNDRY ROOM	11,48 m ²
PATIO (ELEVATOR)	1,80 m ²
TOTAL	198,86 m²



These images are not contractual but only for illustrative purposes. The images are subject to technical, legal or commercial modifications approved by the project management or the competent authority. The 3D images corresponding to the facades, common elements, and the rest of the spaces are merely indicative and will be subject to verification or Modification in the technical projects. The furniture of the 3D images is not included and the equipment of the villas will be indicated in the corresponding building and quality specifications. The energy certification corresponds with the one established in the project in process. All the information and documentation will be provided according to the terms established in the Royal Decree 515/1989 and in the rest of the autonomous or state regulations currently in force that could complement the Mentioned Decree.

VILLA Nº14

