



Guernsey Way, Littleport CB6 1GD

welcome to

Guernsey Way, Littleport

Offering approximately 1834 sq ft of accommodation a well presented and extended family home located within a popular residential area of Littleport with five bedrooms, three en-suites and two reception rooms - NO ONWARD CHAIN.

Entrance Hall

With radiator, stairs leading to first floor, double glazed window to side aspect and doors to:

Cloakroom/W.C.

Fitted with a suite comprising low level w.c, corner wash hand basin with mixer tap over, radiator and double glazed window to side.

Kitchen

Fitted with a modern range of base units and drawers with work surfaces over to two sides, matching wall units, inset one and a half bowl sink and drainer unit with mixer tap over, built in under oven with gas hob and extractor over, spaces for fridge/freezer, washing machine and dishwasher, radiator and double glazed window to front aspect.

Living/Dining Room

With radiator, storage cupboard, double glazed window to playroom/reception room and double doors opening to:

Playroom/Reception Room

With radiator, double glazed windows to rear and side aspects, three sky lights, internal door to garage and double doors to rear garden.

Bedroom One

With radiator, fitted double wardrobe, double glazed window to front aspect and door to:

En-Suite Shower Room

Fitted with a suite comprising shower enclosure, low level w.c, pedestal wash hand basin with mixer tap over, towel ladder radiator and double glazed window to rear.

Bedroom Two

With radiator, fitted double wardrobe, double glazed window to front aspect and door to:

En-Suite Shower Room

Fitted with a suite comprising shower enclosure, low level w.c, pedestal wash hand basin with mixer tap over, towel ladder radiator and extractor.





Bedroom Four

With radiator and double glazed window to rear aspect.

Bedroom Five

With radiator and double glazed window to front aspect.

Bathroom

Fitted with a suite comprising panel enclosed bath with mixer tap and shower attachment over, low level w.c, pedestal wash hand basin with mixer tap over, towel ladder radiator and double glazed window to rear.

Second Floor Landing

With door to:

Bedroom Three

With radiator, restricted head height, storage alcoves, four sky lights and door to:

En-Suite Shower Room

Fitted with a suite comprising shower enclosure, low level w.c, vanity wash hand basin with mixer tap over, towel ladder radiator, restricted head height and sky light.

Outside

To the front of the property there is a shallow graveled garden with a driveway to the right of the property leading to the attached garage, The rear garden has an initial patio area with the remainder being laid to artificial grass and fully enclosed by fencing.



view this property online williamhbrown.co.uk/Property/ELY110234



welcome to

Guernsey Way, Littleport

- No Onward Chain
- Extended Family Home
- Five Bedrooms
- Three En-suite Shower Rooms
- Playroom/Reception Room

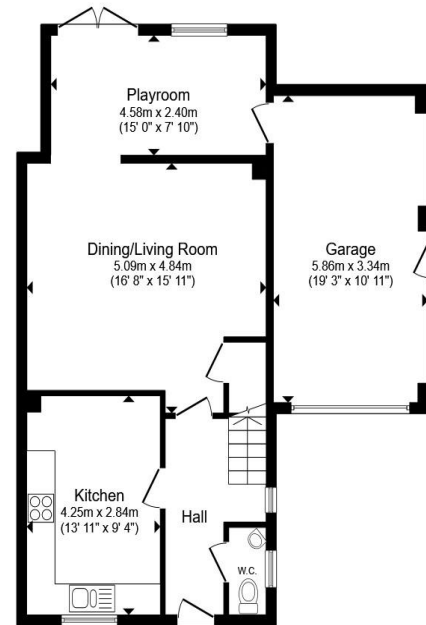
Tenure: Freehold

EPC Rating: C

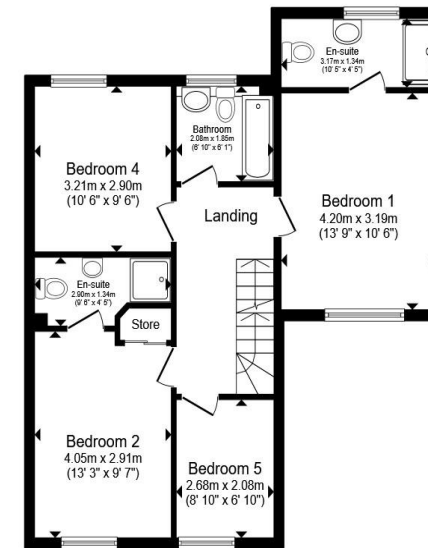
Council Tax Band: B

guide price

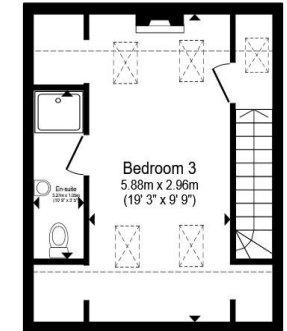
£365,000



Ground Floor



First Floor



Second Floor

Total floor area 170.4 m² (1,834 sq.ft.) approx

This floor plan is for illustrative purposes only. It is not drawn to scale. Any measurements, floor areas (including any total floor area), openings and orientation are approximate. No details are guaranteed, they cannot be relied upon for any purpose and they do not form part of any agreement. No liability is taken for any error, omission or misstatement. A party must rely upon its own inspection(s). Powered by www.propertybox.io



[view this property online](http://williamhbrown.co.uk/Property/ELY110234) williamhbrown.co.uk/Property/ELY110234



Property Ref:
ELY110234 - 0002

1. MONEY LAUNDERING REGULATIONS Intending purchasers will be asked to produce identification documentation at a later stage and we would ask for your co-operation in order that there is no delay in agreeing the sale. 2. These particulars do not constitute part or all of an offer or contract. 3. The measurements indicated are supplied for guidance only and as such must be considered incorrect. Potential buyers are advised to recheck measurements before committing to any expense. 4. We have not tested any apparatus, equipment, fixtures or services and it is in the buyers interest to check the working condition of any appliances. 5. Where an EPC, or a Home Report (Scotland only) is held for this property, it is available for inspection at the branch by appointment. If you require a printed version of a Home Report, you will need to pay a reasonable production charge reflecting printing and other costs. 6. We are not able to offer an opinion either written or verbal on the content of these reports and this must be obtained from your legal representative. 7. Whilst we take care in preparing these reports, a buyer should ensure that his/her legal representative confirms as soon as possible all matters relating to title including the extent and boundaries of the property and other important matters before exchange of contracts.

William H Brown is a trading name of Sequence (UK) Limited which is registered in England and Wales under company number 4268443, Registered Office is Cumbria House, 16-20 Hockliffe Street, Leighton Buzzard, Bedfordshire, LU7 1GN. VAT Registration Number is 500 2481 05.


william h brown



01353 663311



ely@williamhbrown.co.uk



6 Forehill, ELY, Cambridgeshire, CB7 4AF



williamhbrown.co.uk