



8 Sandy Crescent, Great Wakering, Essex, SS3 0FN

Three Bedroom Semi-Detached Home / Guide Price: £400,000 - £425,000 / Tel: 01702 207720



*a day spent with you
is my favourite day*

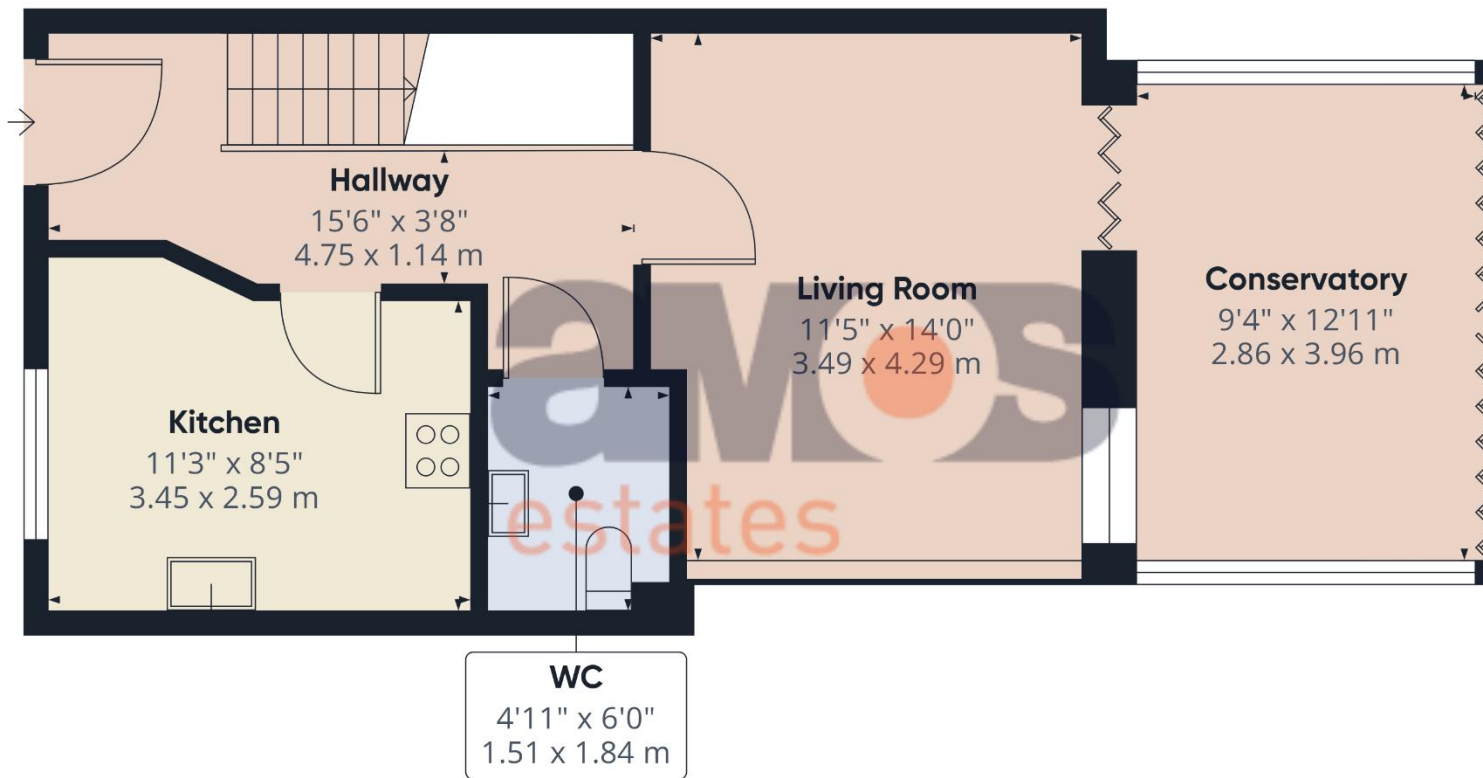


This contemporary **three-bedroom** semi-detached house combines stylish décor with practical family living space throughout. The welcoming entrance hall immediately sets the tone for the property. To the front of the home is a modern fitted kitchen featuring high-gloss units and integrated appliances. The hallway leads through to the bright and spacious living room, complete with bi-fold doors opening into the conservatory, creating an ideal space for both dining and relaxing. A convenient ground floor WC completes the downstairs accommodation. Upstairs, there are three well-proportioned bedrooms, with the main bedroom benefiting from a stylish en-suite shower room, while a modern three-piece family bathroom serves the remaining bedrooms. Externally, the rear garden is a generous size and features a sun patio area alongside a lawn, making it perfect for outdoor entertaining and family enjoyment. To the front, the property benefits from off-street parking for multiple vehicles.

The property is situated within the popular village of Great Wakering, close to local shops, schools and everyday amenities. Excellent road links provide easy access to Southend-on-Sea and surrounding areas, while nearby rail services offer connections into London, making the location ideal for families and commuters alike. Take a look at our **360' virtual tour!**

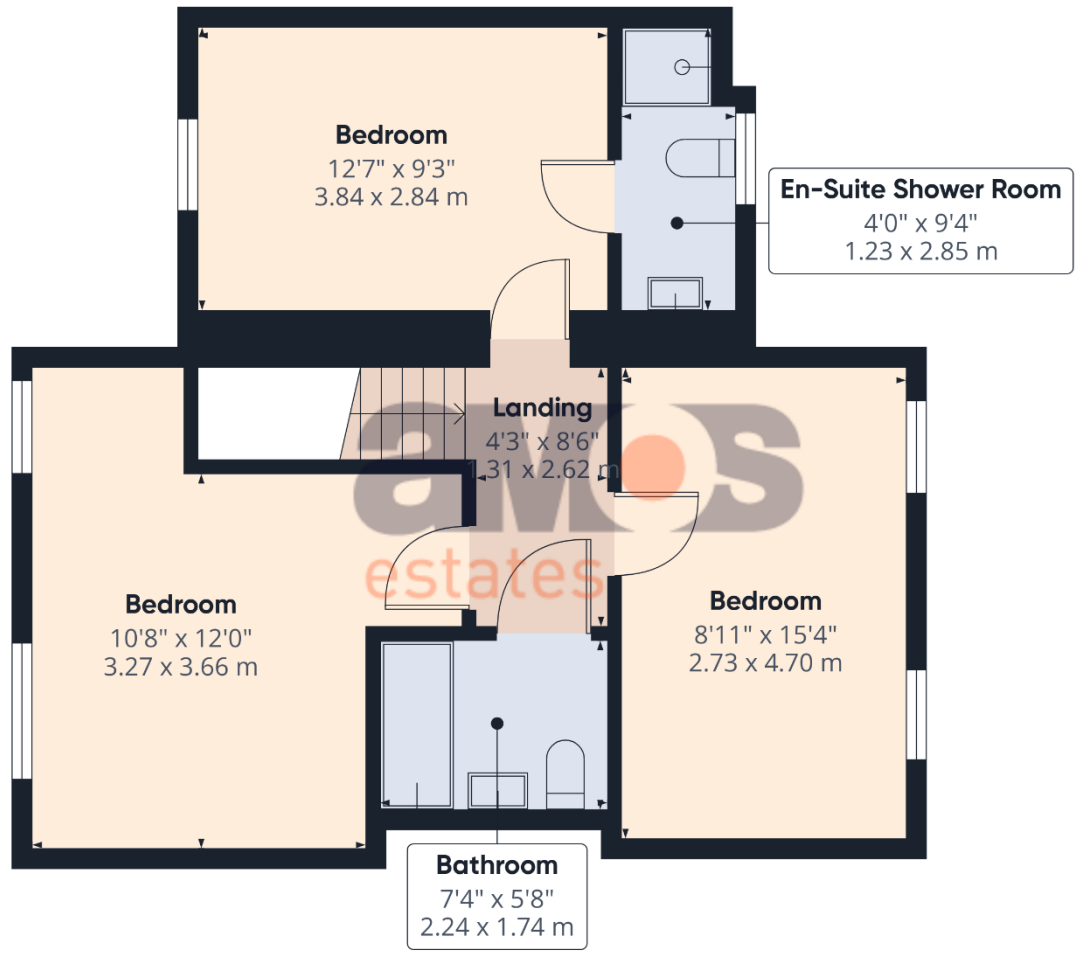
Find us on





Ground Floor





First Floor

**A space to
call home.**



Property Information

- / Contemporary three-bedroom semi-detached home
- / Stylishly presented throughout
- / Modern fitted kitchen with integrated appliances
- / Spacious living room with bi-fold doors
- / Contemporary three-piece family bathroom
- / Conservatory providing additional living and dining space
- / Ground floor cloakroom/WC
- / Main bedroom with modern en-suite shower room
- / Three-piece family bathroom serving the remaining bedrooms
- / Ample storage throughout.
- / Alarm system
- / Generous rear garden with patio and lawn
- / EPC Rating: B
- / Council Tax Band: D
- / Approx 1063 Sq Ft in Size
- / 360' Virtual Tour



Composite entrance door leading to:

Entrance Hall /

15'6 x 3'8

Plastered ceiling, wood effect floor covering, staircase to first floor living accommodation with fitted carpet and wood balustrade, ample understairs storage, radiator, power points, doors leading off:

Ground Floor Cloakroom /

6'0 x 4'11

Two-piece suite comprising pedestal hand wash basin with separate taps, low level w/c, plastered ceiling, tiled flooring, wall mounted vertical radiator.

Kitchen /

11'3 x 8'5

Fitted at both eye and base level in a range of glossy modern units with wood roll working surface over, integrated appliances such as oven and grill, four ring gas hob with extractor fan above and dishwasher, space for washing machine and Americans style fridge/freezer, 1.5 stainless steel sink unit with mixer tap and drainer, double glazed window to front aspect, plastered ceiling with integrated spotlights, tiled flooring and part tiled walls, radiator, power points.

Living Room /

14'0 x 11'5

Bi-fold shutters to conservatory, wood effect floor covering, plastered ceiling, built in cupboards and shelving, radiator, power points.

Conservatory /

12'11 x 9'4

Double glazed windows to rear and side aspect, double glazed bi-fold doors to rear garden, wood effect floor covering, space for dining table and sofa, power points.





Landing /

8'6 x 4'3

Plastered ceiling, fitted carpet, loft access (fully boarded and fitted ladder), power points, doors leading off:

Bathroom /

7'4 x 5'8

Three-piece suite comprising integrated bath with mixer tap and fitted shower unit with safety glass, vanity unit with sink top and mixer tap, low level w/c, plastered ceiling with integrated spotlights, wood effect floor covering, heated towel rail, extractor fan.

Bedroom One /

12'7 x 9'3

Double glazed window to front aspect, plastered ceiling, fitted carpet, built in wardrobes, loft access, radiator, power points, door to:

En-Suite Shower Room /

9'4 x 4'0

Three piece suite comprising pedestal hand wash basin with mixer tap and storage surround, shower cubicle with fitted shower unit, low level w/c, double glazed window to rear aspect, plastered ceiling with integrated spotlights, tiled flooring, chrome heated towel rail, shaver socket.

Bedroom Two /

15'4 x 8'11

Double glazed windows to front aspect, plastered ceiling, fitted carpet, radiator, power points.

Bedroom Three /

12'0 x 10'8

Double glazed window to rear aspect, plastered ceiling, fitted carpet, built in office/dressing area, built in wardrobes, radiator, power points.





Rear Garden /

Sun patio to immediate rear and side of property with remaining laid to lawn, bark area, wooden shed, side gate providing front access, water tap.

Front Garden /

Carport providing parking for two vehicles, EV charging point, wooden gate to entrance.



We recommend our customers use our panel of Conveyancers/Solicitors. It is your decision whether you choose to deal with our recommendation, and you are under no obligation to do so. You should know that we may receive a referral fee of £150 to £200 per transaction from them.

Should you arrange a Mortgage through our recommended mortgage advisor, again of which there is no obligation we will receive a commission fee. The amount of commission will depend on the size of the loan and any associated products that you decide to take.

The Consumer Protection from Unfair Trading Regulations 2008 (CPRs).

These details are for guidance only and complete accuracy cannot be guaranteed. If there is any point, which is of particular importance, verification should be obtained. They do not constitute a contract or part of a contract. All measurements are approximate. No guarantee can be given with regard to planning permissions or fitness for purpose. No apparatus, equipment, fixture or fitting has been tested. Items shown in photographs are NOT necessarily included. Interested Parties are advised to check availability and make an appointment to view before travelling to see a property.





