

tavistockbow

For Rent



People Make Places



Rupert Court, Soho W1

1 bedroom | 603 sq ft

£730 pw





A one bedroom apartment in Chinatown with contemporary finishes that include striking window shutters, statement lighting and a stylish monochrome shower room. This apartment is on the third floor, walk-up, and has secondary glazing for tenant comfort. Available unfurnished immediately.

What you need to know

- One bedroom
- One shower room
- Third floor walk-up
- Striking design features
- Wooden flooring throughout
- Unfurnished
- Neff appliances
- Wine fridge
- Available immediately
- Close to Piccadilly Circus and Leicester Square underground stations





Overview

An architecturally designed one bedroom apartment in Chinatown with striking features like statement lighting and bold painted window shutters. Located on the third floor, walk-up, of a period building, the apartment has an open plan living space with a smart white kitchen complete with wine fridge positioned at one end. Dark grey shutters, industrial style lighting and wrought iron radiators add to the look, while the modern shower room features a monochrome colour palette. The bedroom has fitted wardrobes, while further storage is found in the hallway. Secondary glazing is fitted for tenant comfort with triple glazing in the bedroom.

Why Chinatown? Neighbourhoods don't come more central than this. Perfectly positioned between Covent Garden, Leicester Square and Soho, Chinatown is literally at the centre of it all with transport options in all directions. Underground services can be reached via nearby Leicester Square (Northern and Piccadilly Lines) or Piccadilly Circus (Bakerloo and Piccadilly Lines), while buses operate on nearby Shaftesbury Avenue.

The apartment is available immediately on an unfurnished basis. Subject to contract and satisfactory references. Westminster Council tax band: E.



People Make Places

London is a collection of inspiring urban villages and one of the most exciting places in the world to live, work & play.

We work with both property owners and their occupiers, sharing the story of these vibrant neighbourhoods, conveying the unique soul & energy to future custodians, the people who'll keep them buzzing.

And unlike many real estate businesses we're not just about buildings, because streets & buildings don't make a neighbourhood.

We're about building relationships, because **people make places**.

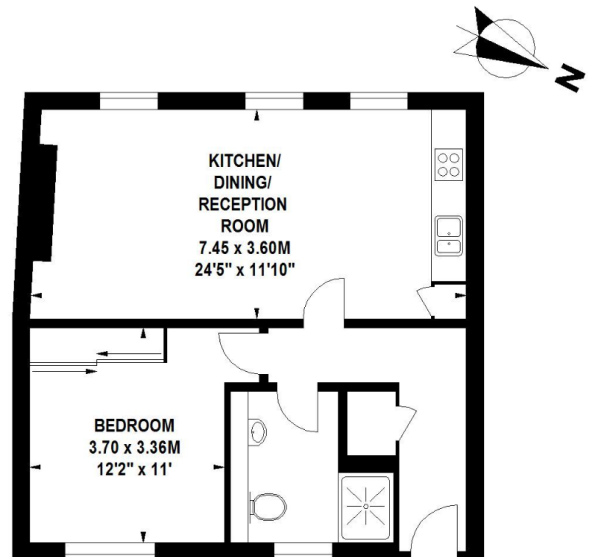
MISINTERPRITATION ACT [COPYRIGHT] DISCLAIMER: Tavistock Bow Ltd for themselves and for the vendor(s) of this property whose agents thy are, given notice that: 1. These particulars do not constitute, not constitute any part of, an offer or contract. 2. None of the statements contained in these particulars as to the property are to be relied on as statements or representations of fact. 3. Any intending purchaser or lessee must satisfy themselves by inspection or otherwise as to the correctness of each of the statements contained in these particulars. 4. The vendor(s) or lessor(s) do not make or give and neither Tavistock Bow Ltd nor any person in their employment has any authority to make or give any representation or warranty whatever in relation to this property. Finance Act 1989, Unless otherwise stated all prices and rents are quote exclusive of VAT. Property Misrepresentation Act 1991; These details are believed to be correct at the time of compilation but may be subject to subsequent amendment.

Follow us:     @tavistockbow

Score	Energy rating	Current	Potential
92+	A		
81-91	B		82 B
69-80	C	79 C	
55-68	D		
39-54	E		
21-38	F		
1-20	G		

Rupert Court, W1

Approximate Gross Internal Area 56 sq m / 603 sq ft



Third Floor

Floor Plan produced for Tavistock Bow by Mays Floorplans © . Tel 020 3397 4594
Illustration for identification purposes only, not to scale
All measurements are maximum, and include wardrobes and window bays where applicable

tavistockbow

21 New Row, Covent Garden,
London, WC2N 4LE

t: 020 7477 2177
e: hello@tavistockbow.com
w: tavistockbow.com



Rupert Court, Soho W1