



RUSSELL KILLNER
ESTATE AGENTS



**BRITISH
PROPERTY
AWARDS**
2025

GOLD WINNER

ESTATE AGENT
IN ST. NEOTS



53 Whinfell Close

Eaton Socon, St. Neots, PE19 8AB

Offers in excess of £425,000

*** NO ONWARD CHAIN, A STRAIGHTFORWARD PURCHASE *** Situated in the highly sought-after area of Eaton Socon and within a short drive of St Neots train station, this attractive four-bedroom detached family home offers well-balanced living space in a convenient and popular location.

Set close to a range of local amenities, the property opens into a welcoming entrance hallway, features a dedicated home office, a separate utility/cloakroom with fitted units, a generously sized lounge, and a bright kitchen family room with patio doors overlooking the rear garden. The kitchen is well appointed with a range of soft-close wall and base units, a gas hob, electric oven, and integrated appliances including a fridge freezer and dishwasher.

The first floor provides a spacious landing, four well-proportioned bedrooms, and a family bathroom, with the principal bedroom enjoying en suite facilities. Externally, the enclosed rear garden is mainly laid to lawn with a decorative shrub border, a patio area ideal for entertaining, and side access leading to the driveway. Further benefits include gas central heating, double glazing, a single garage, ample off-road parking, and freehold ownership.

This is a fantastic opportunity to secure a quality family home in one of Eaton Socon's most desirable residential areas.

Viewing

Please contact us on 0333 210 0179 if you wish to arrange a viewing appointment for this property or require further information.

- Sought-after Eaton Socon location within a short drive of St Neots train station
- Four-bedroom detached family home offering well-balanced and versatile living space
- Dedicated home office ideal for remote working or study
- Spacious lounge and bright kitchen family room with patio doors to the garden
- Modern kitchen fitted with soft-close units and integrated appliances
- Four well-proportioned bedrooms, the principal featuring its own en suite
- Enclosed rear garden with lawn, patio area, and side access ideal for entertaining
- Single garage and driveway providing ample off-road parking
- Gas central heating, double glazing, and freehold ownership
- Close to local amenities, schools, riverside walks, and excellent road links via the A1



4



2



3



B



**BRITISH
PROPERTY
AWARDS**

GOLD WINNER

ESTATE AGENT
IN ST. NEOTS



Floor Plan

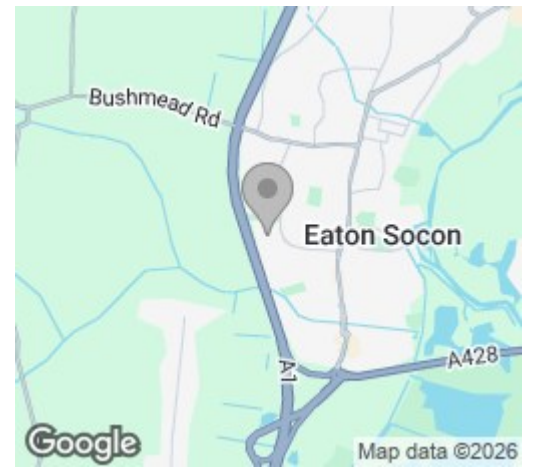
Whinfell Close, Eaton Socon, St. Neots, PE19

Approximate Area = 1278 sq ft / 118.7 sq m
 Garage = 185 sq ft / 17.4 sq m
 Total = 1466 sq ft / 136.1 sq m
 For identification only - Not to scale

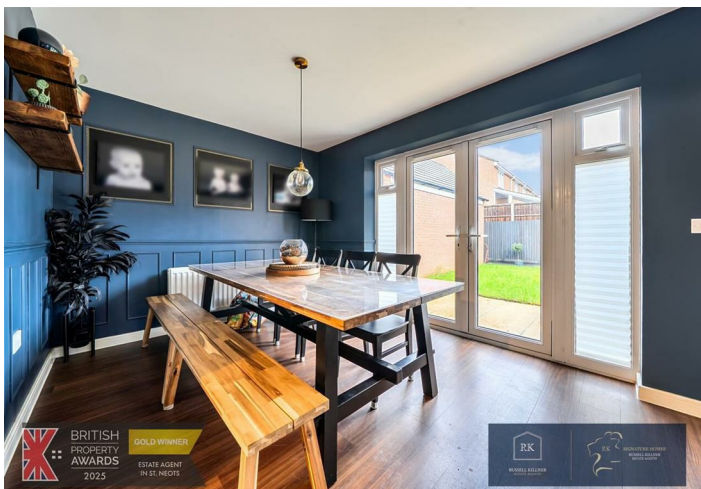
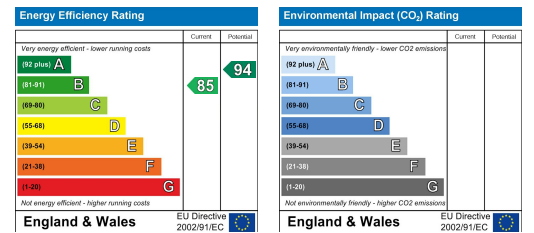


Floor plan produced in accordance with RICS Property Measurement 2nd Edition, incorporating International Property Measurement Standards (IPMS Residential). Produced for Mr. Estate Agents, REF: 1399997. ©rickbeam 2025.

Area Map



Energy Efficiency Graph



These particulars, whilst believed to be accurate are set out as a general outline only for guidance and do not constitute any part of an offer or contract. Intending purchasers should not rely on them as statements of representation of fact, but must satisfy themselves by inspection or otherwise as to their accuracy. No person in this firm's employment has the authority to make or give any representation or warranty in respect of the property.