



Colville Gardens, W11

£1,650 Per calendar month

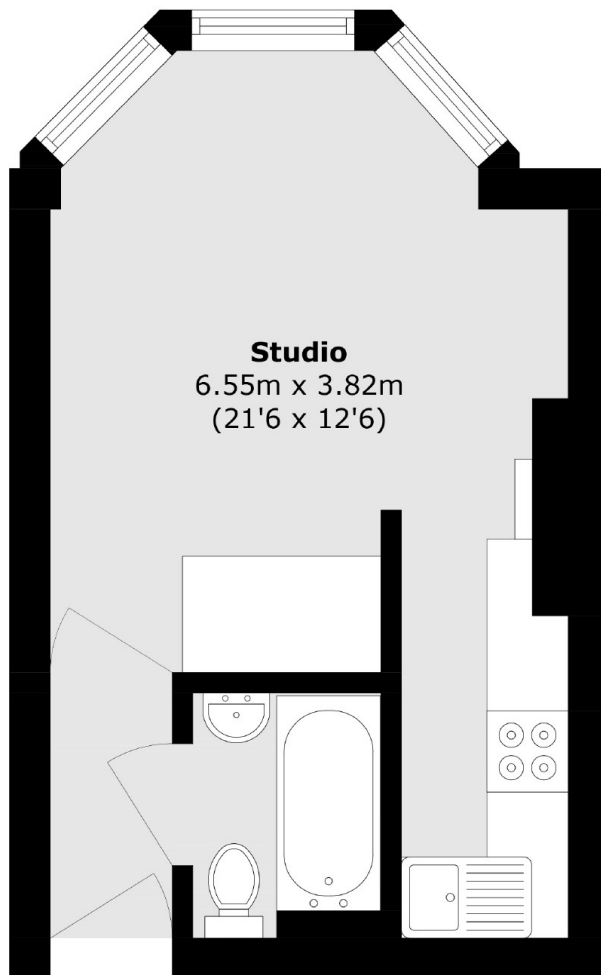
A well presented self contained studio apartment, benefitting from a open plan kitchen and spacious storage located in this portered block in Notting Hill.

The great transportation of Ladbroke Grove Station (Circle and Hammersmith and City lines) 0.4 Miles away and Notting Hill Gate (Central, Circle, and District lines) are 0.5 Miles away. Additionally, the royal green spaces of Holland Park and Kensington Gardens are a short walk.

Features

- Studio Apartment
- Spacious Storage
- Gated Development
- Communal Gardens
- Lift Access
- Caretaker on Site

Colville Gardens, London, W11



Total area (approx.): 23.5 sq. m (252.9 sq. ft)