



Guide Price
£650,000

Freehold

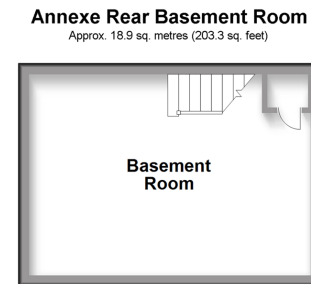
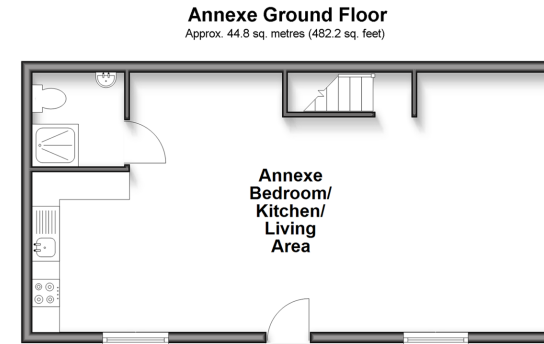
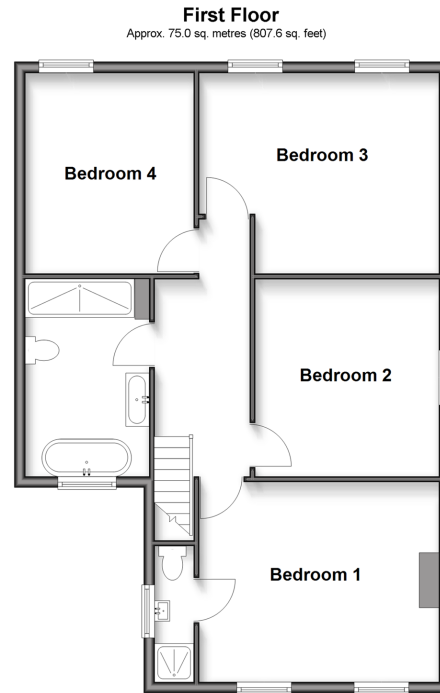
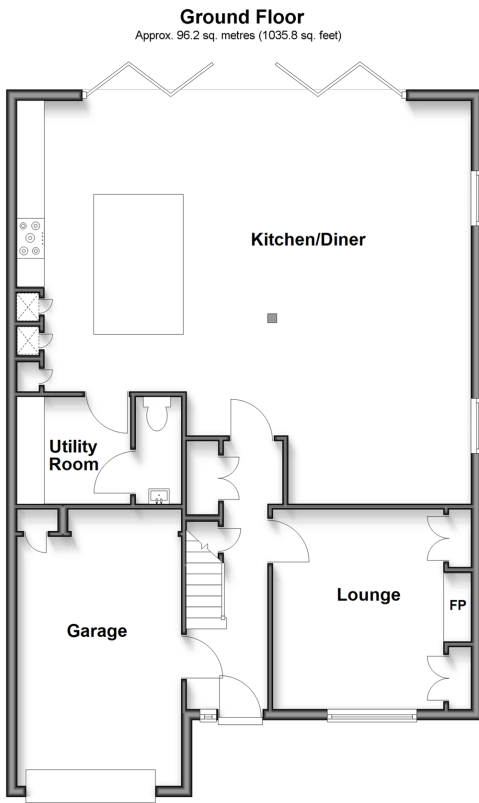
4x  2x  2x 

**Walderslade Road,
Waldersladeb, Chatham,
Kent, ME5**

OVER 60?

Secure this property
for up to **59% less!**

Wards
Helping you move forwards



Accommodation

GROUND FLOOR

Entrance Hall
Cloakroom
Lounge : 12'2 x 11'9 (3.71m x 3.58m)
Kitchen/Diner : 24'9 x 24'0 (7.55m x 7.32m)
Utility Room : 24'3 x 16'9 (7.40m x 5.11m)

FIRST FLOOR

Landing
Bedroom 1 : 14'4 x 11'9 (4.37m x 3.58m)
En Suite Shower Room : 7'6 x 3'2 (2.29m x 0.97m)
Bedroom 2 : 14'5 x 11'11 (4.40m x 3.63m)

Bedroom 3 : 11'8 x 11'1 (3.56m x 3.38m)
Bedroom 4 : 10'9 x 9'8 (3.28m x 2.95m)
Bathroom : 12'3 x 6'6 (3.74m x 1.98m)

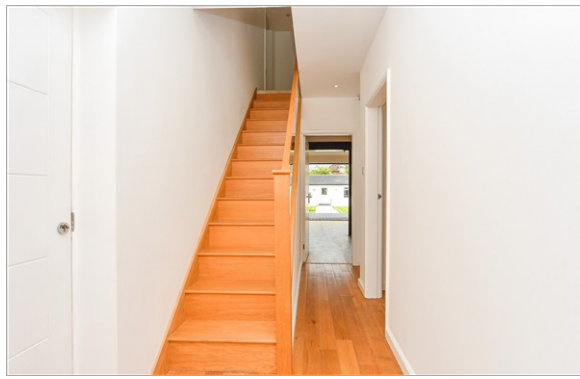
ANNEXE

Bedroom/Kitchen/Living Area: 30'8 x 15'3 (9.35m x 4.65m)
Shower Room : 6'1 x 5'7 (1.86m x 1.70m)

Basement Room: 16'8 x 12'0 (5.08m x 3.66m)

OUTSIDE

Integral Garage
Driveway & side access
Rear Garden



Main features

- Spacious detached home with garage and ample off-street parking
- Extended open-plan kitchen-diner with island and bi-folding doors to the garden
- Separate utility room and downstairs WC for added convenience
- Main bedroom with en-suite plus a modern family bathroom



Nearest Schools

Primary Schools: Ridge Meadow Primary 0.2 miles, St Thomas More RC Primary 0.5 miles, Oaklands Junior School 0.6 miles

Secondary Schools: Walderslade Girls' School 0.2 miles,



Transport Information

Train Stations: Chatham 2.1 miles, Strood 3.3 miles, Rochester 3.5 miles



Address

Walderslade Road, Walderslade, Chatham, Kent, ME5



Directions

For directions to this property please contact us.



Wards
Helping you move forwards

Call Walderslade Branch 01634 865661 ■ wardsofkent.co.uk



- Legal advice should be taken to verify fixtures/fittings, planning, alterations and/or lease details
- Appliances & services are untested, dimensions are approximate and floor plans are not to scale
- Through a Homewise Home For Life Plan people aged 60+ can secure this property for up to 59% less, by purchasing a Lifetime Lease



12137006/20260226/ML/ALH