



Arden Close Melksham SN12 7JT

- Popular Street
- Three Bedrooms
- Garage and Parking
- Detached Bungalow
- Conservatory

Asking Price £375,000 Freehold





Porch

5'7" x 6'5"

Two windows to side and front elevation, door from Outside and into Hallway.

Halway

Airing cupboard and doors to Bedrooms, Bathroom, Living Room and Kitchen/Diner.

Living Room

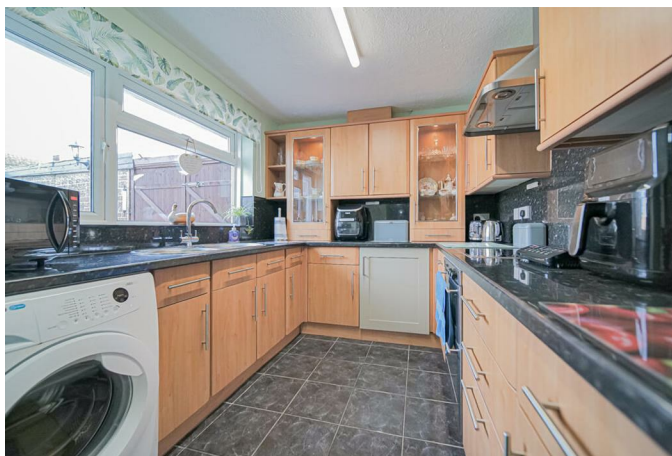
12'8" x 13'7"

Bay window to front elevation and radiator.

Kitchen/Diner

7'11" x 21'11"

Fitted with a matching range of base and eye level units with worktop space over, stainless steel sink, space for fridge/freezer, dishwasher and washing machine, built in oven with hob and extractor hood over, window to rear elevation, storage cupboard used as utility space, radiator and double doors to Conservatory.



Conservatory

12'5" x 13'2"

Windows to side and rear elevation, radiator and double doors out to Garden.

Bedroom One

12'1" x 12'2"

Window to side elevation and radiator.

Bedroom Two

10'10" x 9'4"

Window to side elevation and radiator.

Bedroom Three

9'8" x 8'11"

Bay window to front elevation and radiator.

Bathroom

6'2" x 6'7"

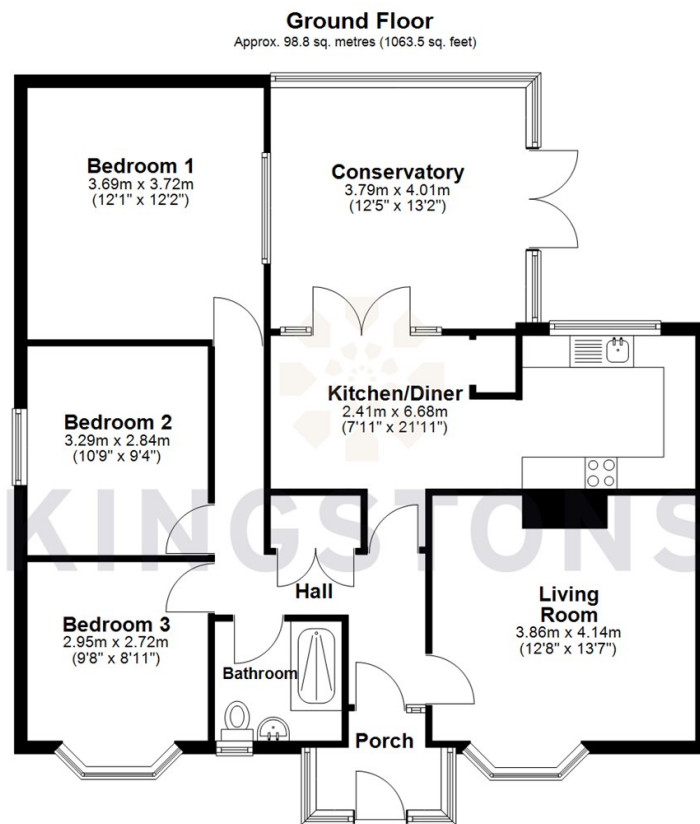
Fitted with three piece suite comprising of shower enclosure, wash hand basin and WC, window to front elevation and heated towel rail.

Outside

Front garden with Driveway parking to side toward Garage. Rear enclosed Garden with side access.



Local Authority **Wiltshire**
Council Tax Band **D**
EPC Rating **F**



Total area: approx. 98.8 sq. metres (1063.5 sq. feet)



KINGSTONS
Melksham Office

11 High Street, Melksham,
Wiltshire, SN12 6JR

Contact

01225709115
sales@kingstons.biz
www.kingstons.biz

Agents Note: Whilst every care has been taken to prepare these particulars, they are for guidance purposes only. All measurements are approximate and for general guidance purposes only and whilst every care has been taken to ensure accuracy, they should not be relied upon and potential buyers/tenants are advised to recheck the measurements.