

for sale
£310,000 Freehold



Glebe Street Walsall WS1 3NX

Glebe Street Walsall WS1 3NX



Property Description

Do you need help selling your property?
Do you need help finding the right mortgage?
Do you have a property to let?

Here at Paul Dubberley Willenhall we offer free advice on the house buying and selling process.
Contact us on 01902633323!

Access Via

A composite front door opening into:

Lounge

16' 7" x 14' 7" (5.05m x 4.45m)
Having a double glazed bow window to the front, stairs rising to first floor, wall mounted gas fire, laminate flooring and door to:

Kitchen

14' 7" x 9' 11" (4.45m x 3.02m)
Having double glazed french doors and window to the rear, a range of fitted wall and base units with work-tops over, integrated high level oven and hob, plumbing for washing machine, sink and drainer, GCH boiler and tiled floor.

Landing

Having storage cupboard, stairs rising to second floor and doors to:

Bedroom One

13' 3" x 8' 2" (4.04m x 2.49m)
Having a double glazed window to the front and radiator.

Bedroom Two

13' 5" Max x 8' 3" (4.09m Max x 2.51m)
Having a double glazed window to the rear and radiator.

Bedroom Three

6' 8" x 6' 5" (2.03m x 1.96m)

Having a double glazed window to the front and radiator.

Shower-Room

Having a double glazed window to the rear, walk-in shower cubicle, hand-wash basin, low level wc, heated towel rail and complementary tiling.

Landing

Having loft access point and doors to:

Bedroom Four

13' 3" x 8' 3" (4.04m x 2.51m)
Having a double glazed window to the front and radiator.

Bedroom Five

13' 4" x 8' 2" (4.06m x 2.49m)
Having a double glazed window to the rear and radiator.

Bedroom Six

8' 1" x 6' 5" (2.46m x 1.96m)
Having a double glazed window to the front and radiator.

Shower Room

Having a double glazed window to the rear, walk-in shower cubicle, wash-hand basin, low level wc, heated towel rail and complementary tiling.

Outside

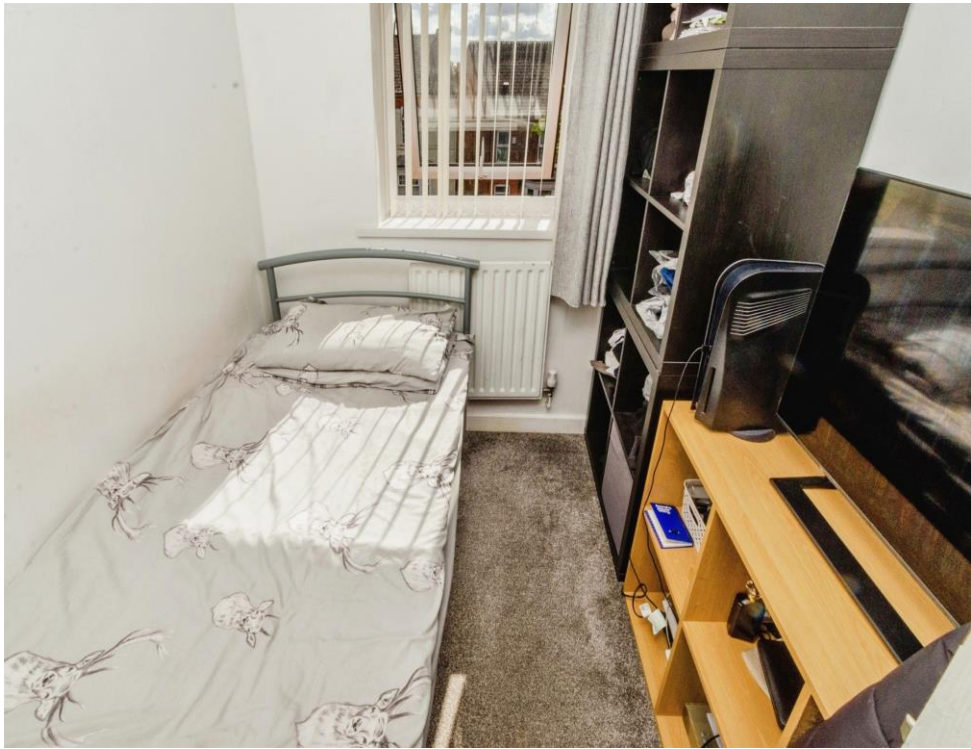
To the rear of the property is an extensive enclosed lawned garden having gate for side access, coldwater tap and gate leading to ample off road parking.

To the front of the property is a driveway providing off road parking.

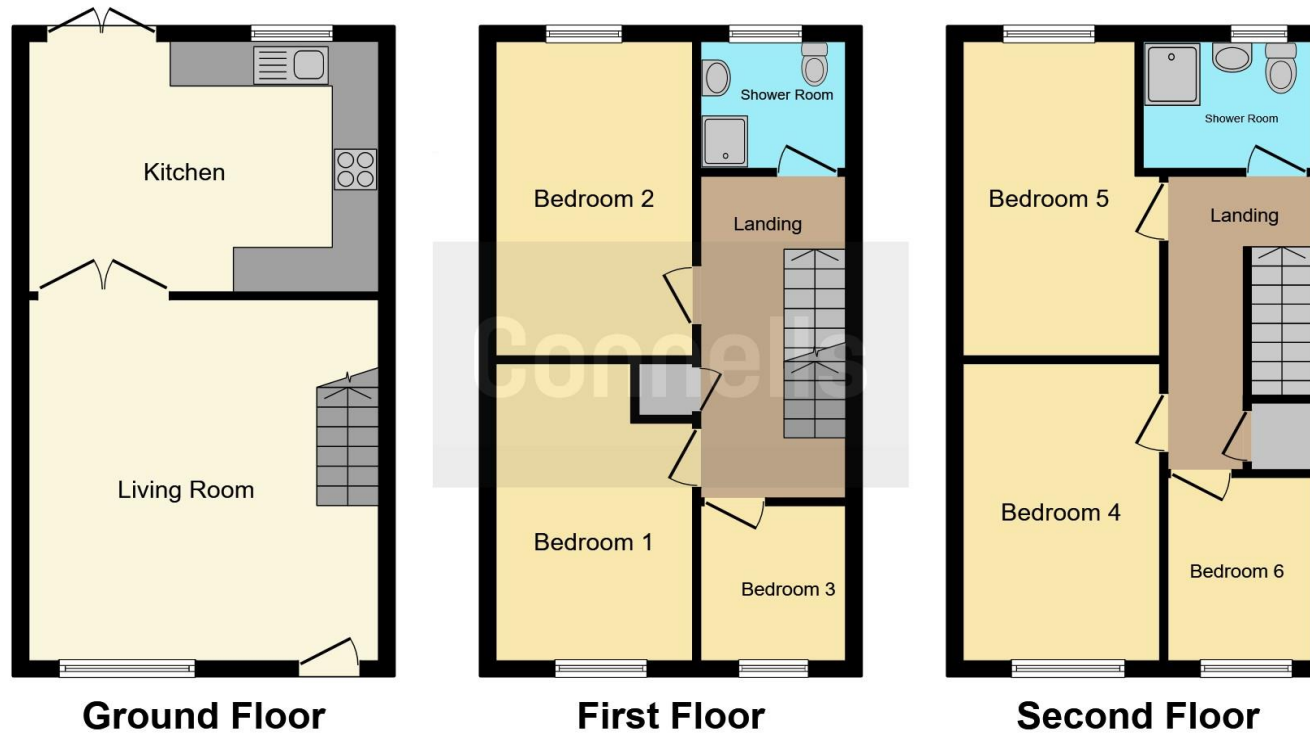
Annexe (converted Garage)

Having door to rear garden, light and power points, shower room with wash hand basin, low level wc and tiled floor.









This floor plan is for illustrative purposes only. It is not drawn to scale. Any measurements, floor areas (including any total floor area), openings and orientation are approximate. No details are guaranteed, they cannot be relied upon for any purpose and they do not form part of any agreement. No liability is taken for any error, omission or misstatement. A party must rely upon its own inspection(s). Powered by www.focalagent.com

To view this property please contact Paul Dubberley on

T 01902 633323
E willenhall@pauldubberley.co.uk

14 New Road
 WILLENHALL WV13 2BG

EPC Rating: Awaited

check out more properties at PaulDubberley.co.uk

1. MONEY LAUNDERING REGULATIONS Intending purchasers will be asked to produce identification documentation at a later stage and we would ask for your co-operation in order that there will be no delay in agreeing the sale. 2. These particulars do not constitute part or all of an offer or contract. 3. The measurements indicated are supplied for guidance only and as such must be considered incorrect. Potential buyers are advised to recheck measurements before committing to any expense. 4. We have not tested any apparatus, equipment, fixtures, fittings or services and it is in the buyers interest to check the working condition of any appliances.

Paul Dubberley is a trading name of Connells Residential which is registered in England and Wales under company number 1489613, Registered Office is Cumbria House, 16-20 Hockliffe Street, Leighton Buzzard, Bedfordshire, LU7 1GN. VAT Registration Number is 500 2481 05.

see all our properties at www.pauldubberley.co.uk | www.rightmove.co.uk | www.zoopla.co.uk

Property Ref: PW1103736 - 0002

