



Thornhill Road, KT6

£799,950

Dexters



Thornhill Road, KT6

This stunning mid-terrace period home combines the best of period character with modern luxury living. This property offers a bay-fronted reception room, a modern open-plan kitchen with dining area, a utility room and doors out onto the garden. The house also benefits from three good-sized double bedrooms, two bathrooms, ample storage throughout and a downstairs WC.

On the ground floor the house offers an original bay-fronted reception room with exposed brick fireplace, a fully fitted modern open-plan kitchen with integrated appliances and a utility room. There is also a large dining room/second reception room and a downstairs WC.

On the first floor there are two spacious bedrooms and a contemporary family bathroom. The top floor is the bright principal bedroom with an en-suite bathroom. There is also newly laid wooden flooring throughout upstairs and plenty of built-in wardrobes. Outside there is a good-sized rear garden with a storage shed and a pretty front garden.

Thornhill Road is a peaceful residential road, approximately a mile away from both Surbiton and Tolworth town centres with their mainline train stations and popular high streets, and close to great schools.

Features

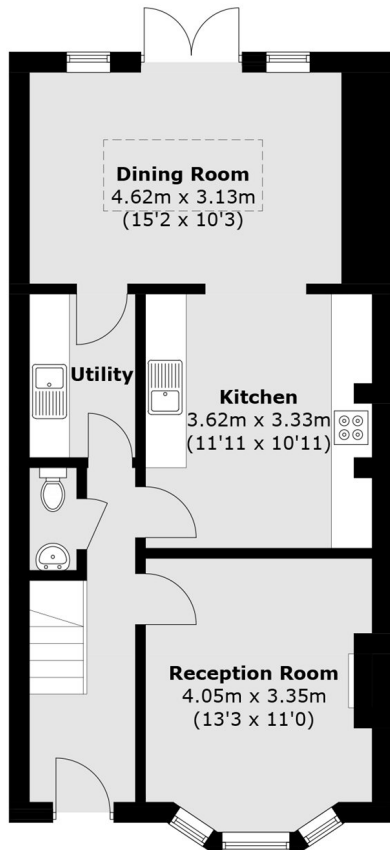
- Three Double Bedrooms
- Two Bathrooms
- Downstairs W/C
- Period Property
- Open Plan Living
- Private Garden



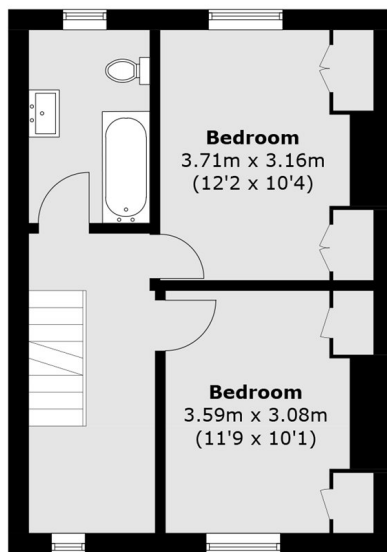




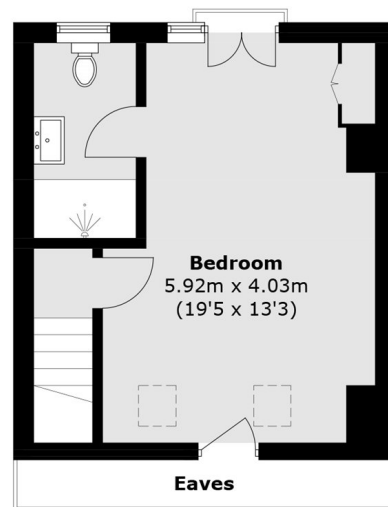
Thornhill Road, Surbiton, KT6



Ground Floor



First Floor



Second Floor

Total area (approx.): 122.5 sq. m (1,318.5 sq. ft)
(Excluding Eaves)