



GREENWICH HIGH ROAD, SE10

£1,900 per month

Modern apartment
Large bedroom
Open plan kitchen/reception
Private balcony with views
Close to stations
Energy rating: b

@marshandparsons
marshandparsons.co.uk

MARSH &
PARSONS



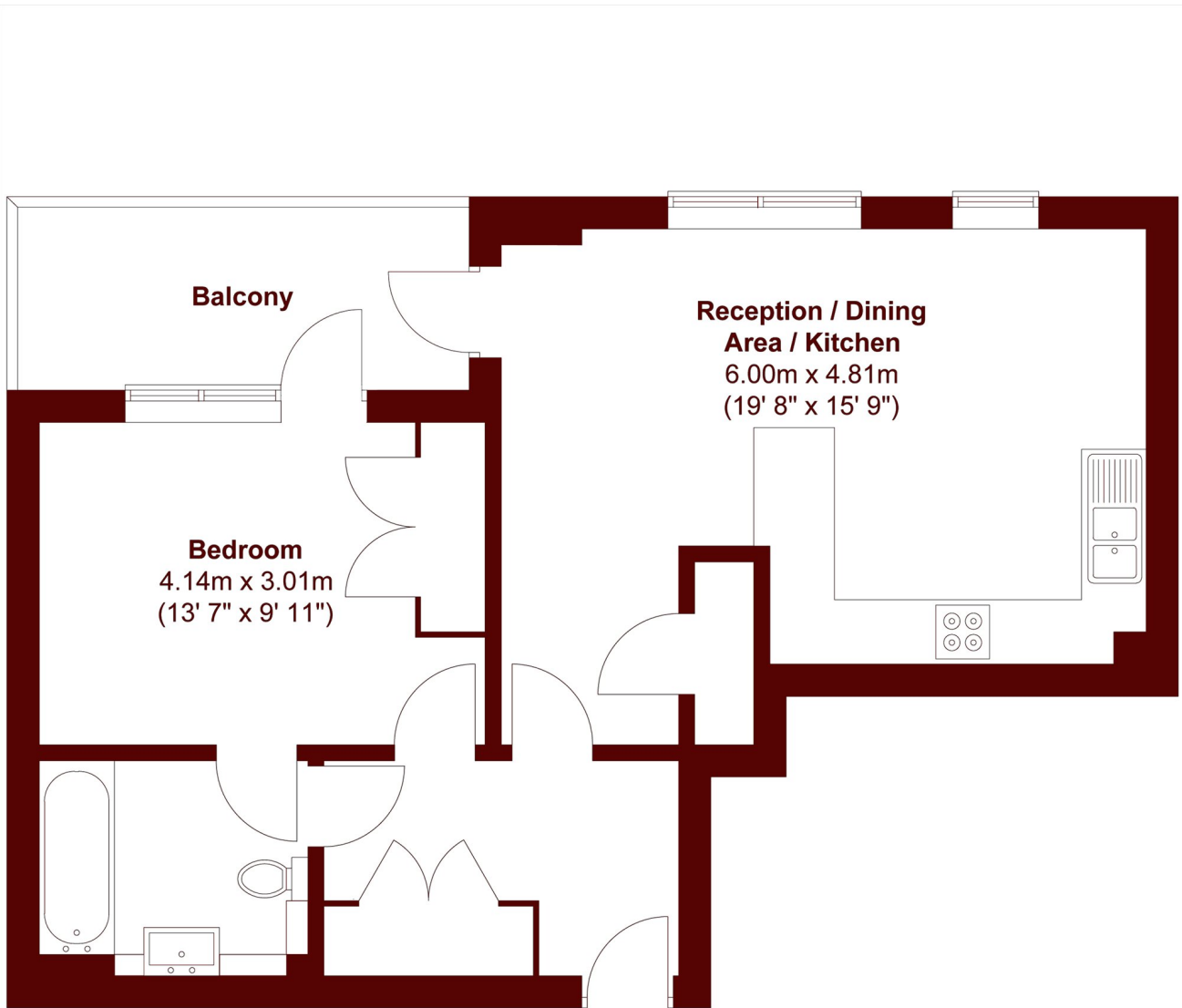
ABOUT THE PROPERTY

A modern one bedroom apartment situated on the seventh floor offering views of London. The property features a spacious and bright open plan kitchen and reception room with access to a private balcony showing views of Canary Wharf and the Creek. The balcony is also accessible by the large bedroom which features built in storage and floor-to-ceiling windows offering ample of natural light. The bathroom is luxurious and modern and offers both a bathtub and shower.

Cowan House is ideally located in West Greenwich, within a short walk to Greenwich DLR and mainline stations. Greenwich centre and the Royal Park are also within walking distance.



STEP INSIDE GREENWICH HIGH ROAD



Total area (approx.) : 52.3 sq. m (563 sq. ft)
Total balcony area (approx.) : 7.1 sq. m (76 sq. ft)

Greenwich
020 8815 2230

Energy Rating: B We aim to make our particulars both accurate and reliable. However, they are not guaranteed; nor do they form part of an offer or contract. If you require clarification on any points then please contact us, especially if you're traveling some distance to view. Please note that appliances and heating systems have not been tested and therefore no warranties can be given as to their good working order

**MARSH &
PARSONS**