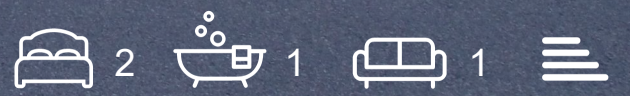
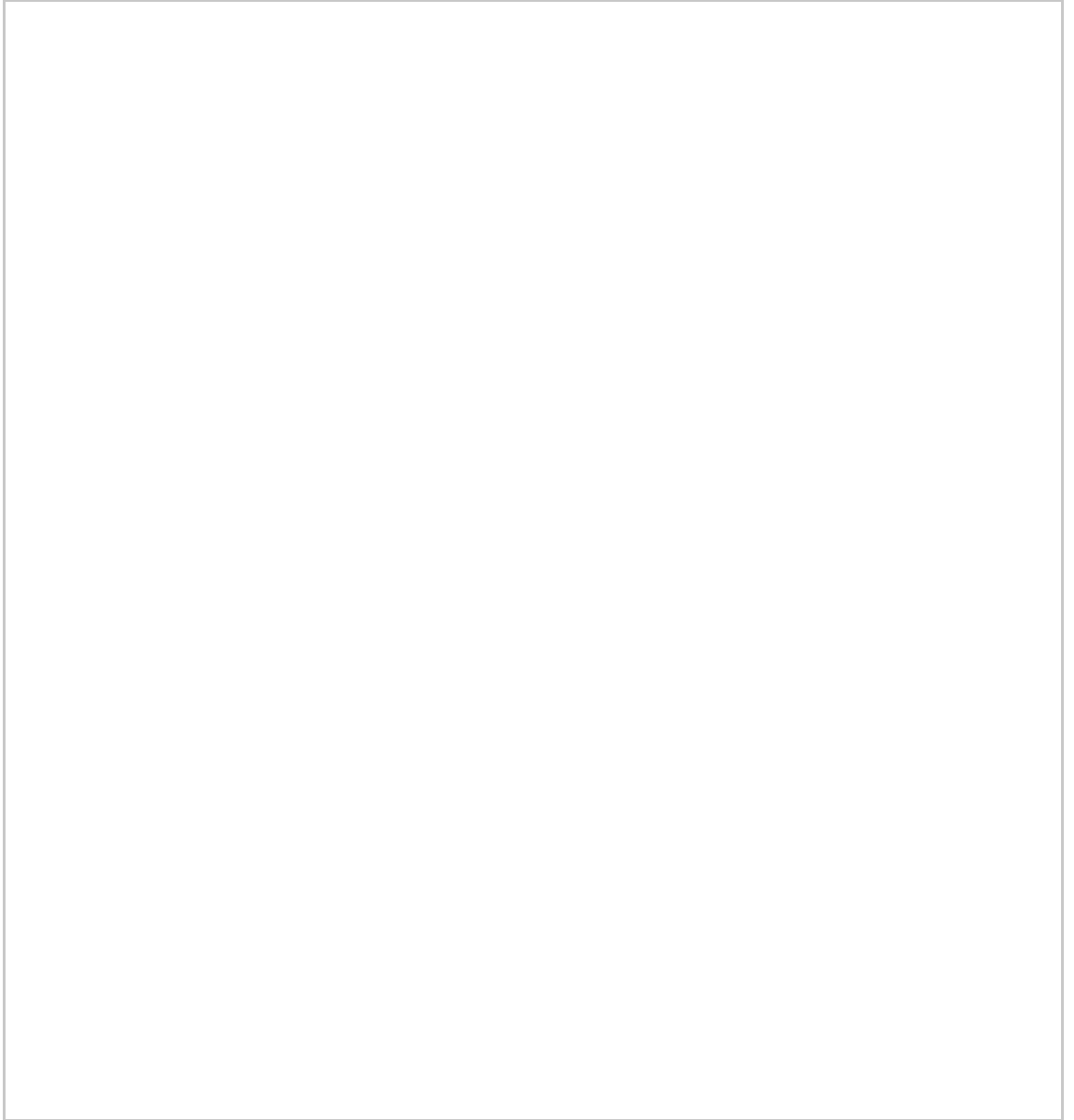


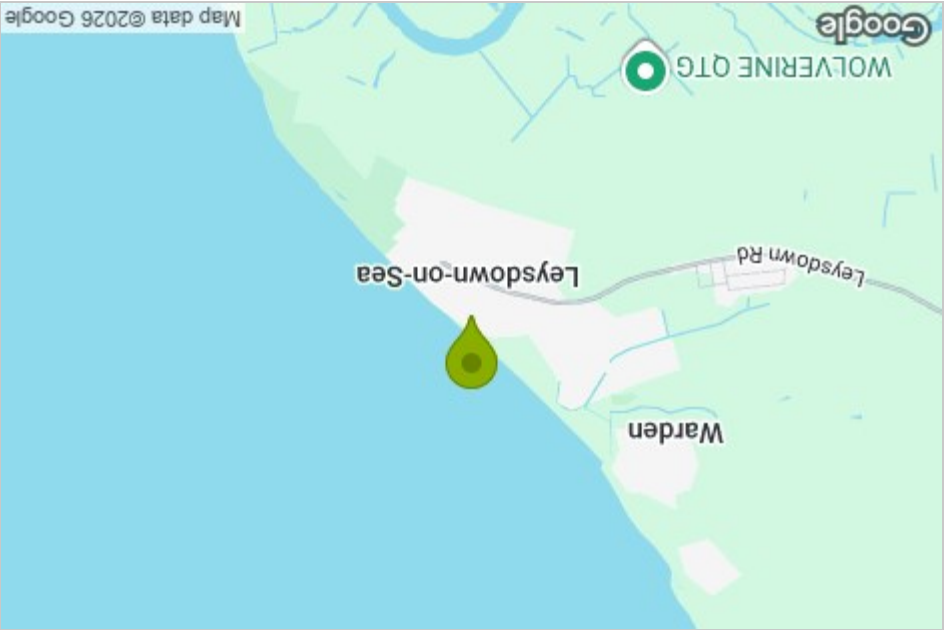
1 Seaview Mews Grove Avenue
 Leysdown-On-Sea, Sheerness, ME12 4EA
Guide price £110,000



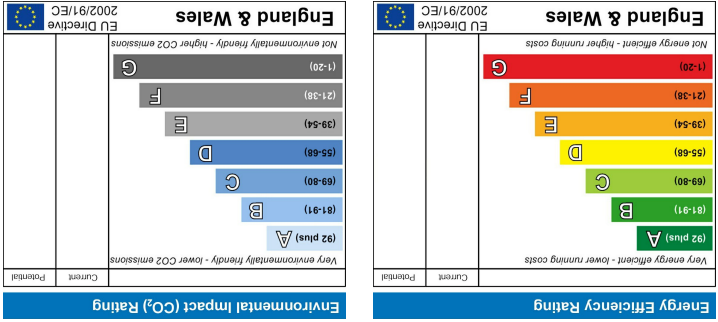
Floor Plan



Area Map



Energy Efficiency Graph

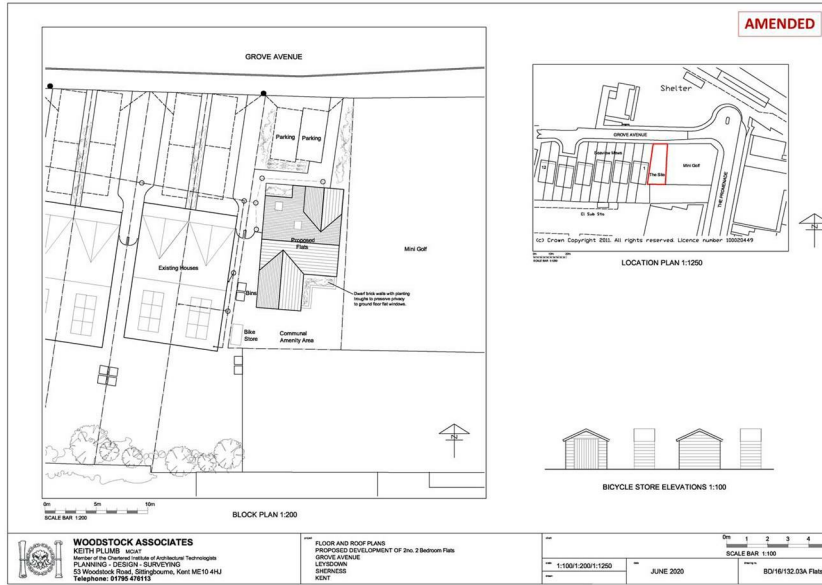


Viewing

Please contact our Isle of Sheppey Office on 01795 666 666 if you wish to arrange a viewing appointment for this property or require further information.

These particulars, whilst believed to be accurate are set out as a general outline only for guidance and do not constitute any part of an offer or contract. Intending purchasers should not rely on them as statements of representation or fact, but must satisfy themselves by inspection or otherwise as to their accuracy. No person in this firm's employment has the authority to make or give any representation or warranty in respect of the property.

1 Seaview Mews Grove Avenue



- Full Planning Permission Granted
- Uninterrupted Views Of Sea And Beach
- Close To All Local Amenities
- Good Public Transport
- One Not To Be Missed
- New Build 2 Bed x 2 Apartments
- Open Plan Lounge/Diner/Kitchen
- Great Development Opportunity
- Calling All Investors and Developers

Description

£110,000 Guide Price

Full Planning Permission Granted on Grove Avenue in the charming coastal village of Leysdown-On-Sea, Sheerness, this exceptional building plot presents a remarkable opportunity for those looking to invest in a new development. With full planning permission granted the site is primed for the construction of two modern apartments, each featuring two well-appointed bedrooms and a contemporary bathroom. Drainage has already been put in.

The design of the apartments embraces an open-plan layout, seamlessly integrating the lounge, diner, and kitchen areas. This thoughtful arrangement not only maximises space but also creates a welcoming environment perfect for both relaxation and entertaining.

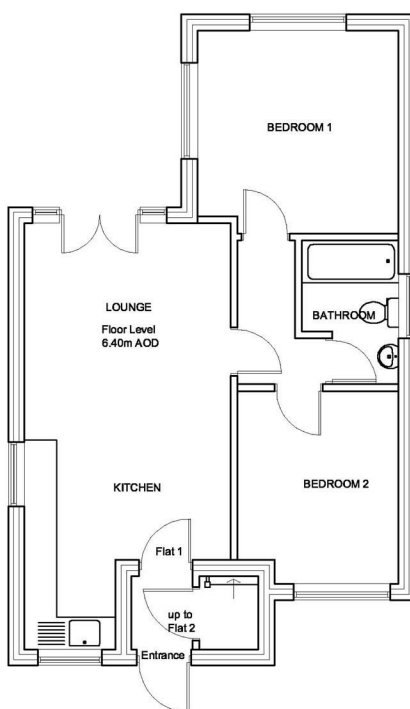
One of the standout features of this property is the uninterrupted views of the sea and beach, offering a picturesque backdrop that enhances the appeal of coastal living. Imagine waking up to the soothing sounds of the waves and enjoying stunning sunsets from the comfort of your own home.

This plot represents a fantastic development opportunity for builders and investors alike, allowing for the creation of desirable living spaces in a sought-after location. With the potential for lucrative returns, this is an ideal project for those looking to make their mark in the property market.

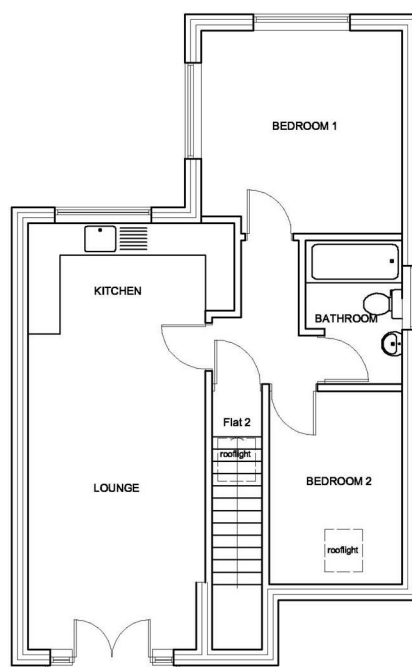
In summary, this new build site on Grove Avenue is not just a piece of land; it is a canvas for your vision, set against the beautiful backdrop of Leysdown-On-Sea. Don't miss the chance to turn this opportunity into a reality.

Leysdown-On-Sea, Sheerness, ME12 4EA

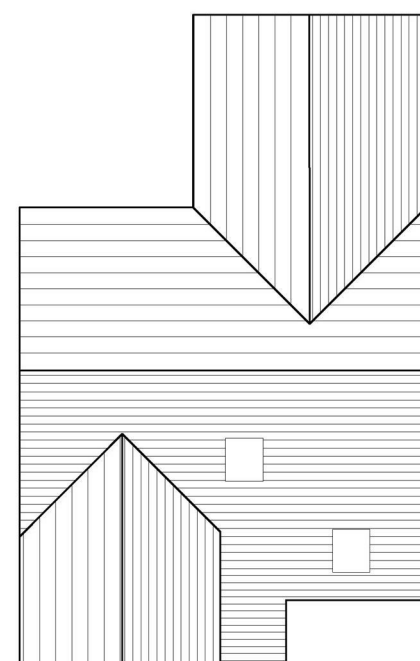
AMENDED



GROUND FLOOR PLAN 1:100
61.5m² GIA



FIRST FLOOR PLAN 1:100
61.5m² GIA



ROOF PLAN 1:100