

Mike
Dobson



2 Green Lane

Garforth, Leeds, LS25 2QF

£185,000

2 Green Lane

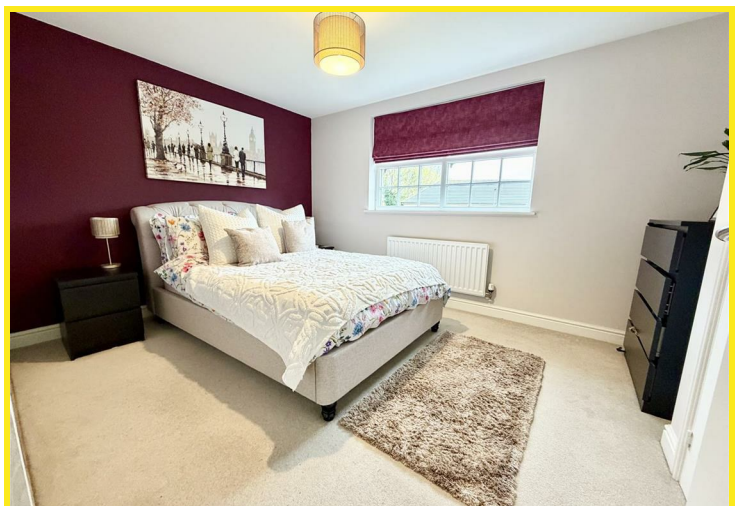
Nestled in the charming area of Green Lane, Garforth, this beautifully maintained first-floor apartment offers a perfect blend of modern living and comfort. Built by the reputable Redrow Homes in 2019, this two-bedroom flat is an ideal choice for those seeking a contemporary lifestyle in a welcoming community.

Upon entering, you will be greeted by a secure entry system, ensuring peace of mind for residents. The spacious open plan reception room provides a warm and inviting atmosphere, perfect for relaxation or entertaining guests along with a dining area and modern open plan kitchen. The well-appointed kitchen is designed for both functionality and style, making it a delightful space for culinary enthusiasts.

The apartment features two generously sized bedrooms, providing ample space for rest and personalisation. The bathroom is tastefully designed, offering a serene retreat for your daily routines.

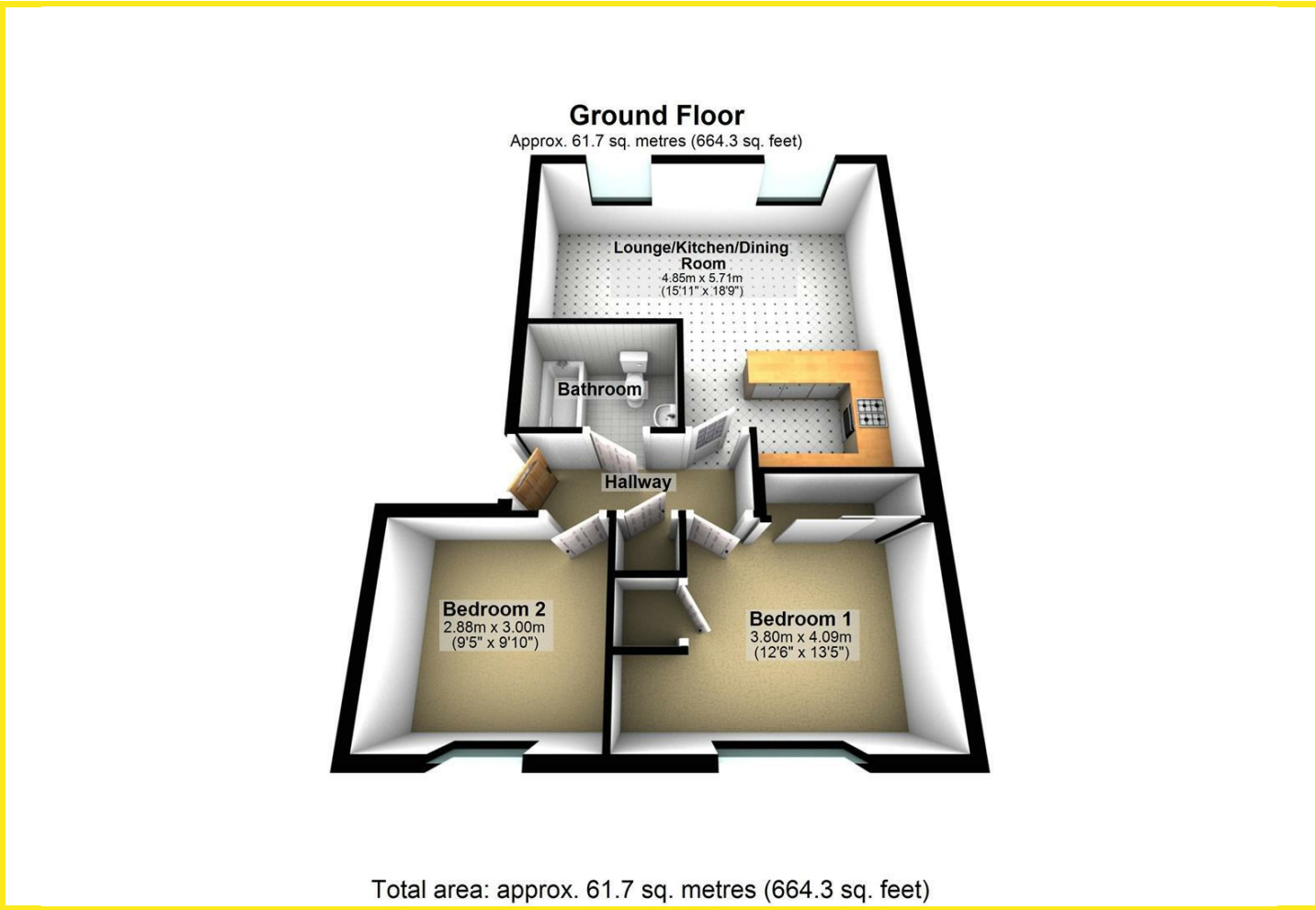
Another feature of this property is the allocated parking space, complete with an electric charging point, catering to the needs of modern living and environmentally conscious residents.

This flat is not just a home; it is a lifestyle choice, situated in a vibrant area with easy access to local amenities, parks, and transport links including East Garforth Train Station. Whether you are a first-time buyer, a young professional, or looking to downsize, this property presents an excellent opportunity to enjoy comfortable living in a sought-after location. Do not miss the chance to make this delightful apartment your new home.

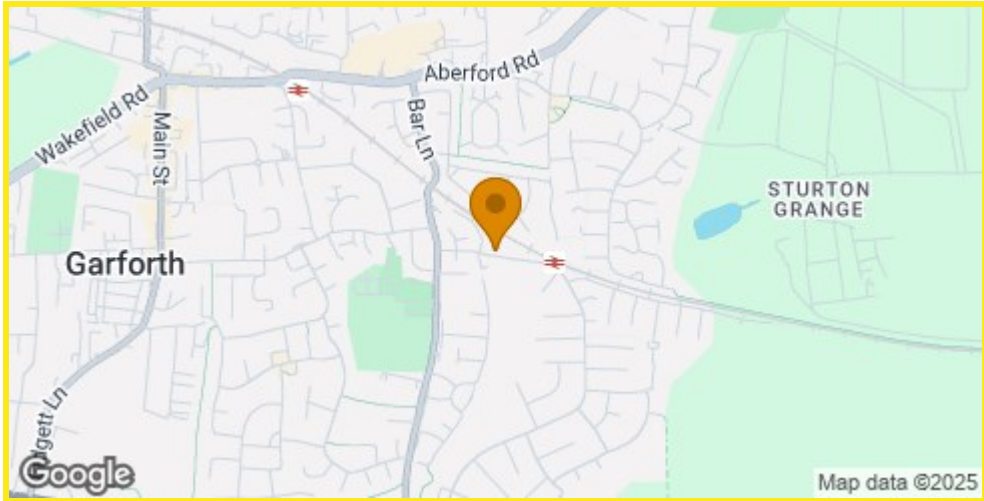




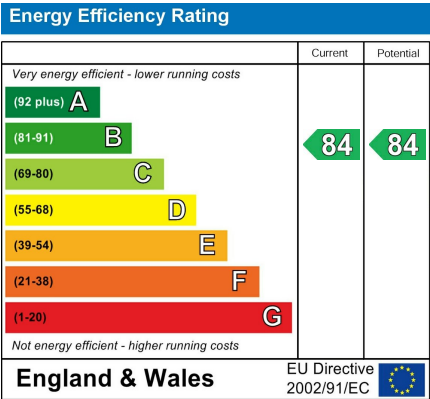
Floor Plan



Area Map



Energy Efficiency Graph



Directions