



**Guide Price**

**£305,000**

**Freehold**

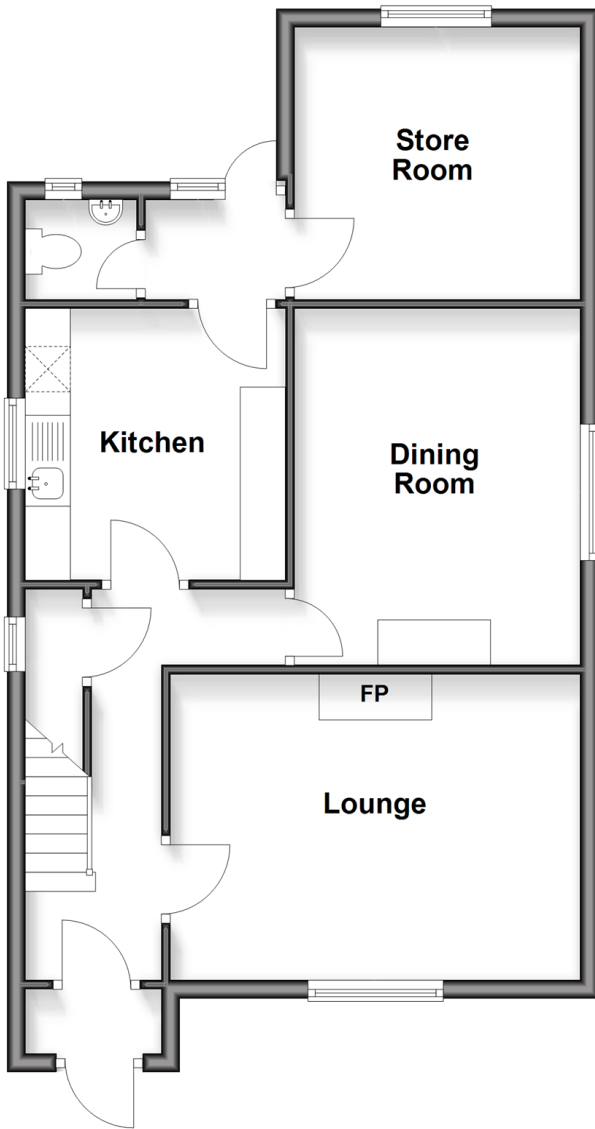
3x  1x  1x 

**Forest Road, Winford,  
Isle of Wight, PO36**

**Pittis**   
Helping you move forwards

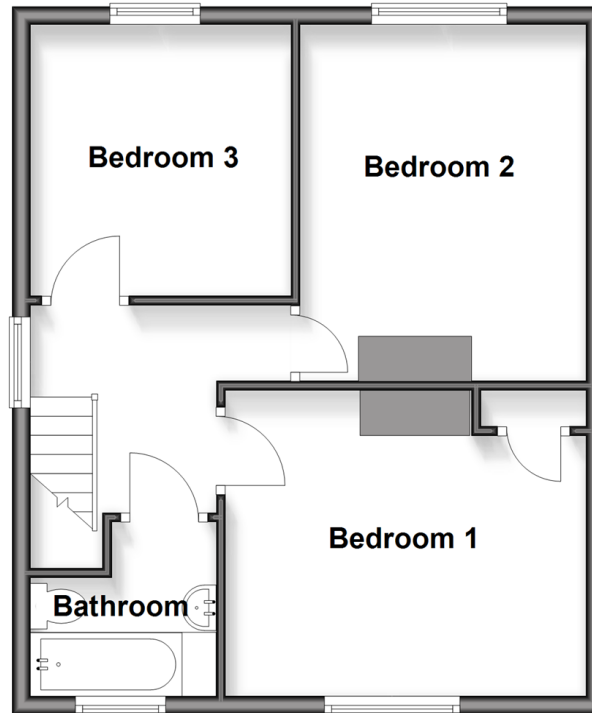
## Ground Floor

Approx. 60.1 sq. metres (647.1 sq. feet)



## First Floor

Approx. 45.5 sq. metres (489.7 sq. feet)



## Accommodation

### GROUND FLOOR

Hallway

Lounge: 14'9 x 11'5 (4.50m x 3.48m)

Dining Room: 12'8 x 10'4 (3.86m x 3.15m)

Kitchen: 9'7 x 9'5 (2.92m x 2.87m)

Cloakroom

Store Room: 10'6 x 10'0 (3.20m x 3.05m)

### FIRST FLOOR

Landing

Bedroom 1: 13'8 x 12'10 (4.17m x 3.91m)

Bedroom 2: 12'8 x 10'5 (3.86m x 3.18m)

Bedroom 3: 9'8 x 9'6 (2.95m x 2.90m)

Bathroom

### OUTSIDE

Front & Rear Gardens

Driveway



## Main features

- Large detached family house with extensive gardens
- Scope to improve and modernise throughout with original features
- Separate lounge with original fireplace and dining room
- Countryside views both front and back



### Nearest Schools

The Bay CE School  
Shanklin C of E Primary Schools  
Gatten & Lake Primary School  
Shanklin Pre-School & Nursery  
Brading CE Primary School



### Transport Information

Local buses providing Island wide connections plus local train station with direct links to Ryde Pier Head.



### Address

Forest Road, Winford, Isle of Wight, PO36



### Directions

For directions to this property please contact us.

