

Albert Embankment, SE1

£11,000 Per calendar month

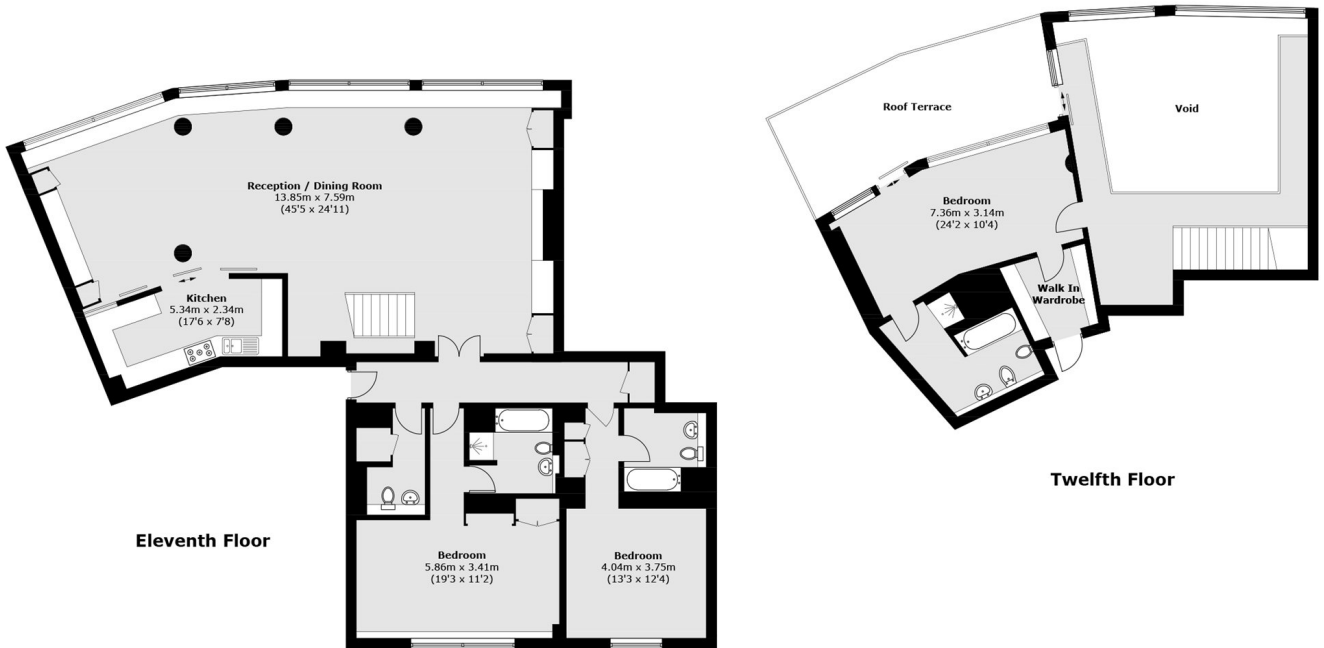
An exceptional three bedroom duplex penthouse with incredible views of the Thames and the Houses Of Parliament. The reception room spans over 100 square meters, with floor-to-ceiling windows and a striking mezzanine overlooking the large living room. The primary suite benefits from a large en-suite bathroom, a walk-in wardrobe and a private roof terrace with breathtaking views of the iconic London Skyline.

Parliament View offers 24-hour concierge, a residents' gymnasium and a prime riverside position between Lambeth Bridge and Vauxhall Bridge, within easy reach of Westminster, the West End, the City and the South Bank, as well as Vauxhall station.

Features

- Three Bedrooms
- Three En-suites
- Private Roof Terrace
- Duplex Penthouse
- 24 Hr Concierge
- Secure Allocated Parking

Albert Embankment, London, SE1



Total area (approx.): 252.3 sq. m (2,715.7 sq. ft)
Roof Terrace: 24.4 sq. m (262.6 sq. ft)
Excluding Void