



00 Rockbourne Close, Derby, DE24 0TW Offers in excess of £265,000

Offered with No Onward Chain

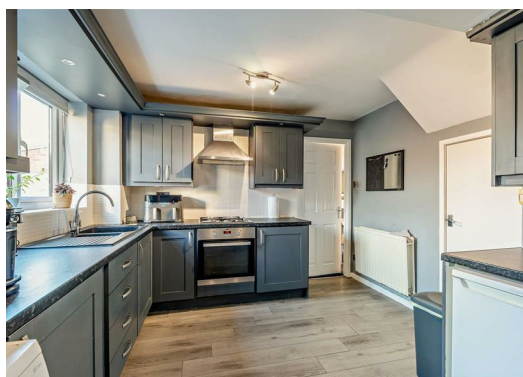
Situated in the ever-popular village of Alvaston, on the outskirts of Derby, this spacious and well-proportioned detached home presents an excellent opportunity for a wide range of buyers.

Designed with generous living space throughout, the property briefly comprises an inviting entrance hall leading to a bright and comfortable lounge, featuring a central fireplace and attractive bay window. The kitchen is fitted with a range of base and wall units and provides space for white goods. A separate study completes the ground floor, offering flexibility for home working or additional living space.

To the first floor, the landing provides access to the principal bedroom, which benefits from fitted wardrobes and a private en-suite shower room. There are three further well-sized bedrooms and a family bathroom.

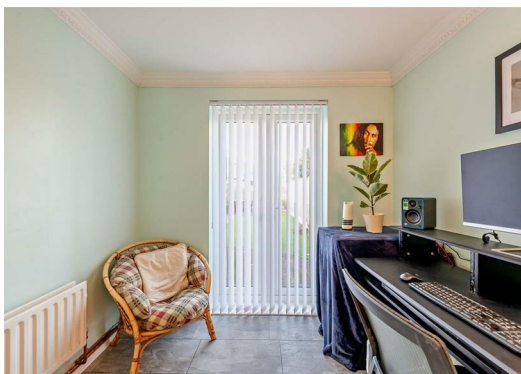
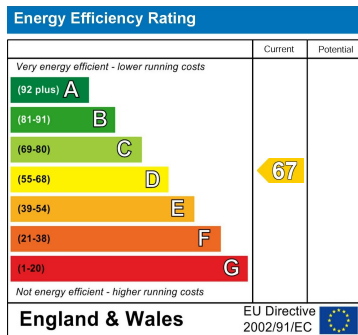
Externally, the rear of the property enjoys an enclosed garden, thoughtfully arranged with low-maintenance artificial lawn and patio/gravel seating areas. A useful outhouse provides additional storage. To the front, a driveway offers off-road parking and leads to the integral garage.

Location



Disclaimer

- 1. MONEY LAUNDERING REGULATIONS:** Intending purchasers will be asked to produce identification documentation at a later stage and we would ask for your co-operation in order that there will be no delay in agreeing the sale.
- 2. General:** While we endeavour to make our sales particulars fair, accurate and reliable, they are only a general guide to the property and, accordingly, if there is any point which is of particular importance to you, please contact the office and we will be pleased to check the position for you, especially if you are contemplating travelling some distance to view the property.
- 3. Measurements:** These approximate room sizes are only intended as general guidance. You must verify the dimensions carefully before ordering carpets or any built-in furniture.
- 4. Services:** Please note we have not tested the services or any of the equipment or appliances in this property, accordingly we strongly advise prospective buyers to commission their own survey or service reports before finalising their offer to purchase.
- 5. THESE PARTICULARS ARE ISSUED IN GOOD FAITH BUT DO NOT CONSTITUTE REPRESENTATIONS OF FACT OR FORM PART OF ANY OFFER OR CONTRACT. THE MATTERS REFERRED TO IN THESE PARTICULARS SHOULD BE INDEPENDENTLY VERIFIED BY PROSPECTIVE BUYERS OR TENANTS. NEITHER GOODMOVE NOR ANY OF ITS EMPLOYEES OR AGENTS HAS ANY AUTHORITY TO MAKE OR GIVE ANY REPRESENTATION OR WARRANTY WHATEVER IN RELATION TO THIS PROPERTY.**



Ground Floor 4320 Park Approach, Thorpe Park, Leeds, LS15 8GB

Tel: 0113 892 1166

sales@goodmove.co.uk

www.goodmove.co.uk