

HUNTERS[®]
HERE TO GET *you* THERE

4   3  | 

Alcantara Crescent, Southampton

Offers In Excess Of £600,000



This elegant and tastefully decorated four bedroom town house with south facing patio/garden is situated in the prime location of Ocean Village, with amazing views and amenities right on its door step.

Upon entering the home, you are welcomed by a elegant hallway that offers a clear view through the first floor's open-plan living space. To the right sits the kitchen; a stylish, modern room complemented by a thoughtfully designed breakfast bar that seamlessly connects the spaces.

Beyond this, the impressive living area unfolds across two levels, unified by striking double-height French doors that flood the space with natural light and provide direct access to the large rear patio and communal garden. The lower ground floor offers added practicality, featuring a convenient W/C and utility area, along with direct access to the garage and driveway.

The second floor continues to impress with a sophisticated master bedroom complete with en-suite, positioned opposite a generous second double bedroom and a beautifully finished family bathroom.

On the third floor, two further exceptional double bedrooms are served by an additional elegant family bathroom, completing this spacious and thoughtfully designed home.

This property offers versatile living across multiple levels and it is perfectly matched for modern family life and effortless entertaining.

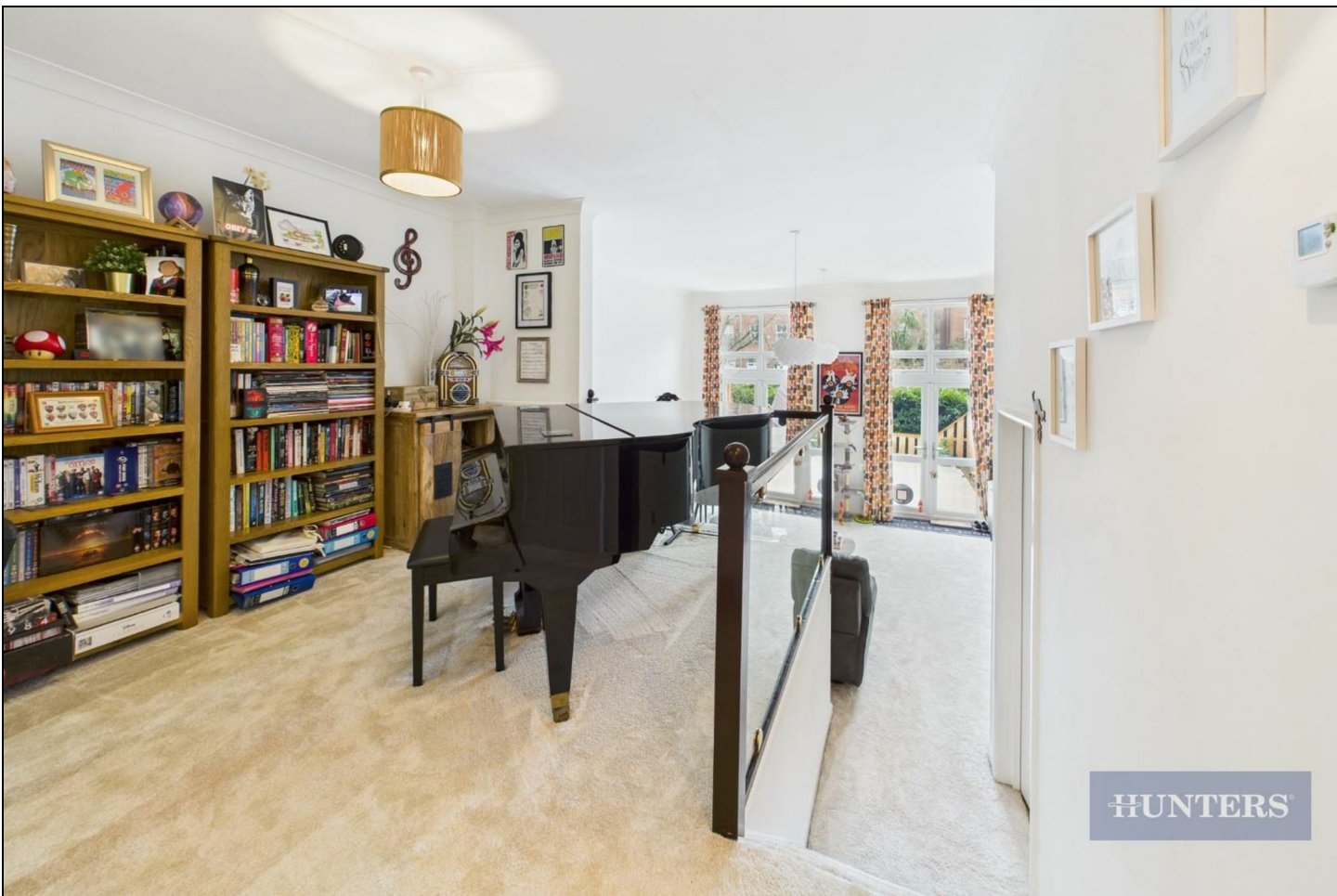
TENURE

LEASE : Years remaining : 958 years. approx.

SERVICE CHARGES PER ANNUM: £725.32 approx.

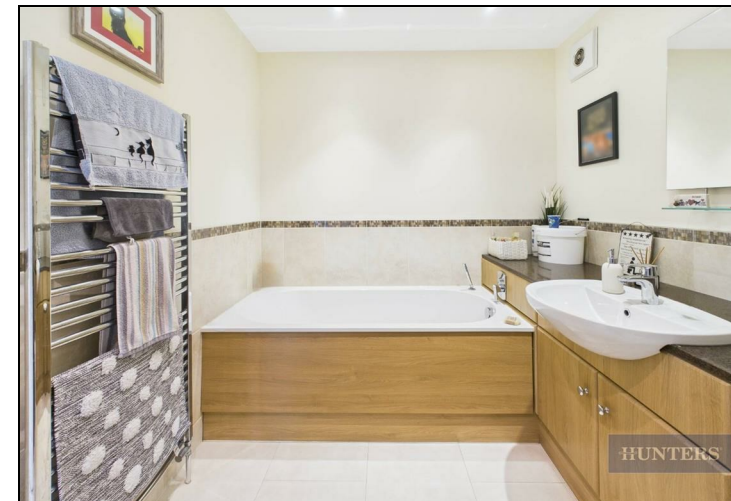
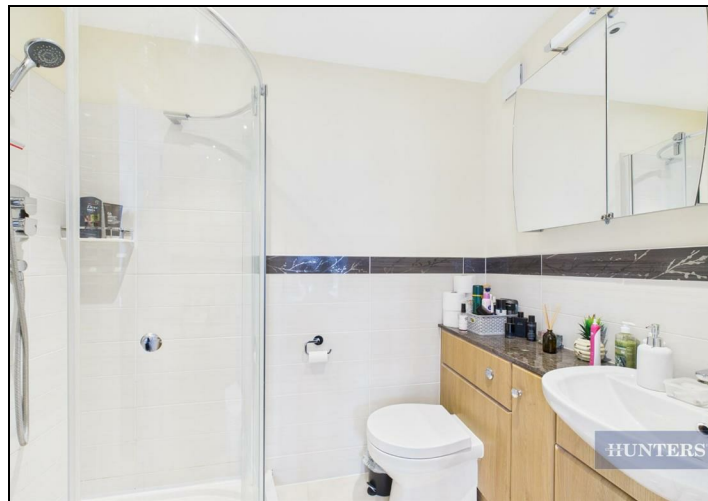
GROUND RENT PER ANNUM : £100

COUNCIL TAX BAND: F



KEY FEATURES

- Four bedroom town house
- Modern & impressive living spaces
 - Rear garden/ patio area
 - Modern kitchen
 - Breakfast bar
- Master bedroom with En-suite
 - Three Bathrooms
 - Driveway
 - Garage
- Superb Ocean Village location

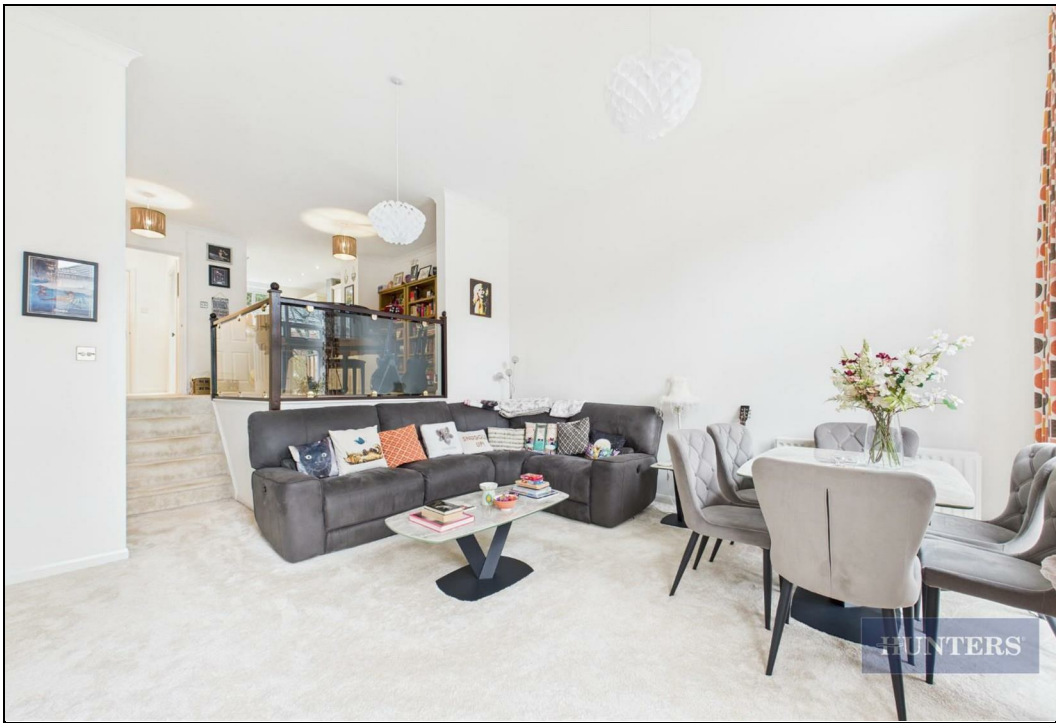




HUNTERS



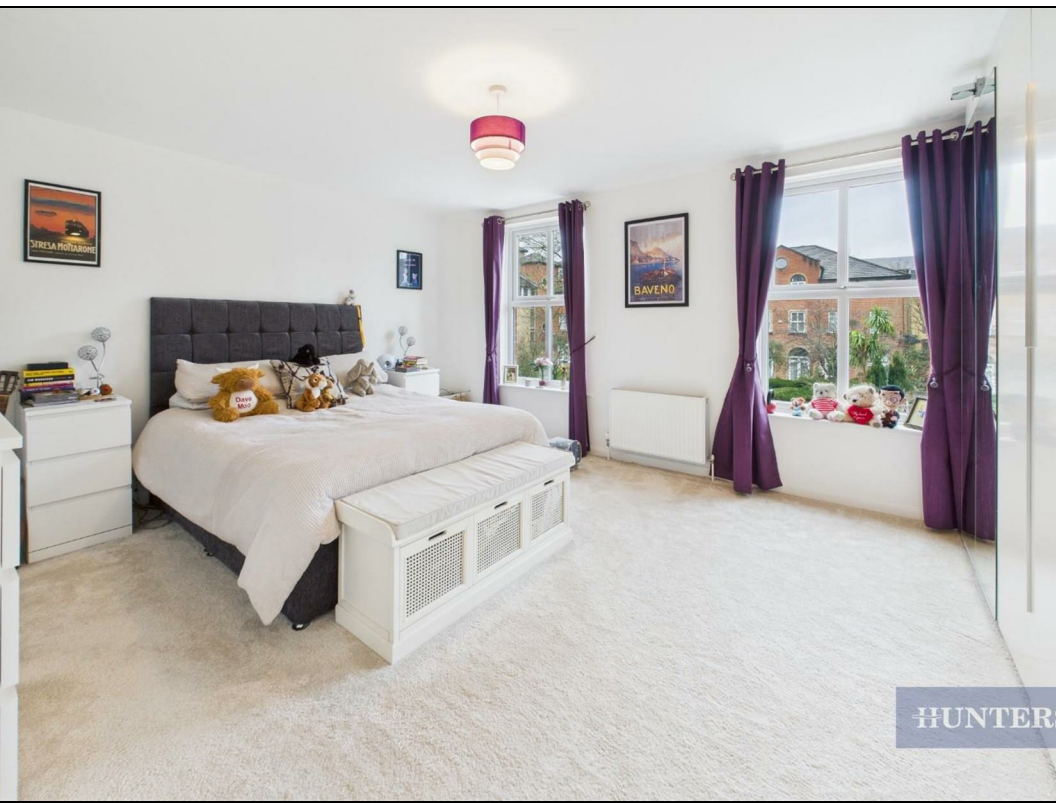
HUNTERS



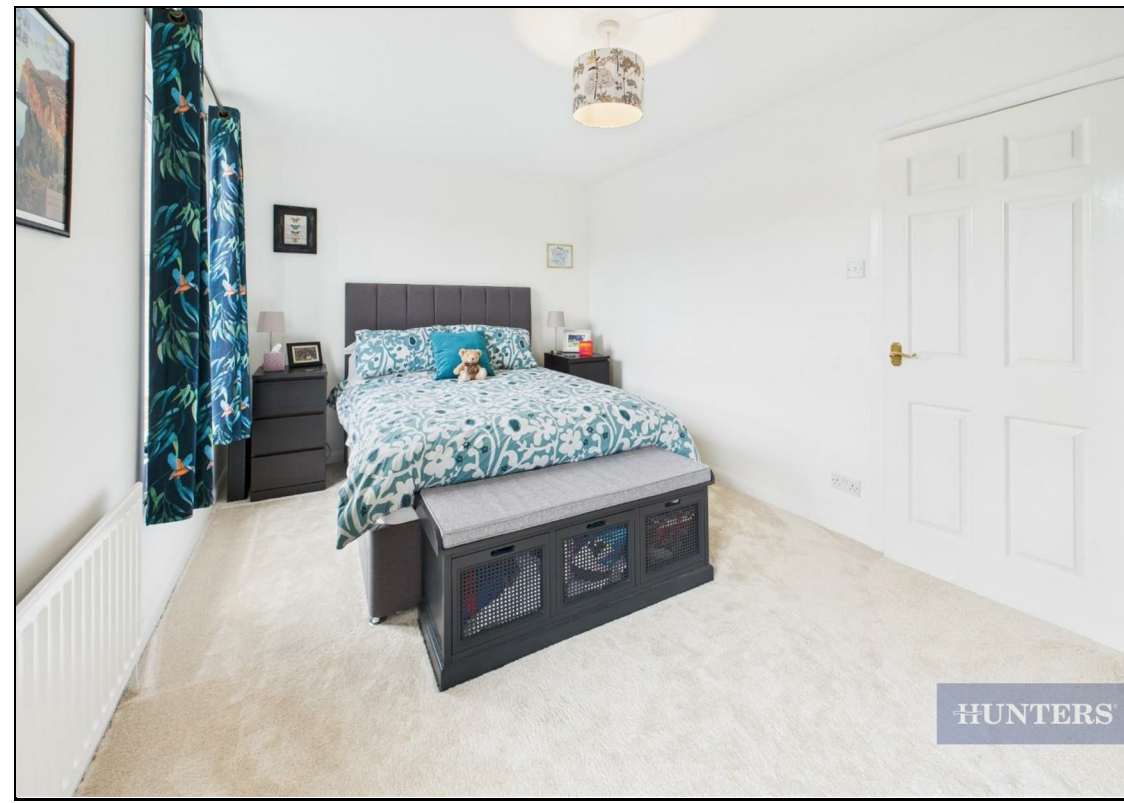
HUNTERS



HUNTERS



HUNTERS



HUNTERS



HUNTERS



HUNTERS



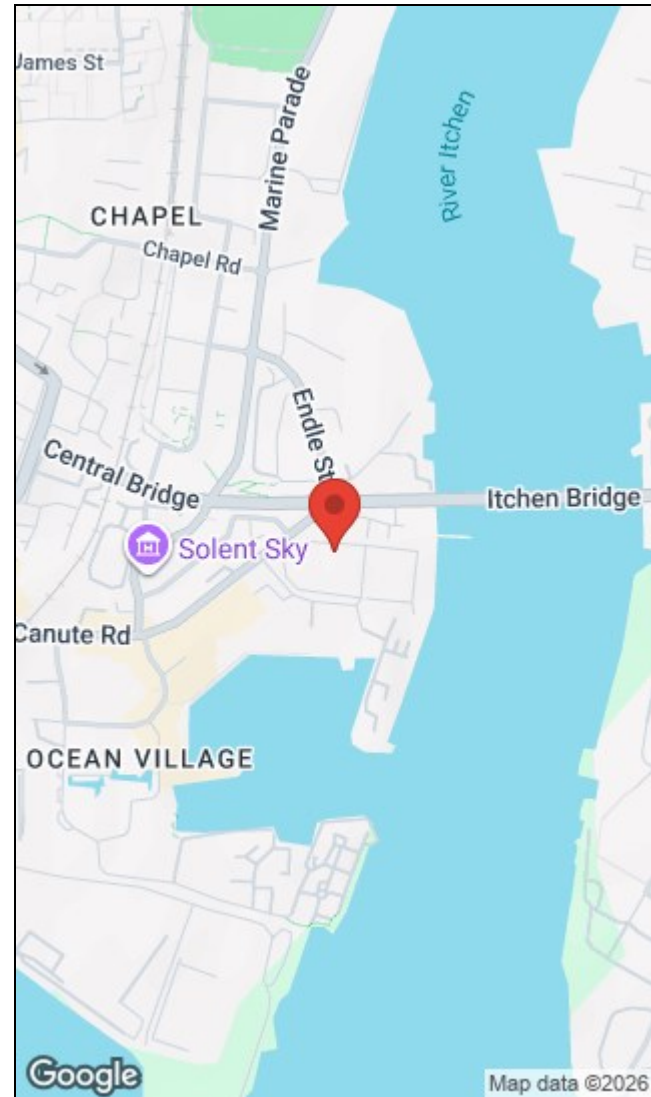
HUNTERS

Approximate total area⁽¹⁾
157.9 m²
1699 ft²

(1) Excluding balconies and terraces

Calculations reference the RICS IPMS 3C standard. Measurements are approximate and not to scale. This floor plan is intended for illustration only.

GIRAFFE360



Energy Efficiency Rating		Environmental Impact (CO ₂) Rating	
Current	Potential	Current	Potential
	84		
76			

Very energy efficient - lower running costs
(92 plus) **A**
(81-91) **B**
(69-80) **C**
(55-68) **D**
(39-54) **E**
(21-38) **F**
(1-20) **G**
Not energy efficient - higher running costs

EU Directive 2002/91/EC

Very environmentally friendly - lower CO₂ emissions
(81-91) **B**
(69-80) **C**
(55-68) **D**
(39-54) **E**
(21-38) **F**
(1-20) **G**
Not environmentally friendly - higher CO₂ emissions

EU Directive 2002/91/EC

38 Bedford Place, Southampton, Hampshire, SO15 2DG | 02380 987 720
southampton@hunters.com | www.hunters.com



This Hunters business is independently owned and operated by Clegg Properties Ltd | Registered Address 27 Westfield Road, Lymington, Hampshire, England, SO41 3PZ | Registered Number: 06421594 England and Wales | VAT No: 188 0548 76 with the written consent of Hunters Franchising Limited.