



**63 DRAKE ROAD
CHESSINGTON
KT9 1LQ
OFFERS IN EXCESS OF
£450,000**

TERRACE HOUSE

THREE BEDROOMS

27'10 X 15'4 LOUNGE DINING ROOM

11'10 X 6'11 KITCHEN

WHITE BATHROOM SUITE

DOUBLE GLAZED WINDOWS

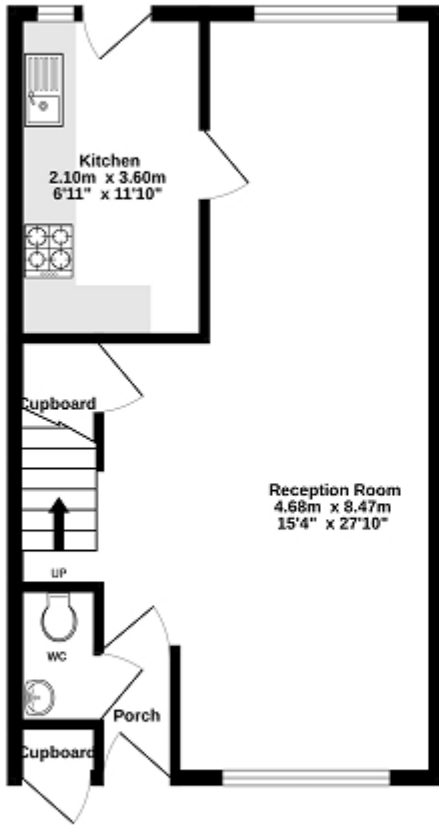
GAS CENTRAL HEATING

40' X 17' REAR GARDEN

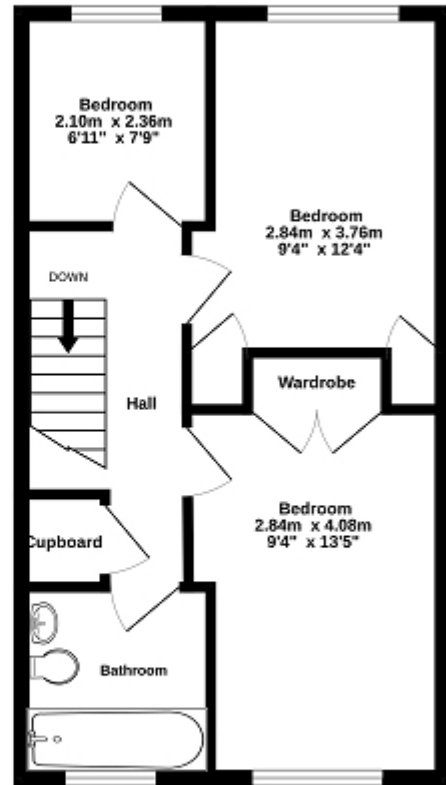
GARAGE IN BLOCK

AN IDEAL FIRST TIME BUY OR FAMILY HOME

Ground Floor
39.6 sq.m. (427 sq.ft.) approx.



1st Floor
39.6 sq.m. (427 sq.ft.) approx.



TOTAL FLOOR AREA : 79.2 sq.m. (853 sq.ft.) approx.

Whilst every attempt has been made to ensure the accuracy of the floorplan contained here, measurements of doors, windows, rooms and any other areas are approximate and no responsibility is taken for any error, omission or mis-statement. This plan is for illustrative purposes only and should be used as such by any prospective purchaser. The services, systems and appliances shown have not been tested and no guarantee as to their operability or efficiency can be given.
Made with Metropix ©2025

