



Great Central, Chatham Street, Sheffield, S3

£850 PCM

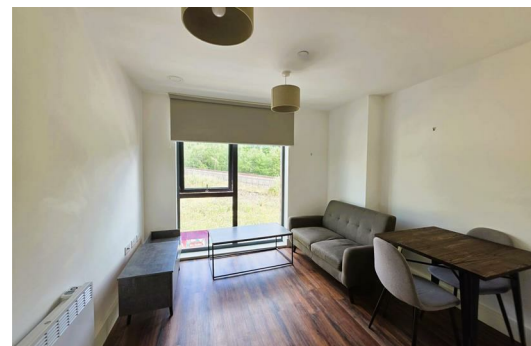
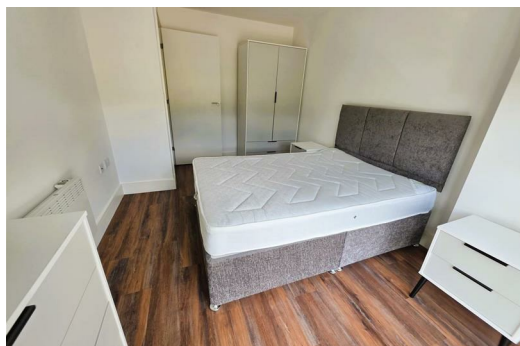
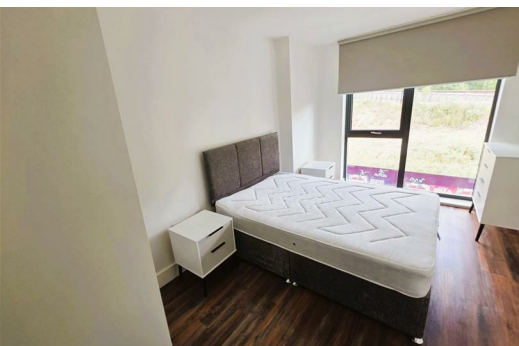
Located within the sought-after 76 Great Central development on Chatham Street, this beautifully presented one-bedroom apartment offers contemporary city living at its finest.

The property boasts a bright and spacious open-plan living and kitchen area, designed with both comfort and functionality in mind. The modern kitchen is fully fitted with high-quality integrated appliances, seamlessly flowing into the living space, making it ideal for both relaxing and entertaining. Floor-to-ceiling windows flood the apartment with natural light, creating an airy and inviting atmosphere throughout.

The well-proportioned double bedroom offers a peaceful retreat, while the contemporary bathroom is finished to a high standard with sleek fittings and a modern design. The apartment is offered fully furnished, allowing for a hassle-free move-in experience.

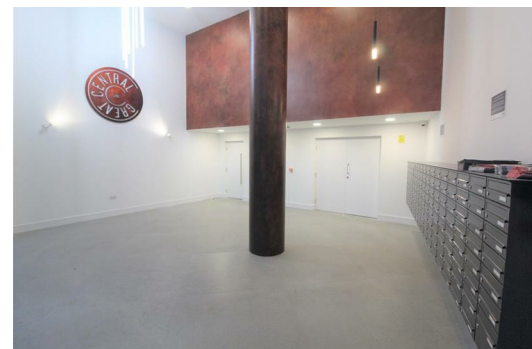
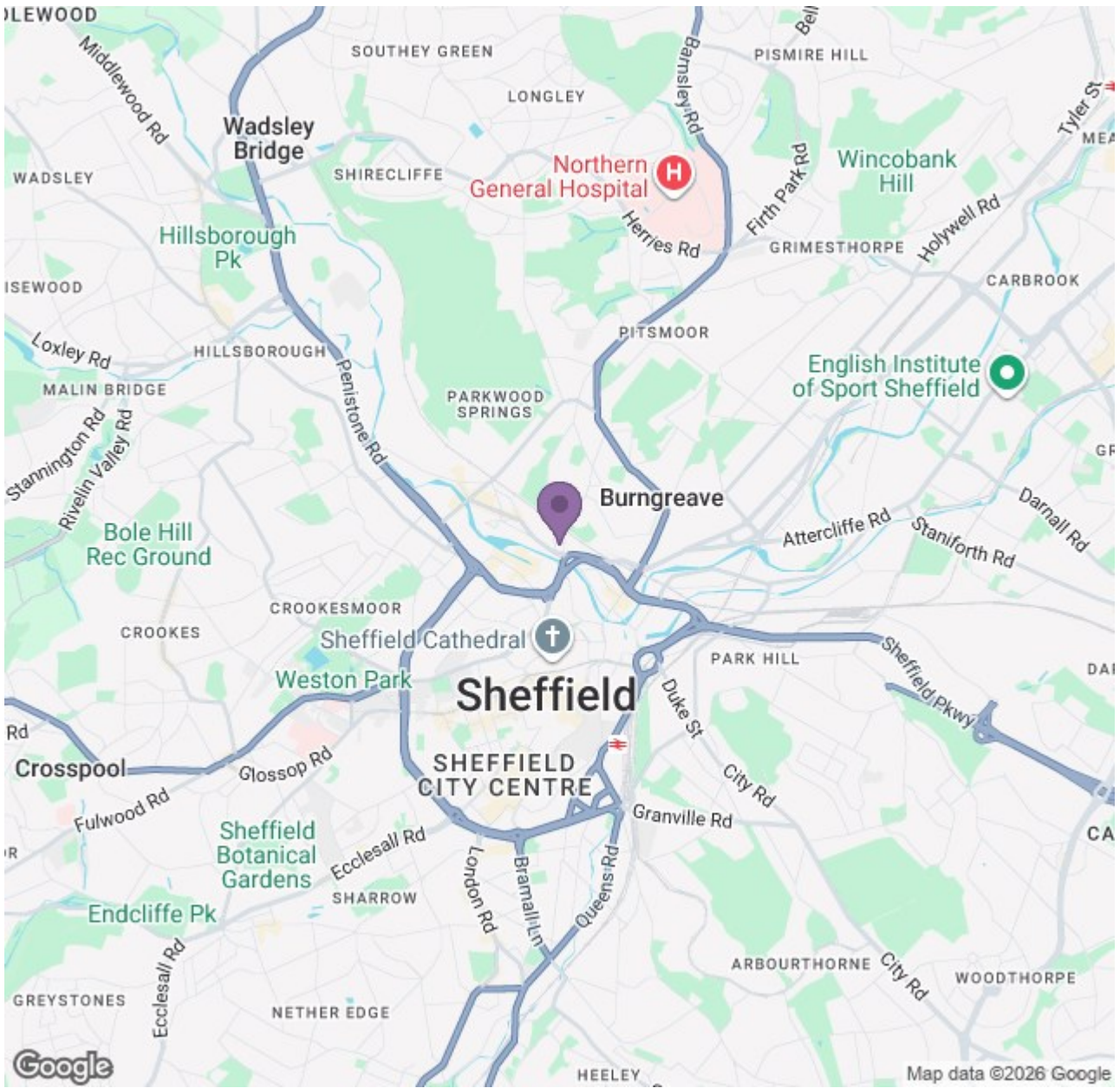
Perfectly positioned in Sheffield S3, this development sits just moments from the city centre, providing easy access to a wide range of amenities. Residents can enjoy nearby shops, cafes, bars, and restaurants, as well as excellent transport links. The property is within walking distance of Kelham Island, one of Sheffield's most vibrant and trendy neighbourhoods, known for its independent eateries, bars, and cultural attractions. Sheffield University and the train station are also conveniently close, making this an ideal base for both professionals and students alike.

This is an excellent opportunity to secure a modern home in a thriving and well-connected area.



Ascend

Built on higher standards



Energy Efficiency Rating		Environmental Impact (CO ₂) Rating	
Current	Target	Current	Target
83	83	B	B
83	83	B	B

Ascend

Built on higher standards