



Connells

Kimble Crescent
Bushey



Property Description

Located on the popular Kimble Crescent in Bushey Heath, this extended three-bedroom semi-detached home offers an excellent opportunity for buyers looking to personalise and add value. The property is ideally positioned close to local amenities, well-regarded schooling and excellent transport links, making it a highly convenient and family-friendly location.

The accommodation comprises three well-proportioned double bedrooms, including a principal bedroom with en-suite, alongside a family bathroom. The home has already been extended, providing generous living space, while still offering scope for modernisation to suit individual tastes.

Externally, the property benefits from a garage and driveway parking, with further potential to extend subject to the necessary planning consents. Offered to the market with no onward chain, this is a fantastic opportunity to secure a home with both immediate space and long-term potential in a desirable Bushey Heath setting.

Ground Floor

Entrance Hall

Door to front aspect.

Lounge

Television point and radiator,

Dining Room

Sliding doors to rear garden and radiator,

Kitchen

Window to rear aspect, door to garden, wall and base units, work surfaces, plumbing for dishwasher/washing machine, space for fridge/freezer, electric oven and hob, cooker-hood, one bowl sink with drainer, and boiler house.

First Floor

Landing

Loft access - the vendor has advised us, that the loft is boarded and insulated.

Bedroom 1

Window to side aspect and radiator.

Ensuite

Window to side aspect, partially tiled, water closet, wash hand basin, shower cubicle, and radiator.

Bedroom 2

Window to front aspect and radiator.

Bedroom 3

Window to rear aspect, built in wardrobes and radiator.

Bathroom

Window to side aspect, partially tiled throughout, wash hand basin, water closet, bath with mixer taps, and heated towel rail.

Outside

Driveway

Garage

Approx. 140ft rear garden

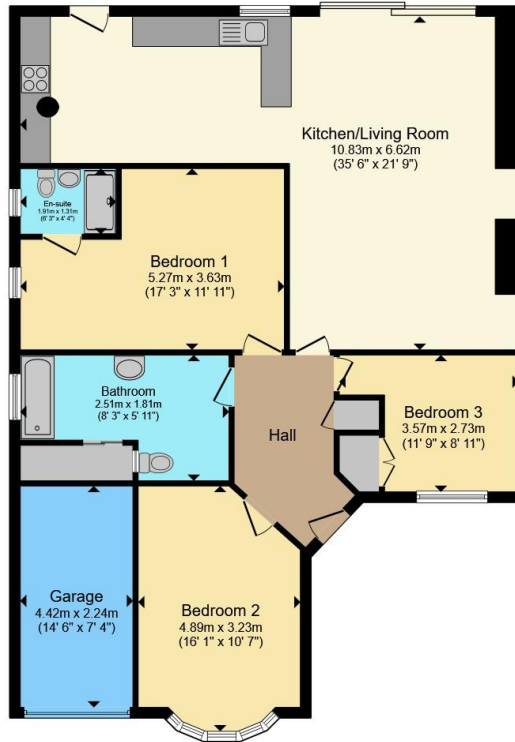
Side access

No Onward Chain









Total floor area 119.3 m² (1,284 sq.ft.) approx

This floor plan is for illustrative purposes only. It is not drawn to scale. Any measurements, floor areas (including any total floor area), openings and orientation are approximate. No details are guaranteed, they cannot be relied upon for any purpose and they do not form part of any agreement. No liability is taken for any error, omission or misstatement. A party must rely upon its own inspection(s). Powered by www.propertybox.io



To view this property please contact Connells on

T 020 8950 4404
E bushey@connells.co.uk

86 High Street
 BUSHEY WD23 3HD

EPC Rating: D Council Tax
 Band: E

Tenure: Freehold

view this property online connells.co.uk/Property/BUS308377



1. MONEY LAUNDERING REGULATIONS Intending purchasers will be asked to produce identification documentation at a later stage and we would ask for your co-operation in order that there will be no delay in agreeing the sale. 2. These particulars do not constitute part or all of an offer or contract. 3. The measurements indicated are supplied for guidance only and as such must be considered incorrect. Potential buyers are advised to recheck measurements before committing to any expense. 4. We have not tested any apparatus, equipment, fixtures, fittings or services and it is in the buyers interest to check the working condition of any appliances.

Connells Residential is registered in England and Wales under company number 1489613, Registered Office is Cumbria House, 16-20 Hockliffe Street, Leighton Buzzard, Bedfordshire, LU7 1GN. VAT Registration Number is 500 2481 05.

See all our properties at www.connells.co.uk | www.rightmove.co.uk | www.zoopla.co.uk

Property Ref: BUS308377 - 0003