

Manor Fields, Horsham, RH13 6SD
£1,900 Per Month
Council Tax Band: D

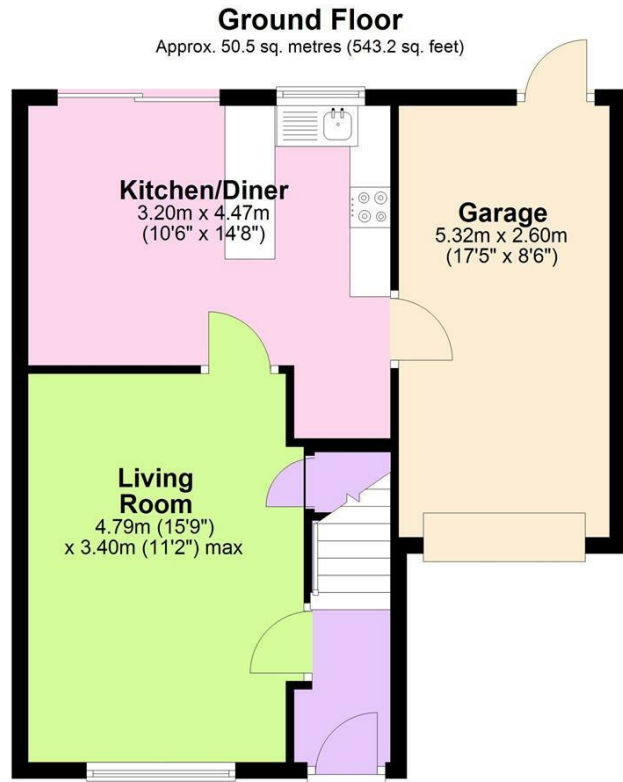


LOCATION

We are delighted to bring to the market this well-proportioned three bedroom semi-detached house in a good location in Horsham. It is within walking distance of both Horsham mainline and Littlehaven stations and is approximately 1.9 miles from Horsham town centre with its wealth of shops, cafes and restaurants. It is also conveniently located just a five minute walk from a parade of shops featuring a post office, CO-OP store, cafe and takeaway outlets. It is also on a bus route and is within walking distance of Leechpool woods.



Open House Horsham



Total area: approx. 86.1 sq. metres (927.1 sq. feet)

131 Manor Fields



Energy Efficiency Rating		
	Current	Potential
Very energy efficient - lower running costs		
(92 plus) A		
(81-91) B		
(69-80) C		
(55-68) D		
(39-54) E		
(21-38) F		
(1-20) G		
Not energy efficient - higher running costs		
	66	87
England & Wales	EU Directive 2002/91/EC	