



The Leef  
Property Group

# ALL SIX HOUSE LIVERPOOL

---

RESIDENTS'  
BROCHURE



[leefproperties.com](https://leefproperties.com)

# A WARM WELCOME

**Welcome to All Six House Liverpool - a vibrant rental community in the heart of the city, offering contemporary homes, exceptional amenities and a professionally managed living experience.**

Thoughtfully designed apartments, dedicated on-site management and carefully curated communal spaces combine to create a place that's as convenient as it is comfortable.

Whether you're relocating, commuting or simply looking for a better way to rent, All Six House has been designed to help you settle in, connect and feel at home from day one.



## The Development at a Glance



141 professionally managed rental apartments in Derby Square, Liverpool - with the best of the city on your doorstep.



A welcoming resident community supported by shared spaces and amenities designed to encourage connection and wellbeing.



Contemporary one and two-bedroom homes finished to a high specification, featuring bright open-plan living spaces and modern interiors.



Stay informed and involved through resident events, regular community updates and digital information screens throughout the building.



Secure, hassle-free living with on-site management, 24-hour CCTV and controlled access throughout the development.



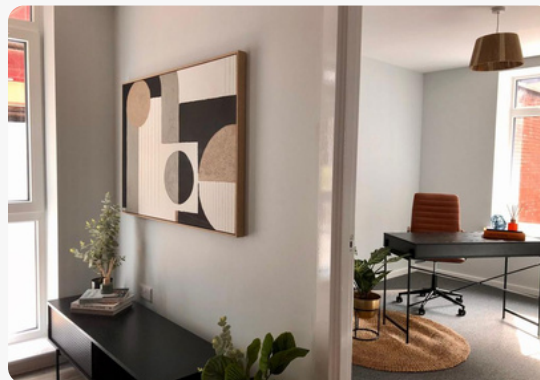
Fast, reliable broadband and a dedicated co-working space provide the flexibility today's renters need to work, create and connect.

# LUXURY APARTMENTS

**Discover the quality, style and considered design that sets this development apart.**

All Six House's one and two bed apartments feature a spacious living area, with open-plan layouts designed for modern living. The fully equipped kitchens benefit from high-quality appliances, ample storage, and sleek finishes.

Generously sized bedrooms include built-in wardrobes while the stylish bathrooms have elegant fixtures and fittings, including rainfall showers.



# THE LOCATION

**Perfectly positioned in Derby Square, All Six House places you at the centre of Liverpool's thriving social, cultural and business scene.**

From independent cafés and award-winning restaurants to world-class shopping and iconic waterfront attractions, everything you need is just moments from your front door.

Whether you're building your career, studying, or looking for a vibrant place to call home, All Six House offers the ideal balance of city-centre convenience and contemporary comfort.

## Live in one of the UK's most exciting cities



From the historic Albert Dock and Liverpool ONE to theatres, galleries and sporting venues, Liverpool is a city packed with experiences.

Living at All Six House means you have some of the region's best attractions are right on your doorstep.

Liverpool Lime Street Station is just a short walk away, making travel across the UK simple and convenient.

Excellent public transport connections also provide easy access throughout the city and surrounding areas, while Liverpool John Lennon Airport is within easy reach for business trips and holidays alike.

The city's major road networks, including the M62 and M57, are easily accessible, offering straightforward connections across the North West and beyond.



# TENANT EXPERIENCE

With more than a decade of rental management expertise behind us, we know what makes a genuinely great renting experience. Leef's team will be on hand from **9am until 5pm every day**, offering concierge support that covers everything from apartment queries and parcel collections to insider recommendations on local amenities.

You'll also have access to our **24/7 maintenance reporting platform**, operating 365 days a year. Our market leading AI portal assists with queries and operates a video call service with qualified technicians on hand to assist at any time of day and night. Your dedicated property manager will be your consistent point of contact throughout your tenancy.

## Development Services

We're here to support with everything you need to get your new home set up from day one. Communal areas are maintained by our professional service team to ensure the highest standards throughout the development.

- Water: £25 per person per calendar month and paid to The Leef Property Group.
- Electricity: Residents are required to set up their own provider.
- Council Tax: Costs are provided on application (dependant on number of beds)
- Broadband: Residents are required to set up their own provider.
- Deliveries: Parcels are directed to Apartment 10 between 9am to 5pm. Post is accessed from secure post boxes in reception.
- Cleaners: Every Tuesday and Thursday weekly
- Waste management: General waste is emptied on Tuesday. Recycling is taken on a Thursday every fortnight.
- Fire testing: Regular tests are carried out and fire action notices are displayed throughout.



Resident parking spaces are also available on request, parking spaces are £125 PCM.

# OUR ALL SIX TEAM

**We can't wait to welcome new tenants to All Six House and to showcase the high standards within the luxury apartments.**

Our dedicated Leef Property Group team is here to help with enquiries and day-to-day support. We aim to respond quickly, communicate clearly and ensure renting with us exceeds your expectations.

E: [allsix@leefproperties.com](mailto:allsix@leefproperties.com)

T: 07377 713024

## How to find us:

All Six House  
Derby Square  
Liverpool  
L2 7NX



**Oliver Carter**  
Head of Build-to-Rent

"I've looked after many of our biggest Build-to-Rent developments over the years, so I've seen first-hand what works and what really matters to residents."

"From your initial viewing, we have streamlined processes that ensures everything is handled efficiently and smoothly, keeping you informed every step of the way. Our office team is highly experienced, and we use the latest technology to help us deliver the best tenants services and support. Expect a smooth, friendly experience right from the start."

"Hey, I'm Ellie. I'll be the friendly face you meet on site. I'm based at All Six House from 9am to 5pm Monday to Friday to assist you."

When I'm not on site, we have on-site weekend security from Friday evening through to Sunday.

"All Six really is a great place to live and there's so much going on. We can't wait for you to join our community."



**Ellie Baxendale**  
Development Manager

**Scan to begin your application**





**Begin your application**



**The Leef  
Property Group**

[leefproperties.com](https://leefproperties.com)

12B Olympic Way,  
Warrington,  
Cheshire,  
WA2 0YL