



Sorbus Road, Turnford, EN10 6GD

*** CHAIN FREE ** TWO BEDROOM SECOND FLOOR flat benefits from a LONG LEASE & a security entry system, EN-SUITE TO MASTER, double glazed windows, LIFT ACCESS to all floors and allocated PARKING SPACE

Key features

- ** CHAIN FREE **
- Two Spacious Bedrooms
- Allocated Parking
- Bathroom Three Piece Suite
- Long Lease
- En-Suite To Master
- Security Entry System
- Double Glazed Windows

Property Information

Tenure

Leasehold

Council Tax

B

EPC Rating

B

Local Authority

Broxbourne Borough Council

Lease Length

110 Years

Annual Service Charge & Ground Rent

SC - £1,700

GR - £225



Paul Wallace Estate Agents
Brookfield Centre
Cheshunt
Hertfordshire
EN8 0NN



01992 781100



cheshunt@paulwallace.co.uk



www.paulwallace.co.uk



Opening Times

Mon - Fri	9 am to 6:30 pm
Sat	9 am to 5:30 pm
Sun	Closed
Bank Hols	Closed

paulwallace
estate agents

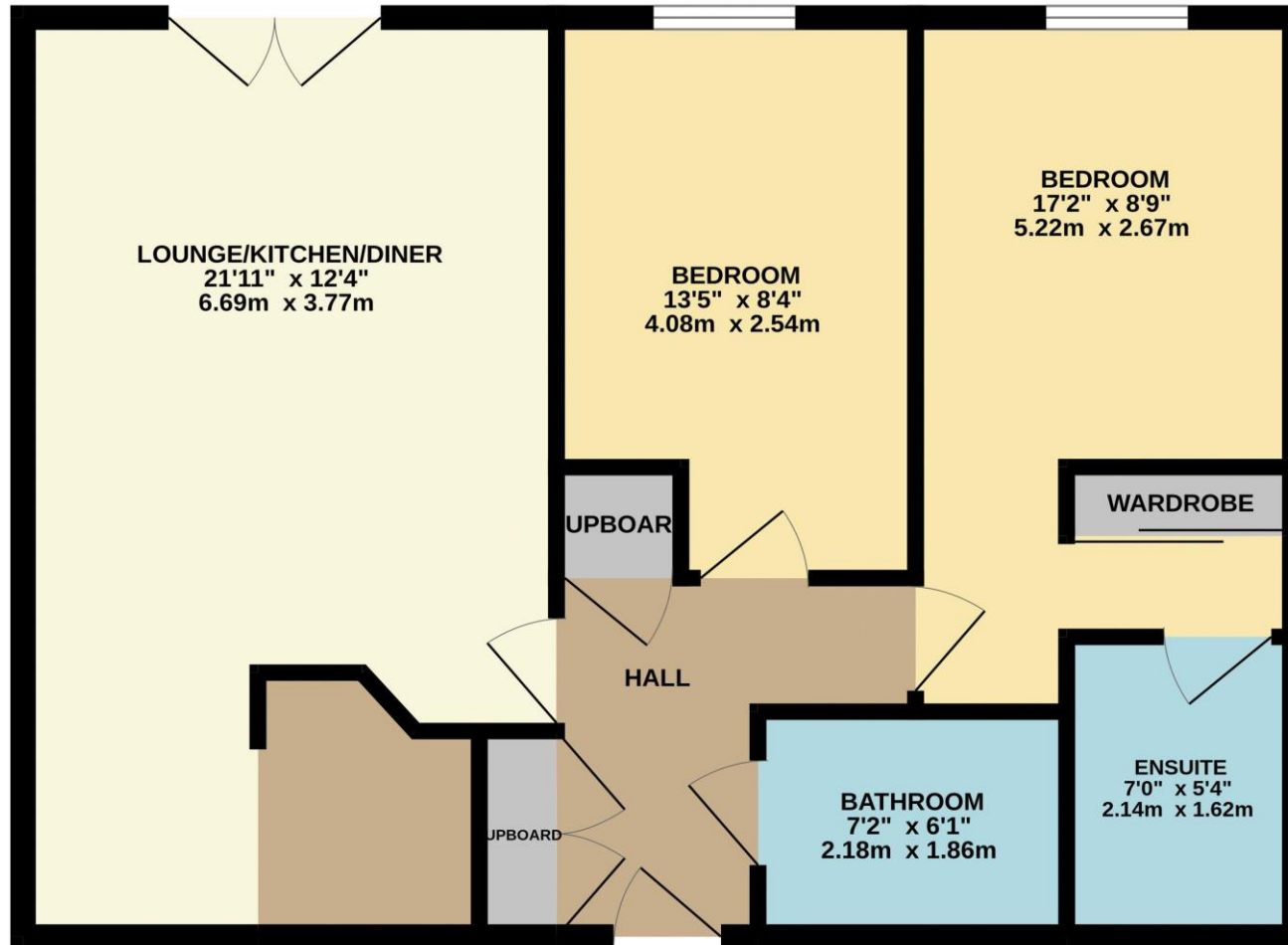
Cheshunts leading estate agent.
Please get in touch for your free
property valuation.







SECOND FLOOR
648 sq.ft. (60.2 sq.m.) approx.



TOTAL FLOOR AREA : 648 sq.ft. (60.2 sq.m.) approx.

Whilst every attempt has been made to ensure the accuracy of the floorplan contained here, measurements of doors, windows, rooms and any other items are approximate and no responsibility is taken for any error, omission or mis-statement. This plan is for illustrative purposes only and should be used as such by any prospective purchaser. The services, systems and appliances shown have not been tested and no guarantee as to their operability or efficiency can be given.

Made with Metropix ©2026





Registered Address: Unit 3 The Brookfield Centre, Cheshunt, Herts, EN8 0NN Company Registration Number: OC414280 | VAT Number: 276958046©2022 Paul Wallace Group LLP trading as Paul Wallace Estate Agents



Paul Wallace Estate Agents
Brookfield Centre
Cheshunt
Hertfordshire
EN8 0NN



01992 781100



cheshunt@paulwallace.co.uk



www.paulwallace.co.uk



Opening Times

Mon - Fri	9 am to 6:30 pm
Sat	9 am to 5:30 pm
Sun	Closed
Bank Hols	Closed



Agents note: Whilst every care has been taken to prepare these sales particulars, they are for guidance purposes only. All measurements are approximate and are for general guidance purposes only and whilst every care has been taken to ensure their accuracy, they should not be relied upon. Potential buyers are advised to recheck measurements.