





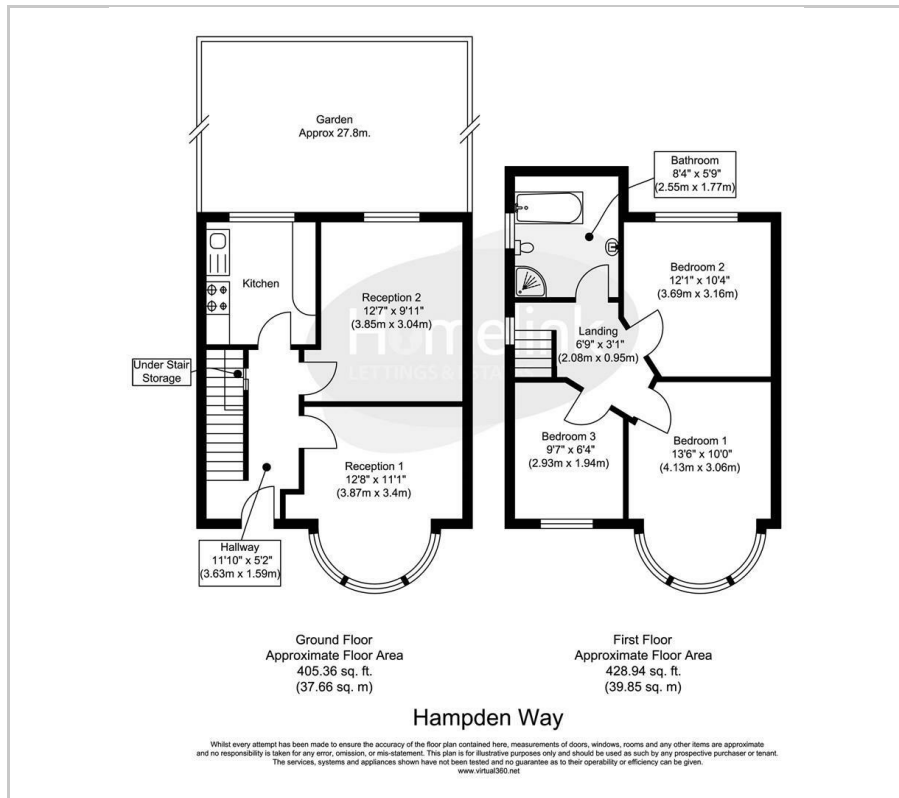


Hampden Way, Southgate, N14

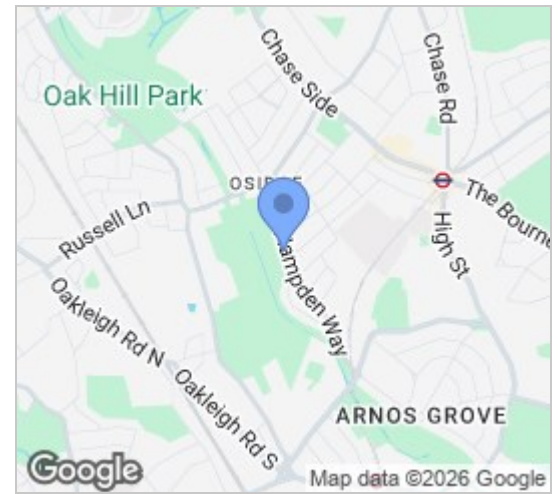
£3,200 PCM

 4  2  2  D

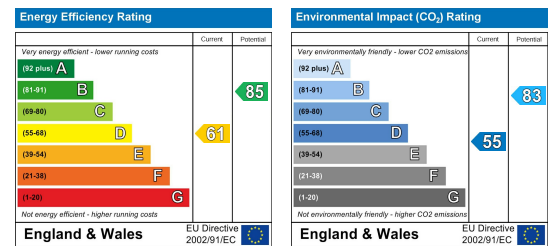
## Floor Plan



## Area Map



## Energy Efficiency Graph



## Viewing

Please contact our Homelink Lettings & Estates Office on 0208 882 2112 if you wish to arrange a viewing appointment for this property or require further information.

- Four bedroom end of terrace
- Arranged over three floors
- En-suite in master bedroom.
- Overlooking park
- Available now
- Newly refurbished throughout
- Two separate receptions
- Large rear garden
- Great family home
- Must be seen

**\*\* NEWLY REFURBISHED THROUGHOUT \*\*** Nestled in the desirable area of Hampden Way, Southgate, N14, this stunning semi-detached house offers a perfect blend of modern living and comfort. Arranged over three spacious floors, the property boasts four well-appointed bedrooms, providing ample space for families or those seeking extra room for guests or a home office.

The heart of the home is a welcoming reception room, ideal for relaxation and entertaining. The newly refurbished interiors showcase contemporary design and high-quality finishes, ensuring a stylish and inviting atmosphere throughout. The property also features a well-equipped bathroom, designed for both functionality and comfort.

One of the standout features of this home is the private rear garden, a tranquil outdoor space perfect for enjoying sunny days or hosting gatherings with family and friends. Additionally, the property offers off-street parking for two vehicles, providing convenience and peace of mind in this bustling area.

With its excellent location, this semi-detached house is not only a beautiful home but also a fantastic opportunity for those looking to settle in a vibrant community. Don't miss the chance to make this exceptional property your own.

Council tax band - E - Barnet council  
Council tax amount - £2,606.51

These particulars, whilst believed to be accurate are set out as a general outline only for guidance and do not constitute any part of an offer or contract. Intending purchasers should not rely on them as statements of representation of fact, but must satisfy themselves by inspection or otherwise as to their accuracy. No person in this firm's employment has the authority to make or give any representation or warranty in respect of the property.



Homelink Lettings and Estates  
62 Chase Side, London N14 5PA  
0208 882 2112 [homelink.co.uk](http://homelink.co.uk)

