



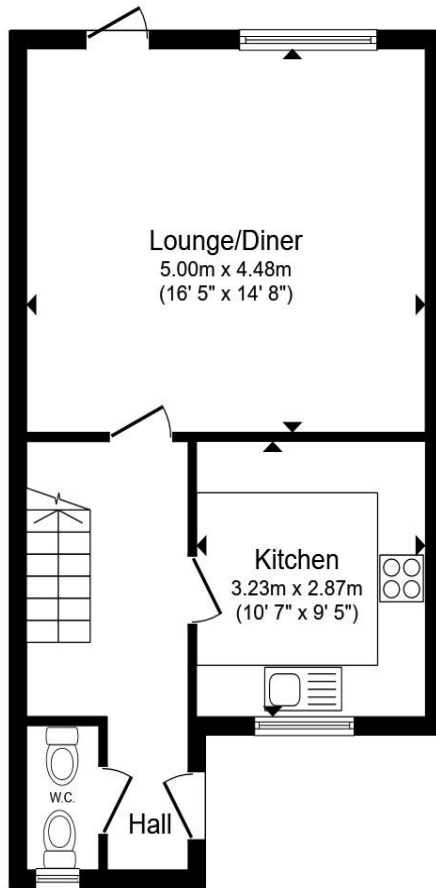
Lime Tree Close, Alderholt, Fordingbridge SP6 3RQ

welcome to

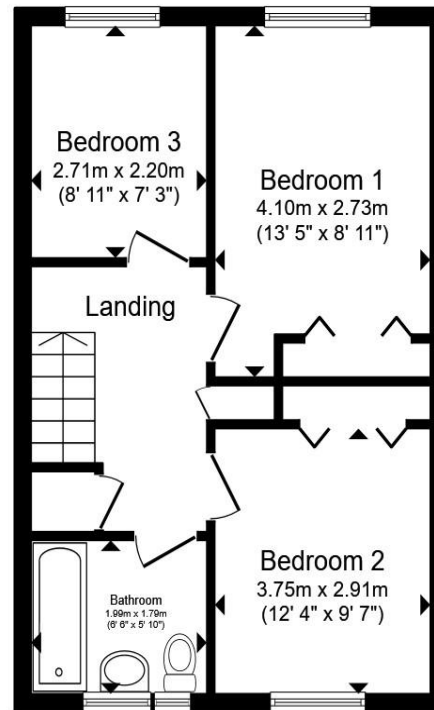
Lime Tree Close, Alderholt, Fordingbridge

A beautifully presented three-bedroom semi-detached home. Perfect for families or professionals looking for a move-in-ready property with thoughtful touches & upgrades throughout. Enjoy a generous garden, driveway parking, and an EV charging point!





Ground Floor



First Floor

Living Room

16' 4" x 14' 8" (4.98m x 4.47m)

Kitchen

10' 6" x 9' 5" (3.20m x 2.87m)

Bedroom 1

8' 11" x 12' 2" (2.72m x 3.71m)

Bedroom 2

9' 6" x 10' 3" (2.90m x 3.12m)

Bedroom 3

7' 2" x 8' 8" (2.18m x 2.64m)

Total floor area 81.6 m² (878 sq.ft.) approx

This floor plan is for illustrative purposes only. It is not drawn to scale. Any measurements, floor areas (including any total floor area), openings and orientation are approximate. No details are guaranteed, they cannot be relied upon for any purpose and they do not form part of any agreement. No liability is taken for any error, omission or misstatement. A party must rely upon its own inspection(s). Powered by www.propertybox.io

welcome to

Lime Tree Close, Alderholt, Fordingbridge

- Three-bedroom semi-detached home in a quiet cul-de-sac
- Driveway parking for multiple vehicles & EV charging point
- Upgraded kitchen with oak worktops, new sink, and range cooker
- Newly fitted bathroom
- Engineered bamboo flooring in lounge and hallway

Tenure: Freehold EPC Rating: D

Council Tax Band: C

£340,000



Please note the marker reflects the postcode not the actual property

view this property online fox-and-sons.co.uk/Property/FDB105398



Property Ref:
FDB105398 - 0003

1. MONEY LAUNDERING REGULATIONS Intending purchasers will be asked to produce identification documentation at a later stage and we would ask for your co-operation in order that there is no delay in agreeing the sale. 2. These particulars do not constitute part or all of an offer or contract. 3. The measurements indicated are supplied for guidance only and as such must be considered incorrect. Potential buyers are advised to recheck measurements before committing to any expense. 4. We have not tested any apparatus, equipment, fixtures or services and it is in the buyers interest to check the working condition of any appliances. 5. Where an EPC, or a Home Report (Scotland only) is held for this property, it is available for inspection at the branch by appointment. If you require a printed version of a Home Report, you will need to pay a reasonable production charge reflecting printing and other costs. 6. We are not able to offer an opinion either written or verbal on the content of these reports and this must be obtained from your legal representative. 7. Whilst we take care in preparing these reports, a buyer should ensure that his/her legal representative confirms as soon as possible all matters relating to title including the extent and boundaries of the property and other important matters before exchange of contracts.


fox & sons



01425 652121



fordingbridge@fox-and-sons.co.uk



8 Salisbury Street, FORDINGBRIDGE,
Hampshire, SP6 1AF



fox-and-sons.co.uk